

Datasheet for ABIN783504  
**anti-AP3S1 antibody (Center)**



[Go to Product page](#)

1 Image

## Overview

Quantity:	0.1 mg
Target:	AP3S1
Binding Specificity:	Center
Reactivity:	Human, Mouse, Rat
Host:	Rabbit
Clonality:	Polyclonal
Conjugate:	This AP3S1 antibody is un-conjugated
Application:	Western Blotting (WB), Enzyme Immunoassay (EIA)

## Product Details

Immunogen:	Raised against a 19 amino acid peptide near the center of human AP3S1
Specificity:	At least three isoforms of AP3S1 are known to exist, this antibody will detect the two larger isoforms. AP3S1 antibody is predicted to not cross-react with other AP3 protein family members.
Cross-Reactivity (Details):	Species reactivity (tested): Human, mouse, rat
Purification:	Affinity chromatography purified via peptide column

## Target Details

Target:	AP3S1
Alternative Name:	AP3 Complex Subunit sigma-1 ( <a href="#">AP3S1 Products</a> )

## Target Details

**Background:** AP3S1 belongs to the adaptor complexes 3 (AP3) small subunit family which is not clathrin-associated. The complex is associated with the Golgi region as well as more peripheral structures. It facilitates the budding of vesicles from the Golgi membrane and may be directly involved in trafficking to lysosomes. AP3 is an heterotetramer composed of two large adaptins (AP3D1, AP3B1 or AP3B2), a medium adaptin (AP3M1 or AP3M2) and a small adaptin (AP3S1 or AP3S2). AP3S1 Interacts with AGAP1 and may play an important role in carcinoma. Synonyms: AP-3 complex sigma-3A subunit, AP3S1, Adapter-related protein complex 3 sigma-1 subunit, CLAPS3, Clathrin-associated assembly/adaptor protein, Sigma 3A Adaptin, Sigma-3A-adaptin, Sigma-adaptin 3a, small 3

**Gene ID:** 1176

**NCBI Accession:** [NP\\_001275](#)

**UniProt:** [Q92572](#)

## Application Details

**Application Notes:** Optimal working dilution should be determined by the investigator.

**Restrictions:** For Research Use only

## Handling

**Buffer:** PBS containing 0.02 % sodium azide

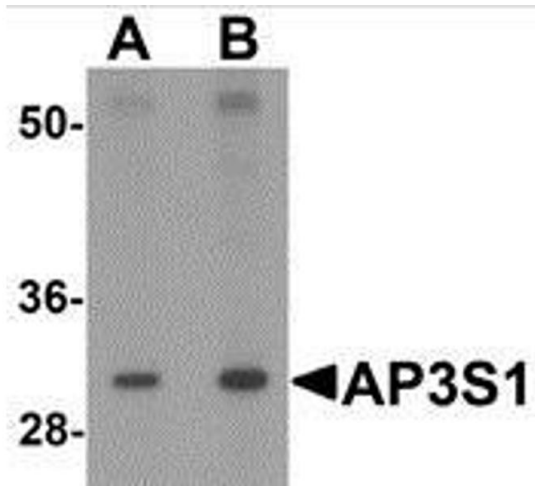
**Preservative:** Sodium azide

**Precaution of Use:** This product contains sodium azide: a POISONOUS AND HAZARDOUS SUBSTANCE which should be handled by trained staff only.

**Handling Advice:** Avoid repeated freezing and thawing.

**Storage:** 4 °C/-20 °C

**Storage Comment:** Store at 2 - 8 °C for up to one month or (in aliquots) at -20 °C for longer.



Western Blotting

**Image 1.** Western blot analysis of AP3S1 in mouse kidney tissue lysate with AP3S1 antibody at (A) 1 and (B) 2  $\mu\text{g/ml}$ .