

Datasheet for ABIN783536  
**anti-SPTLC2 antibody (C-Term)**[Go to Product page](#)

## 2 Images

## Overview

Quantity:	0.1 mg
Target:	SPTLC2
Binding Specificity:	C-Term
Reactivity:	Human, Mouse, Rat
Host:	Rabbit
Clonality:	Polyclonal
Conjugate:	This SPTLC2 antibody is un-conjugated
Application:	Western Blotting (WB), Immunofluorescence (IF), Immunohistochemistry (Paraffin-embedded Sections) (IHC (p)), Enzyme Immunoassay (EIA)

## Product Details

Specificity:	This antibody recognizes Human SPTLC2. At least three isoforms of SPT2 are known to exist, this antibody will not detect isoform b. SPT2 antibody is predicted to not cross-react with SPT1.
Cross-Reactivity (Details):	Species reactivity (tested): Human, Mouse, Rat.
Purification:	Affinity Purified

## Target Details

Target:	SPTLC2
Alternative Name:	SPTLC2 ( <a href="#">SPTLC2 Products</a> )
Background:	SPTLC2 is a long chain base subunit of serine palmitoyltransferase. Serine palmitoyltransferase, which consists of two different subunits, is the key enzyme in sphingolipid

## Target Details

biosynthesis. It catalyzes the pyridoxal-5-prime-phosphate-dependent condensation of L-serine and palmitoyl-CoA to 3-oxosphinganine. Mutations in this gene were identified in patients with hereditary sensory neuropathy type I. This gene encodes a long chain base subunit of serine palmitoyltransferase. Serine palmitoyltransferase, which consists of two different subunits, is the key enzyme in sphingolipid biosynthesis. It catalyzes the pyridoxal-5-prime-phosphate-dependent condensation of L-serine and palmitoyl-CoA to 3-oxosphinganine. Mutations in this gene were identified in patients with hereditary sensory neuropathy type I. Synonyms: KIAA0526, LCB 2, LCB2, LCB2a, Long chain base biosynthesis protein 2, SPT 2, SPT2, Serine palmitoyltransferase 2, Serine-palmitoyl-CoA transferase 2

Gene ID:	9517
NCBI Accession:	<a href="#">NP_004854</a>
UniProt:	<a href="#">O15270</a>

## Application Details

Application Notes:	Optimal working dilution should be determined by the investigator.
Restrictions:	For Research Use only

## Handling

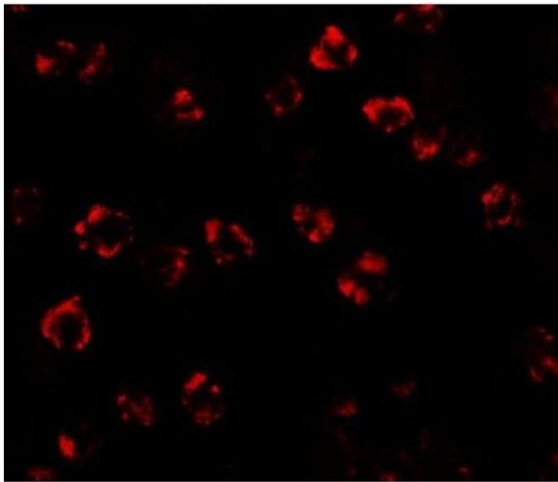
Buffer:	PBS, 0.02 % Sodium Azide
---------	--------------------------

## Images



### Immunofluorescence

**Image 1.** Immunocytochemistry of SPT2 in 3T3 cells with SPT2 Antibody at 10 µg/ml.



#### Immunofluorescence

**Image 2.** Immunofluorescence of SPT2 in 3T3 cells with SPT2 Antibody at 20 µg/ml.