

Datasheet for ABIN783554  
**anti-STEAP4 antibody (Center)**[Go to Product page](#)

## 1 Image

## Overview

Quantity:	0.1 mg
Target:	STEAP4
Binding Specificity:	Center
Reactivity:	Human, Mouse, Rat
Host:	Rabbit
Clonality:	Polyclonal
Conjugate:	This STEAP4 antibody is un-conjugated
Application:	Western Blotting (WB), Enzyme Immunoassay (EIA)

## Product Details

Immunogen:	14 amino acid peptide from near the center of human STEAP4
Specificity:	This antibody detects STEAP4 at Center.
Cross-Reactivity (Details):	Species reactivity (tested): Human, mouse, rat
Purification:	Affinity chromatography purified via peptide column

## Target Details

Target:	STEAP4
Alternative Name:	STEAP4 ( <a href="#">STEAP4 Products</a> )
Background:	The six-transmembrane epithelial antigen of prostate 4 (STEAP4) is a member of a family of metalloredutases identified as cell-surface antigens in prostate tissue. Similar to two other

## Target Details

members of the STEAP family (STEAP 2 and STEAP3), STEAP4 promotes both iron and copper reduction. STEAP4 is highly expressed in placenta, lung, heart and prostate tissues, and overexpressed in prostate cancer cells compared to normal prostate cells. Overexpression of STEAP4 in prostate cells significantly increases cell growth and colony formation, suggesting STEAP4 may have a role in cell proliferation and prostate cancer progression. At least two isoforms are known to exist for this protein. This STEAP4 antibody does not cross-react with other STEAP proteins. Synonyms: Metalloreductase STEAP4, STAMP2, STEAP-4, Six-transmembrane epithelial antigen of prostate 4, SixTransMembrane protein of prostate 2, TNFAIP9, Tumor necrosis factor, alpha-induced protein 9

Gene ID: 79689

NCBI Accession: [NP\\_078912](#)

UniProt: [Q687X5](#)

Pathways: [Transition Metal Ion Homeostasis](#)

## Application Details

Application Notes: Optimal working dilution should be determined by the investigator.

Restrictions: For Research Use only

## Handling

Buffer: PBS containing 0.02 % sodium azide

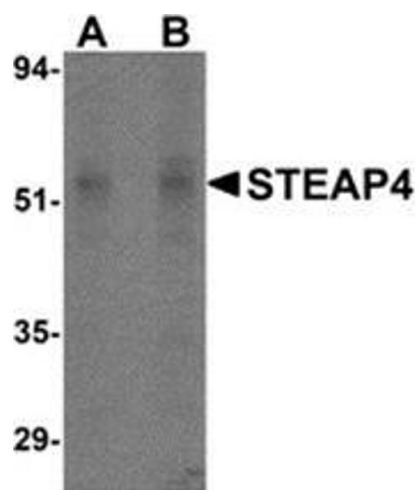
Preservative: Sodium azide

Precaution of Use: This product contains sodium azide: a POISONOUS AND HAZARDOUS SUBSTANCE which should be handled by trained staff only.

Handling Advice: Avoid repeated freezing and thawing.

Storage: 4 °C/-20 °C

Storage Comment: Store at 2 - 8 °C for up to three months or (in aliquots) at -20 °C for longer.



Western Blotting

**Image 1.** Western blot analysis of STEAP4 in rat liver tissue lysate with STEAP4 antibody at (A) 0.5 and (B) 1 µg/ml.