

Datasheet for ABIN783572  
**anti-KLRA1 antibody (Center)**[Go to Product page](#)

## 2 Images

## Overview

Quantity:	0.1 mg
Target:	KLRA1
Binding Specificity:	Center
Reactivity:	Human, Mouse, Rat
Host:	Rabbit
Clonality:	Polyclonal
Conjugate:	This KLRA1 antibody is un-conjugated
Application:	Western Blotting (WB), Immunofluorescence (IF), Enzyme Immunoassay (EIA)

## Product Details

Immunogen:	13 amino acid peptide near the center of human KLRA1
Cross-Reactivity (Details):	Species reactivity (tested): Human, mouse, rat
Purification:	Affinity chromatography purified via peptide column

## Target Details

Target:	KLRA1
Alternative Name:	KLRA1 ( <a href="#">KLRA1 Products</a> )
Background:	KLRA1 (also known as Ly49L) is a member of the LY49 family of receptors in Natural Killer (NK) cells that bind to major histocompatibility complex (MHC) class 1. These proteins are classified as either activating or inhibitory receptors based on whether they possess an immunoreceptor tyrosine-based inhibitory motif (ITIM) in their cytoplasmic region (for inhibitory receptors), or an

## Target Details

immunoreceptor tyrosine-based activation motif (ITAM) that transmits activating signals resulting in phosphorylation of several substrates. KLRA1 is thought to be an activating receptor, inducing DAP12 phosphorylation in response to antibody-mediated cross-linking of KLRA1 on NK cells. At least three isoforms of KLRA1 are known to exist, this antibody recognizes only the long isoform. Synonyms: KLRA-1, Killer cell lectin-like receptor subfamily A, LY49A, LY49L, Lymphocyte antigen 49a, T lymphocyte antigen A1, member 1

Gene ID: 10090

UniProt: [P20937](#)

## Application Details

Application Notes: Optimal working dilution should be determined by the investigator.

Restrictions: For Research Use only

## Handling

Buffer: PBS containing 0.02 % sodium azide

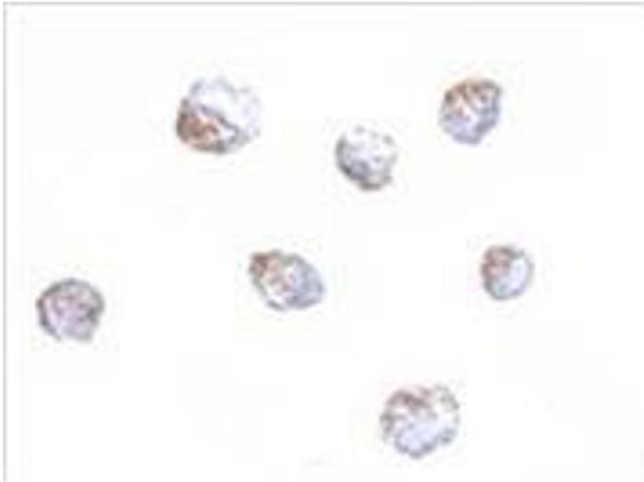
Preservative: Sodium azide

Precaution of Use: This product contains sodium azide: a POISONOUS AND HAZARDOUS SUBSTANCE which should be handled by trained staff only.

Handling Advice: Avoid repeated freezing and thawing.

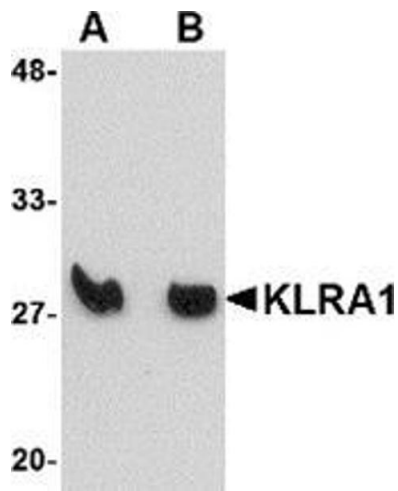
Storage: 4 °C/-20 °C

Storage Comment: Store at 2 - 8 °C for up to three months or (in aliquots) at -20 °C for longer.



Immunofluorescence

**Image 1.** Immunocytochemistry of KLRA1 in 293 cells with KLRA1 antibody at 4 µg/ml.



Western Blotting

**Image 2.** Western blot analysis of KLRA1 in mouse spleen tissue lysate with KLRA1 antibody at (A) 1 µg/ml and (B) 2 µg/ml.