



[Go to Product page](#)

Datasheet for ABIN783631
anti-ZEB1 antibody (Center)

2 Images

Overview

Quantity:	0.1 mg
Target:	ZEB1
Binding Specificity:	Center
Reactivity:	Human
Host:	Rabbit
Clonality:	Polyclonal
Conjugate:	This ZEB1 antibody is un-conjugated
Application:	Western Blotting (WB), Immunofluorescence (IF), Enzyme Immunoassay (EIA)

Product Details

Immunogen:	15 amino acid peptide near the center of human ZEB1
Cross-Reactivity (Details):	Species reactivity (tested):Human
Purification:	Affinity chromatography purified via peptide column

Target Details

Target:	ZEB1
Alternative Name:	ZEB1 (ZEB1 Products)
Background:	ZEB1, initially identified as the delta-crystallin enhancer binding protein delta EF1, is a DNA-binding protein that binds to a modified E-box sequence and has been implicated in postgastrulation embryogenesis. ZEB1 binds to the promoter of several hemapoietic genes, including interleukin-2, CD4, GATA-3, and alpha(4)-integrin, and mice in which ZEB1 has been

Target Details

targeted show thymic atrophy, and severe defects in lymphocyte differentiation. Recent evidence suggests that ZEB1 also regulates the accumulation of adipose tissue and may play a role in obesity. Mutations in this gene have been associated with late-onset Fuchs endothelial corneal dystrophy. Synonyms: AREB6, NIL-2-A, NIL-2-A zinc finger protein, Negative regulator of IL2, TCF-8, TCF8, Transcription factor 8, Zinc finger E-box-binding homeobox 1

Gene ID: 6935

NCBI Accession: [NP_001121600](#)

UniProt: [P37275](#)

Pathways: [Regulation of Muscle Cell Differentiation](#)

Application Details

Application Notes: Optimal working dilution should be determined by the investigator.

Restrictions: For Research Use only

Handling

Concentration: 1.0 mg/mL

Buffer: PBS containing 0.02 % sodium azide

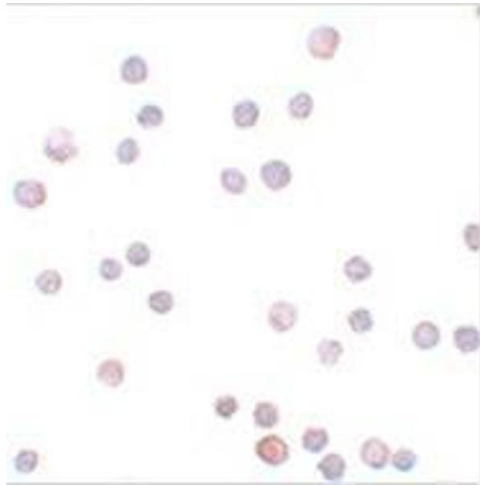
Preservative: Sodium azide

Precaution of Use: This product contains sodium azide: a POISONOUS AND HAZARDOUS SUBSTANCE which should be handled by trained staff only.

Handling Advice: Avoid repeated freezing and thawing.

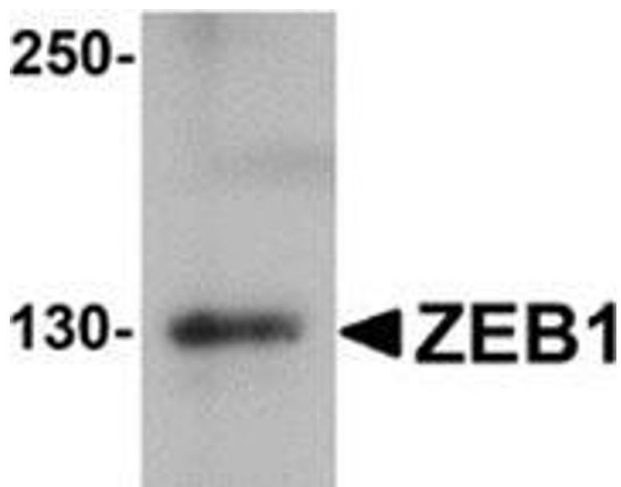
Storage: -20 °C

Storage Comment: Store the antibody (in aliquots) at -20 °C.



Immunofluorescence

Image 1. Immunocytochemistry of ZEB1 in HeLa cells with ZEB1 antibody at 20 µg/ml.



Western Blotting

Image 2. Western blot analysis of ZEB1 in HeLa cell lysate with ZEB1 antibody at 1 µg/ml.