

Datasheet for ABIN783636  
**anti-FREM2 antibody (Center)**[Go to Product page](#)

## 2 Images

## Overview

Quantity:	0.1 mg
Target:	FREM2
Binding Specificity:	Center
Reactivity:	Human, Mouse
Host:	Rabbit
Clonality:	Polyclonal
Conjugate:	This FREM2 antibody is un-conjugated
Application:	Western Blotting (WB), Immunofluorescence (IF), Enzyme Immunoassay (EIA)

## Product Details

Immunogen:	19 amino acid peptide near the center of Human FREM2
Specificity:	This antibody reacts with Human and Mouse FREM2 and is predicted to not cross-react with other FRAS members. This antibody recognizes both isoforms of FREM2.
Purification:	Affinity chromatography purified via peptide column

## Target Details

Target:	FREM2
Alternative Name:	FREM2 ( <a href="#">FREM2 Products</a> )
Background:	FREM2 is a member of the FRAS1-related extracellular matrix protein family and like FREM1, mutations in the FREM2 gene are associated with Fraser syndrome. FREM2 localizes to the basement membrane, forming a ternary complex that plays a role in epidermal-dermal

## Target Details

interactions during morphogenetic processes and is thought to be required for maintaining the integrity of the skin epithelium and the differentiated state of renal epithelia. The FREM2 gene is one of several genes whose transcription is affected by TFAP2C, a transcription factor involved in mammary development, differentiation, and oncogenesis. Synonyms: ECM3 homolog, FRAS1-related extracellular matrix protein 2

Gene ID: 341640

NCBI Accession: [NP\\_997244](#)

UniProt: [Q5SZK8](#)

## Application Details

Application Notes: Optimal working dilution should be determined by the investigator.

Restrictions: For Research Use only

## Handling

Concentration: 1.0 mg/mL

Buffer: PBS, 0.02 % Sodium Azide

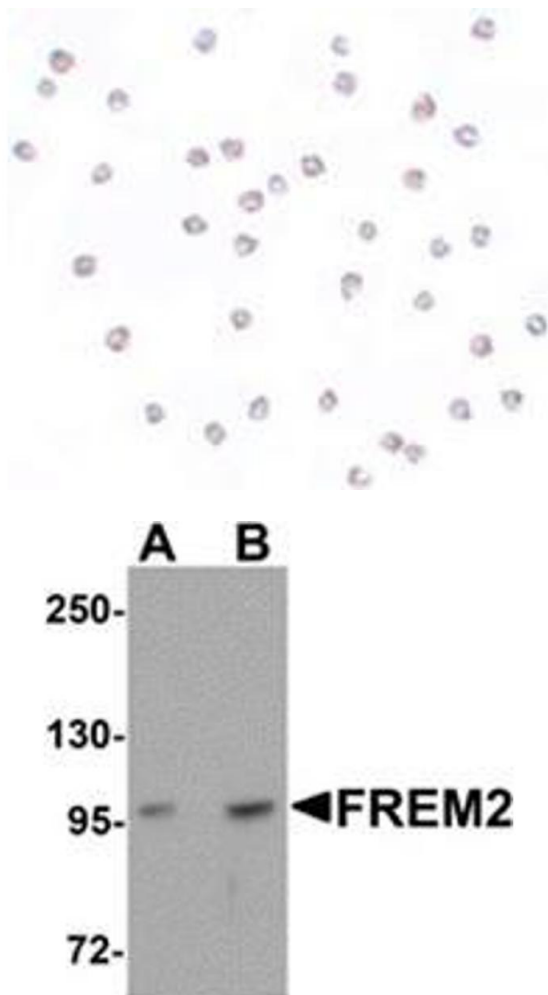
Preservative: Sodium azide

Precaution of Use: This product contains sodium azide: a POISONOUS AND HAZARDOUS SUBSTANCE which should be handled by trained staff only.

Handling Advice: Avoid repeated freezing and thawing.

Storage: 4 °C/-20 °C

Storage Comment: Store undiluted at 2-8 °C for one month or (in aliquots) at -20 °C for longer.



#### Immunofluorescence

**Image 1.** Immunocytochemistry of FREM2 in A-20 cells with FREM2 antibody at 20 µg/ml.

#### Western Blotting

**Image 2.** Western blot analysis of FREM2 in A-20 cell lysate with FREM2 antibody at (A) 0.5 and (B) 1 µg/ml.