

Datasheet for ABIN783647  
**anti-IFITM1 antibody (Center)**[Go to Product page](#)

## 2 Images

## Overview

Quantity:	0.1 mg
Target:	IFITM1
Binding Specificity:	Center
Reactivity:	Human, Mouse, Rat
Host:	Rabbit
Clonality:	Polyclonal
Conjugate:	This IFITM1 antibody is un-conjugated
Application:	Western Blotting (WB), Immunofluorescence (IF), Enzyme Immunoassay (EIA)

## Product Details

Immunogen:	16 amino acid peptide near the center of human IFITM1
Cross-Reactivity (Details):	Species reactivity (tested): Human, Mouse, Rat.
Purification:	Affinity chromatography purified via peptide column

## Target Details

Target:	IFITM1
Alternative Name:	CD225 / IFITM1 ( <a href="#">IFITM1 Products</a> )
Background:	IFITM1 (Interferon inducible transmembrane protein 1) is a member of the IFN-inducible transmembrane protein family. It is an essential mediator of interferon-g-induced antiproliferation and plays a role in the control of cell growth. IFITM1 is upregulated in several tumor types and may be useful as a tumor biomarker. Both mouse IFITM1 and IFITM3 are

## Target Details

expressed on the cell surfaces of primordial germ cells in a developmentally-regulated manner. IFITM1 activity is required for primordial germ cell transit, and IFITM1 acts as a repulsive molecule by repelling non-IFITM1-expressing primordial germ cells from the mesoderm into the endoderm. Synonyms: IFI17, Interferon-induced protein 17, Interferon-induced transmembrane protein 1, Interferon-inducible protein 9-27, Leu-13 antigen

Gene ID: 8519

NCBI Accession: [NP\\_003632](#)

UniProt: [P13164](#)

## Application Details

Application Notes: Optimal working dilution should be determined by the investigator.

Restrictions: For Research Use only

## Handling

Concentration: 1.0 mg/mL

Buffer: PBS containing 0.02 % sodium azide

Preservative: Sodium azide

Precaution of Use: This product contains sodium azide: a POISONOUS AND HAZARDOUS SUBSTANCE which should be handled by trained staff only.

Handling Advice: Avoid repeated freezing and thawing.

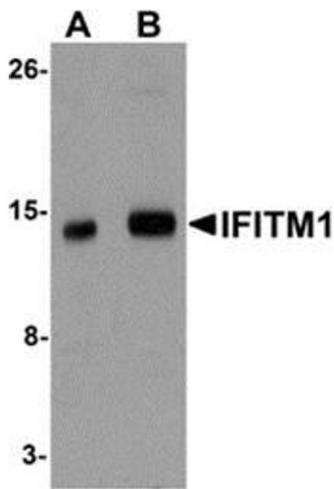
Storage: -20 °C

Storage Comment: Store the antibody (in aliquots) at -20 °C.



Immunofluorescence

**Image 1.** Immunocytochemistry of IFITM1 in Jurkat cells with IFITM1 antibody at 20 µg/ml.



Western Blotting

**Image 2.** Western blot analysis of IFITM1 in 3T3 cell lysate with IFITM1 antibody at (A) 1 and (B) 2 µg/ml.