

Datasheet for ABIN783649  
**anti-SCUBE1 antibody (Center)**[Go to Product page](#)

## 2 Images

## Overview

|                      |  |
|----------------------|--|
| Quantity:            | 0.1 mg   |
| Target:              | SCUBE1   |
| Binding Specificity: | Center   |
| Reactivity:          | Human  |
| Host:                | Rabbit   |
| Clonality:           | Polyclonal   |
| Conjugate:           | This SCUBE1 antibody is un-conjugated                                    |
| Application:         | Western Blotting (WB), Immunofluorescence (IF), Enzyme Immunoassay (EIA) |

## Product Details

|                             |   |
|-----------------------------|---|
| Immunogen:                  | 14 amino acid peptide near the center of human SCUBE1 |
| Cross-Reactivity (Details): | Species reactivity (tested):Human                     |
| Purification:               | Affinity chromatography purified via peptide column   |

## Target Details

|                   |  |
|-------------------|--|
| Target:           | SCUBE1   |
| Alternative Name: | SCUBE1 ( <a href="#">SCUBE1 Products</a> )   |
| Background:       | SCUBE1 is an EGF-related protein with a CUB (C1s-like) domain that is expressed primarily in the developing gonad, nervous system, somites, surface ectoderm and limb buds. The N-terminal EGF-like repeats of SCUBE1 participate in the formation of adhesions in a Ca <sup>2+</sup> -dependent fashion. In contrast, the C-terminal cysteine-rich motifs and CUB domain can directly |

## Target Details

bind and antagonize bone morphogenic protein activity, genetic ablation of this region resulted in brain malformation in mice embryos, suggesting SCUBE1 plays a role in brain morphogenesis. SCUBE1 has also been implicated in early craniofacial development in mice. Synonyms: Signal peptide CUB and EGF-like domain-containing protein 1

Gene ID: 80274

NCBI Accession: [NP\\_766638](#)

UniProt: [Q8IWY4](#)

## Application Details

Application Notes: Optimal working dilution should be determined by the investigator.

Restrictions: For Research Use only

## Handling

Concentration: 1.0 mg/mL

Buffer: 14 amino acid peptide near the center of human SCUBE1

Handling Advice: Avoid repeated freezing and thawing.

Storage: -20 °C

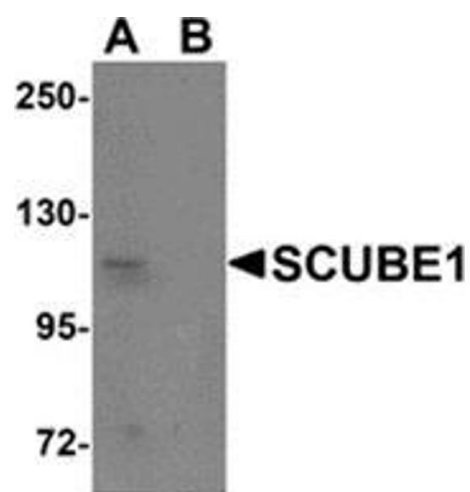
Storage Comment: Store the antibody (in aliquots) at -20 °C.

## Images



### Immunofluorescence

**Image 1.** Immunocytochemistry of SCUBE1 in Daudi cells with SCUBE1 antibody at 20 µg/ml.



Western Blotting

**Image 2.** Western blot analysis of SCUBE1 in Daudi cell lysate with SCUBE1 antibody at 1 µg/ml in (A) the absence and (B) the presence of blocking peptide.