

Datasheet for ABIN783655
anti-SCRN2 antibody (C-Term)[Go to Product page](#)

2 Images

Overview

Quantity:	0.1 mg
Target:	SCRN2
Binding Specificity:	C-Term
Reactivity:	Human, Mouse, Rat
Host:	Rabbit
Clonality:	Polyclonal
Conjugate:	This SCRN2 antibody is un-conjugated
Application:	Western Blotting (WB), Immunofluorescence (IF), Immunohistochemistry (Paraffin-embedded Sections) (IHC (p)), Enzyme Immunoassay (EIA)

Product Details

Immunogen:	18 amino acid peptide near the carboxy terminus of Human SCRN2. Epitope: C-Terminus
Purification:	Immunoaffinity Chromatography

Target Details

Target:	SCRN2
Alternative Name:	Secernin-2 (SCRN2) (SCRN2 Products)
Background:	SCRN2 is a member of the secernin family of proteins which includes the homologous SCRN1, a protein that was first identified as being involved in the regulation of exocytosis from peritoneal mast cells. Little is known of SCRN2, but studies have shown that SCRN1 may possess epitopes that function as tumor-associated antigens in gastric cancers and increased

Target Details

SCRN1 expression in patients with colorectal cancer correlated with poor prognosis, suggesting that SCRN2 may also be involved in protein secretion or the regulation of cell growth.

Gene ID: 90507

NCBI Accession: [NP_612364](#)

UniProt: [Q96FV2](#)

Application Details

Application Notes: Optimal working dilution should be determined by the investigator.

Restrictions: For Research Use only

Handling

Concentration: 1.0 mg/mL

Buffer: PBS containing 0.02 % Sodium Azide as preservative

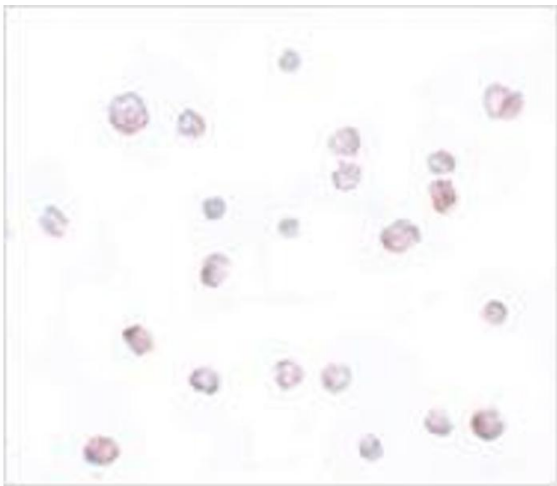
Preservative: Sodium azide

Precaution of Use: This product contains sodium azide: a POISONOUS AND HAZARDOUS SUBSTANCE which should be handled by trained staff only.

Handling Advice: Avoid repeated freezing and thawing.

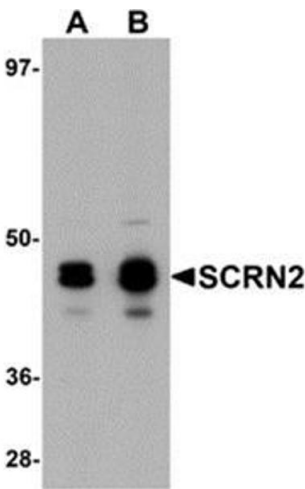
Storage: -20 °C

Storage Comment: Store the antibody (in aliquots) at -20 °C.



Immunofluorescence

Image 1. Immunocytochemistry of SCR N2 in 293 cells with SCR N2 antibody at 20 µg/ml.



Western Blotting

Image 2. Western blot analysis of SCR N2 in 293 cell tissue lysate with SCR N2 antibody at (A) 0.5 and (B) 1 µg/ml.