

Datasheet for ABIN783671
anti-CCDC106 antibody (C-Term)[Go to Product page](#)

2 Images

Overview

Quantity:	0.1 mg
Target:	CCDC106
Binding Specificity:	C-Term
Reactivity:	Human, Mouse, Rat
Host:	Rabbit
Clonality:	Polyclonal
Conjugate:	This CCDC106 antibody is un-conjugated
Application:	Western Blotting (WB), Immunofluorescence (IF), Enzyme Immunoassay (EIA)

Product Details

Immunogen:	15 amino acid peptide near the carboxy terminus of human CCDC106
Cross-Reactivity (Details):	Species reactivity (tested): Human, mouse, rat
Purification:	Affinity chromatography purified via peptide column

Target Details

Target:	CCDC106
Alternative Name:	CCDC106 (CCDC106 Products)
Background:	The coiled-coil domain is a common protein motif that is often involved in protein oligomerization and is found in proteins such as transcription factors and intermediate filaments. CCDC106 was initially identified as a p53-interacting protein by yeast two-hybrid screening. Other experiments demonstrated that CCDC106 co-localizes and interacts with p53

Target Details

in the nucleus, inhibiting the transcriptional activity of p53 and stimulating p53 protein degradation, indicating that at least one of the functions of CCDC106 is acting as a negative regulator of p53. Synonyms: Coiled-coil domain-containing protein 106

Gene ID: 29903

NCBI Accession: [NP_037433](#)

UniProt: [Q9BWC9](#)

Application Details

Application Notes: Optimal working dilution should be determined by the investigator.

Restrictions: For Research Use only

Handling

Concentration: 1.0 mg/mL

Buffer: PBS containing 0.02 % sodium azide

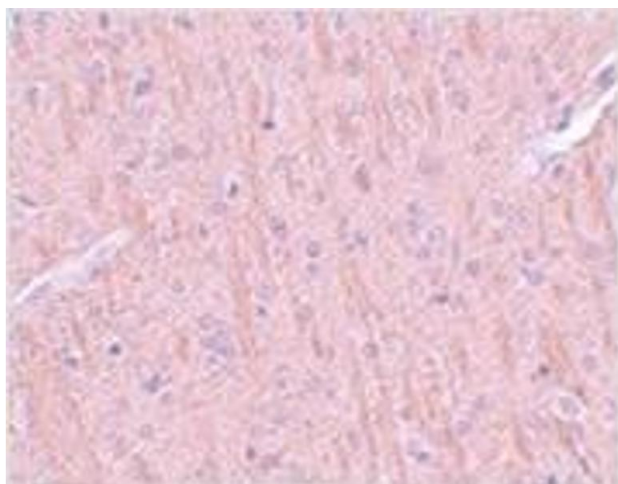
Preservative: Sodium azide

Precaution of Use: This product contains sodium azide: a POISONOUS AND HAZARDOUS SUBSTANCE which should be handled by trained staff only.

Handling Advice: Avoid repeated freezing and thawing.

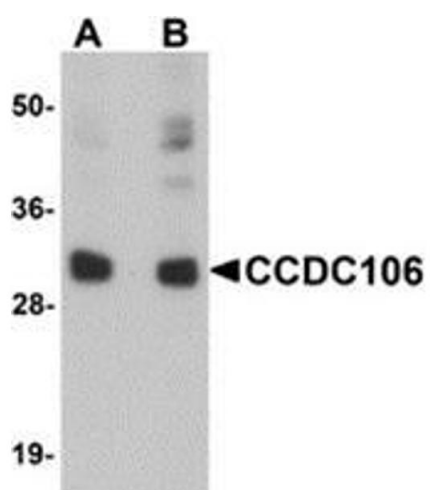
Storage: -20 °C

Storage Comment: Store the antibody (in aliquots) at -20 °C.



Immunohistochemistry (Paraffin-embedded Sections)

Image 1. Immunohistochemistry of CCDC106 in rat brain tissue with CCDC106 antibody at 5 µg/ml.



Western Blotting

Image 2. Western blot analysis of CCDC106 in human brain tissue lysate with CCDC106 antibody at (A) 0.5 and (B) 1 µg/ml.