

Datasheet for ABIN783679
anti-CRISP2 antibody (N-Term)[Go to Product page](#)

1 Image

Overview

Quantity:	0.1 mg
Target:	CRISP2
Binding Specificity:	N-Term
Reactivity:	Human
Host:	Rabbit
Clonality:	Polyclonal
Conjugate:	This CRISP2 antibody is un-conjugated
Application:	Western Blotting (WB), Enzyme Immunoassay (EIA)

Product Details

Immunogen:	15 amino acid peptide near the amino terminus of human CRISP2
Specificity:	This antibody detects CRISP2 at N-term.
Cross-Reactivity (Details):	Species reactivity (tested):Human
Purification:	Affinity chromatography purified via peptide column

Target Details

Target:	CRISP2
Alternative Name:	CRISP2 (CRISP2 Products)
Background:	The cysteine-rich secretory proteins (CRISP) family is a group of four proteins that are strongly expressed in the male reproductive tract and have been implicated in having roles in male

Target Details

fertility. CRISP2, also known as TPX1, has been implicated in the adhesion between spermatids and Sertoli cells, and with CRISP1, is thought to be involved in sperm-egg fusion. CRISP2 has been shown to regulate the Ca²⁺ influx through ryanodine receptors (RYR) and may influence the acrosome reaction or sperm motility. CRISP2 has also been shown to bind to the mitogen-activated protein kinase kinase kinase 11 (MAP3K11) and localizes to the developing acrosome, suggesting this CRISP2-MAP3K11 complex may have a role in acrosome development. Synonyms: CRISP-2, CT36, Cancer/testis antigen 36, Cysteine-rich secretory protein 2, GAPDL5, TPX1, Testis-specific protein TPX-1

Gene ID: 7180

NCBI Accession: [NP_001135879](#)

UniProt: [P16562](#)

Application Details

Application Notes: Optimal working dilution should be determined by the investigator.

Restrictions: For Research Use only

Handling

Buffer: PBS containing 0.02 % sodium azide

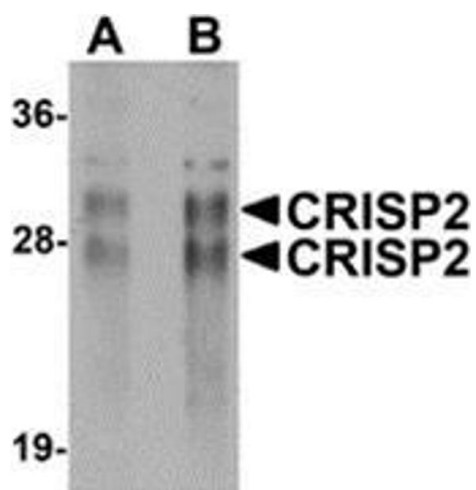
Preservative: Sodium azide

Precaution of Use: This product contains sodium azide: a POISONOUS AND HAZARDOUS SUBSTANCE which should be handled by trained staff only.

Handling Advice: Avoid repeated freezing and thawing.

Storage: 4 °C/-20 °C

Storage Comment: Store at 2 - 8 °C for up to three months or (in aliquots) at -20 °C for longer.



Western Blotting

Image 1. Western blot analysis of CRISP2 in human testis tissue lysate with CRISP2 antibody at (A) 0.5 and (B) 1 μ g/ml.