



[Go to Product page](#)

Datasheet for ABIN783697
anti-NLRC3 antibody (Center)

1 Image

Overview

Quantity:	0.1 mg
Target:	NLRC3
Binding Specificity:	Center
Reactivity:	Human, Mouse, Rat
Host:	Rabbit
Clonality:	Polyclonal
Conjugate:	This NLRC3 antibody is un-conjugated
Application:	Western Blotting (WB), Enzyme Immunoassay (EIA)

Product Details

Immunogen:	18 amino acid peptide near the center of human NOD3
Specificity:	This antibody detects NOD3 at Center.
Cross-Reactivity (Details):	Species reactivity (tested):Human, mouse, rat
Purification:	Affinity chromatography purified via peptide column

Target Details

Target:	NLRC3
Alternative Name:	NOD3 (NLRC3 Products)
Background:	NOD3 is a member of the NOD (nucleotide-binding oligomerization domain) family, a group of proteins that are involved in innate immune defense. NOD3 also known as NLR family CARD

Target Details

containing 3 (NLRC3), is predominantly expressed in the immune system, particularly in T lymphocytes, and its expression is strongly down-regulated following stimulation of the T-cell receptor complex and CD28, suggesting that NOD3 plays a role in attenuating the activation of T cells. NOD3 inhibits NF- κ B, AP-1 and NFAT transcriptional activation in Jurkat T cells downstream of CD3/CD28 stimulation or treatment with PMA/ionomycin and decreases IL-2 and CD25 mRNA induction in activated cells. Synonyms: CLR16.2, FLJ00348, NLRC3, NOD3

Gene ID: 197358

NCBI Accession: [NP_849172](#)

UniProt: [Q7RTR2](#)

Application Details

Application Notes: Optimal working dilution should be determined by the investigator.

Restrictions: For Research Use only

Handling

Buffer: PBS containing 0.02 % sodium azide

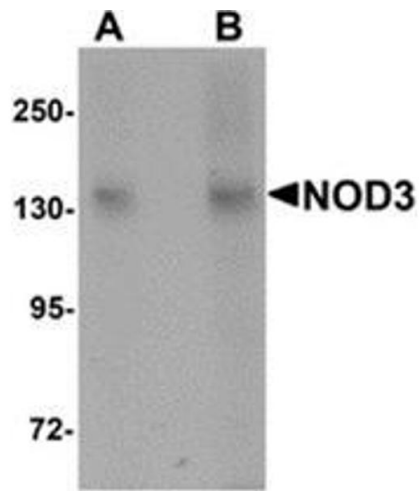
Preservative: Sodium azide

Precaution of Use: This product contains sodium azide: a POISONOUS AND HAZARDOUS SUBSTANCE which should be handled by trained staff only.

Handling Advice: Avoid repeated freezing and thawing.

Storage: 4 °C/-20 °C

Storage Comment: Store at 2 - 8 °C for up to three months or (in aliquots) at -20 °C for longer.



Western Blotting

Image 1. Western blot analysis of NOD3 in 3T3 cell lysate with NOD3 antibody at (A) 1 and (B) 2 $\mu\text{g/ml}$.