

Datasheet for ABIN783713  
**anti-NALP8 antibody (N-Term)**[Go to Product page](#)

## 1 Image

## Overview

Quantity:	0.1 mg
Target:	NALP8 (NLRP8)
Binding Specificity:	N-Term
Reactivity:	Human
Host:	Rabbit
Clonality:	Polyclonal
Conjugate:	This NALP8 antibody is un-conjugated
Application:	Western Blotting (WB), Immunohistochemistry (Paraffin-embedded Sections) (IHC (p)), Enzyme Immunoassay (EIA)

## Product Details

Immunogen:	16 amino acid peptide near the amino terminus of Human NALP8
Specificity:	This antibody detects NALP8 at N-term. This antibody is predicted to not cross-react with other NALP family members.
Cross-Reactivity (Details):	Species reactivity (tested):Human.
Purification:	Affinity Chromatography purified via peptide column

## Target Details

Target:	NALP8 (NLRP8)
Alternative Name:	NALP8 ( <a href="#">NLRP8 Products</a> )

## Target Details

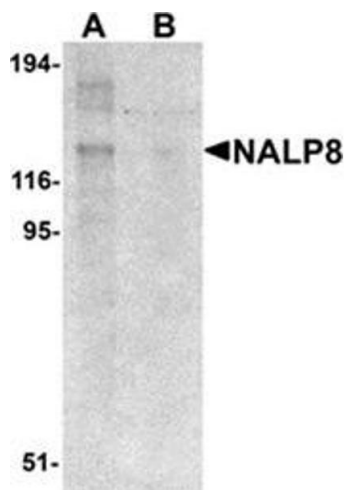
Background:	NALP proteins are cytoplasmic proteins that form a subfamily within the larger CATERPILLER family and are thought to play a crucial role in cell proliferation and reproduction. Like all other NALP family members, NALP8 has a C-terminal leucine-rich repeat (LRR) region, an N-terminal Pyrin domain (PYD) followed by a NACHT domain, and a NACHT-associated domain. It maps to chromosome 19q13.42 and is thought to be expressed in testis and ovary, suggesting that NALP8 may be involved in reproduction. Surprisingly, NALP8 seems to be universal in mammals except for rodents, suggesting that the gene may have been lost during evolution.Synonyms: LRR and PYD domains-containing protein 8, NACHT, NLRP8, NOD16, PAN4, PYRIN and NACHT-containing protein 4
Gene ID:	126205
NCBI Accession:	<a href="#">NP_789781</a>
UniProt:	<a href="#">Q86W28</a>
Pathways:	<a href="#">Inflammasome</a>

## Application Details

Application Notes:	Optimal working dilution should be determined by the investigator.
Restrictions:	For Research Use only

## Handling

Concentration:	1.0 mg/mL
Buffer:	PBS containing 0.02 % Sodium Azide as preservative
Preservative:	Sodium azide
Precaution of Use:	This product contains sodium azide: a POISONOUS AND HAZARDOUS SUBSTANCE which should be handled by trained staff only.
Handling Advice:	Avoid repeated freezing and thawing.
Storage:	4 °C/-20 °C
Storage Comment:	Store the antibody undiluted at 2-8 °C for one month or (in aliquots) at -20 °C for longer.



Western Blotting

**Image 1.** Western blot analysis of NALP8 in human colon tissue lysate with NALP8 antibody at 1 µg/ml in (A) the absence and (B) the presence of blocking peptide.