



[Go to Product page](#)

Datasheet for ABIN783717

anti-NLRP11 antibody (C-Term)

1 Image

Overview

Quantity:	0.1 mg
Target:	NLRP11
Binding Specificity:	C-Term
Reactivity:	Human
Host:	Rabbit
Clonality:	Polyclonal
Conjugate:	This NLRP11 antibody is un-conjugated
Application:	Western Blotting (WB), Immunohistochemistry (Paraffin-embedded Sections) (IHC (p)), Enzyme Immunoassay (EIA)

Product Details

Immunogen:	15 amino acid peptide near the carboxy terminus of Human NALP11
Specificity:	This antibody will recognize all three isoforms of NALP2 and is predicted to not cross-react with other NALP family members.
Cross-Reactivity (Details):	Species reactivity (tested):Human
Purification:	Affinity Chromatography purified via peptide column

Target Details

Target:	NLRP11
Alternative Name:	NALP11 (NLRP11 Products)

Target Details

Background: NALP proteins are cytoplasmic proteins that form a subfamily within the larger CATERPILLER family and are thought to play a crucial role in cell proliferation and reproduction. Like all other NALP family members, NALP11 has a C-terminal leucine-rich repeat (LRR) region, an N-terminal Pyrin domain (PYD) followed by a NACHT domain, and a NACHT-associated domain. While little is known about the function of NALP11, it has been suggested that it has been associated with Crohn's disease. Synonyms: LRR and PYD domains-containing protein 11, NACHT, NLRP11, NOD17, Nucleotide-binding oligomerization domain protein 17, PYPAF6, PYRIN-containing APAF1-like protein 6

Gene ID: 204801

NCBI Accession: [NP_659444](#)

UniProt: [P59045](#)

Pathways: [Inflammasome](#)

Application Details

Application Notes: Optimal working dilution should be determined by the investigator.

Restrictions: For Research Use only

Handling

Buffer: PBS containing 0.02 % Sodium Azide as preservative

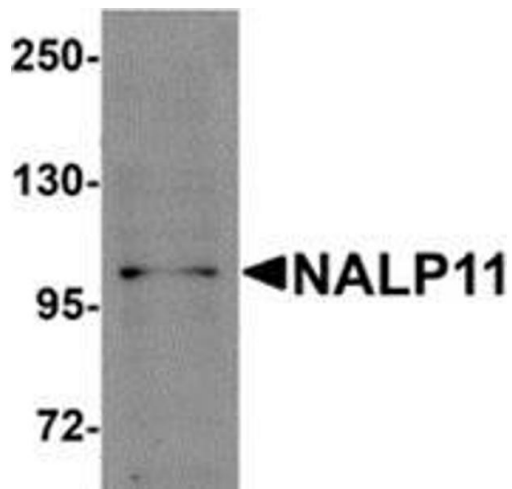
Preservative: Sodium azide

Precaution of Use: This product contains sodium azide: a POISONOUS AND HAZARDOUS SUBSTANCE which should be handled by trained staff only.

Handling Advice: Avoid repeated freezing and thawing.

Storage: 4 °C/-20 °C

Storage Comment: Store the antibody undiluted at 2-8 °C for one month or (in aliquots) at -20 °C for longer.



Western Blotting

Image 1. Western blot analysis of NALP11 in HeLa cell lysate with NALP11 antibody at 1 μ g/ml.