



[Go to Product page](#)

Datasheet for ABIN783721

anti-NLRP13 antibody (N-Term)

1 Image

Overview

Quantity:	0.1 mg
Target:	NLRP13
Binding Specificity:	N-Term
Reactivity:	Human
Host:	Rabbit
Clonality:	Polyclonal
Conjugate:	This NLRP13 antibody is un-conjugated
Application:	Western Blotting (WB), Enzyme Immunoassay (EIA)

Product Details

Immunogen:	19 amino acid peptide near the amino terminus of human NALP13
Specificity:	This antibody detects NLRP13 at N-term.
Cross-Reactivity (Details):	Species reactivity (tested):Human
Purification:	Affinity chromatography purified via peptide column

Target Details

Target:	NLRP13
Alternative Name:	NLRP13 (NLRP13 Products)
Background:	NALP proteins are cytoplasmic proteins that form a subfamily within the larger CATERPILLER family and are thought to play a crucial role in cell proliferation and reproduction. Like all other

Target Details

NALP family members, NALP13 has a C-terminal leucine-rich repeat (LRR) region, an N-terminal Pyrin domain (PYD) followed by a NACHT domain, and a NACHT-associated domain. While little is known about the function of NALP13, it has been suggested that it may be implicated in the activation of proinflammatory caspases via inflammasomes. Synonyms: LRR and PYD domains-containing protein 13, NACHT, NALP13, NOD14

Gene ID: 126204

NCBI Accession: [NP_789780](#)

UniProt: [Q86W25](#)

Pathways: [Inflammasome](#)

Application Details

Application Notes: Optimal working dilution should be determined by the investigator.

Restrictions: For Research Use only

Handling

Buffer: PBS containing 0.02 % sodium azide

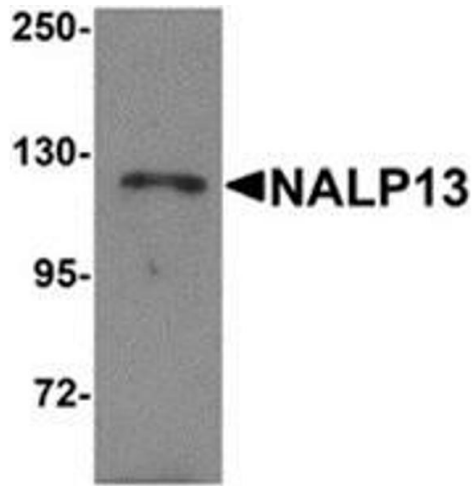
Preservative: Sodium azide

Precaution of Use: This product contains sodium azide: a POISONOUS AND HAZARDOUS SUBSTANCE which should be handled by trained staff only.

Handling Advice: Avoid repeated freezing and thawing.

Storage: 4 °C/-20 °C

Storage Comment: Store at 2 - 8 °C for up to three months or (in aliquots) at -20 °C for longer.



Western Blotting

Image 1. Western blot analysis of NALP13 in K562 cell lysate with NALP13 antibody at 1 µg/ml.