

Datasheet for ABIN783739
anti-MEOX1 antibody (Center)



[Go to Product page](#)

1 Image

Overview

Quantity:	0.1 mg
Target:	MEOX1
Binding Specificity:	Center
Reactivity:	Human, Mouse, Rat
Host:	Rabbit
Clonality:	Polyclonal
Conjugate:	This MEOX1 antibody is un-conjugated
Application:	Western Blotting (WB), Enzyme Immunoassay (EIA)

Product Details

Immunogen:	19 amino acid peptide near the center of human MOX1
Specificity:	This antibody detects MEOX1 at Center.
Cross-Reactivity (Details):	Species reactivity (tested): Human, mouse, rat
Purification:	Affinity chromatography purified via peptide column

Target Details

Target:	MEOX1
Alternative Name:	MEOX1 (MEOX1 Products)
Background:	MOX1, also known as MEOX1, is a member of a subfamily of non-clustered, diverged, antennapedia-like homeobox-containing genes that is first expressed during gastrulation in the

Target Details

early mesoderm and later in presomitic mesoderm, early somites, dermomyotome and sclerotome. Both MOX1 and the related protein MOX2 are required for proper gene expression in all somitic compartments. MOX1 is an upstream regulator of the transcription factors Bapx1, Tbx18, and Uncx and is thus part of a regulatory circuit that functions in the maintenance of rostrocaudal sclerotome polarity and axial skeleton formation. Synonyms: Homeobox protein MOX-1, MOX1

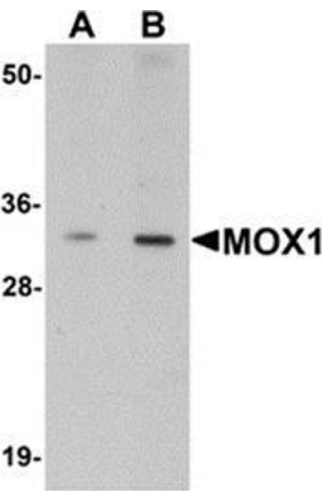
Gene ID:	4222
NCBI Accession:	NP_001035091
UniProt:	P50221
Pathways:	Chromatin Binding

Application Details

Application Notes:	Optimal working dilution should be determined by the investigator.
Restrictions:	For Research Use only

Handling

Buffer:	PBS containing 0.02 % sodium azide
Preservative:	Sodium azide
Precaution of Use:	This product contains sodium azide: a POISONOUS AND HAZARDOUS SUBSTANCE which should be handled by trained staff only.
Handling Advice:	Avoid repeated freezing and thawing.
Storage:	4 °C/-20 °C
Storage Comment:	Store at 2 - 8 °C for up to three months or (in aliquots) at -20 °C for longer.



Western Blotting

Image 1. Western blot analysis of MOX1 in human liver tissue lysate with MOX1 antibody at (A) 1 and (B) 2 µg/ml.