

Datasheet for ABIN783753
anti-PLAC1 antibody (C-Term)[Go to Product page](#)

1 Image

Overview

Quantity:	0.1 mg
Target:	PLAC1
Binding Specificity:	C-Term
Reactivity:	Human
Host:	Rabbit
Clonality:	Polyclonal
Conjugate:	This PLAC1 antibody is un-conjugated
Application:	Western Blotting (WB), Enzyme Immunoassay (EIA)

Product Details

Immunogen:	15 amino acid peptide near the carboxy terminus of human PLAC1
Specificity:	This antibody detects PLAC1 at C-term.
Cross-Reactivity (Details):	Species reactivity (tested):Human
Purification:	Affinity chromatography purified via peptide column

Target Details

Target:	PLAC1
Alternative Name:	PLAC1 (PLAC1 Products)
Background:	PLAC1 was initially identified as a protein expressed specifically in the placenta and other cells derived from the trophoblast lineage during embryonic development, but has also been found

Target Details

to be expressed ectopically in a wide range of human malignancies, particularly breast cancers. PLAC1 is a membrane-associated protein that is thought to serve a receptor-like function modulating cell-cell or ligand receptor interactions unique to the maternal-placental interface. Decreased expression of PLAC1 is associated with decreased expression of cyclin D1 and reduced expression of AKT kinase, which, combined with the fact that PLAC1 is expressed on the surface of cancer cells, suggests that PLAC1 may be an effective candidate for immunotherapeutic treatments of cancer. Synonyms: Placenta-specific protein 1

Gene ID:	10761
----------	-------

NCBI Accession:	NP_068568
-----------------	---------------------------

UniProt:	Q9HBJ0
----------	------------------------

Application Details

Application Notes:	Optimal working dilution should be determined by the investigator.
--------------------	--

Restrictions:	For Research Use only
---------------	-----------------------

Handling

Buffer:	PBS containing 0.02 % sodium azide
---------	------------------------------------

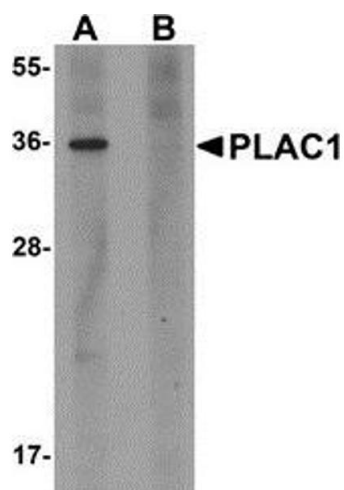
Preservative:	Sodium azide
---------------	--------------

Precaution of Use:	This product contains sodium azide: a POISONOUS AND HAZARDOUS SUBSTANCE which should be handled by trained staff only.
--------------------	--

Handling Advice:	Avoid repeated freezing and thawing.
------------------	--------------------------------------

Storage:	4 °C/-20 °C
----------	-------------

Storage Comment:	Store at 2 - 8 °C for up to three months or (in aliquots) at -20 °C for longer.
------------------	---



Western Blotting

Image 1. Western blot analysis of PLAC1 in human placenta tissue lysate with PLAC1 antibody at 1 $\mu\text{g/ml}$ in (A) the absence and (B) the presence of blocking peptide.