

Datasheet for ABIN783775
anti-SYNPO2 antibody (N-Term)[Go to Product page](#)

1 Image

Overview

Quantity:	0.1 mg
Target:	SYNPO2
Binding Specificity:	N-Term
Reactivity:	Human, Mouse
Host:	Rabbit
Clonality:	Polyclonal
Conjugate:	This SYNPO2 antibody is un-conjugated
Application:	Western Blotting (WB), Enzyme Immunoassay (EIA)

Product Details

Immunogen:	20 amino acid peptide near the amino terminus of human SYNPO2
Specificity:	This antibody detects SYNPO2 at N-term.
Cross-Reactivity (Details):	Species reactivity (tested): Human, mouse, rat
Purification:	Affinity chromatography purified via peptide column

Target Details

Target:	SYNPO2
Alternative Name:	SYNPO2 (SYNPO2 Products)
Background:	SYNPO2 was initially identified as myopodin, a member of the synaptopodin family that contains one PPXY motif and multiple PXXP motifs. It colocalizes with alpha-actinin and is

Target Details

found at the Z-disc and during stress conditions will translocate to the nucleus, suggesting that it is part of signaling pathways in addition to its function as a structural protein. SYNPO2 has been shown to bind to calmodulin, alpha-actinin, and smooth muscle myosin and will stimulate actin polymerization in a calmodulin dependent manner, consistent with its proposed role in organizing the cytoskeleton. While deletion of SYNPO2 has been reported to be highly correlated with the invasiveness of prostate cancers, other reports suggest that down-regulation of SYNPO2 reduces the invasiveness and motility of prostate cancer cells.

Gene ID: 171024

NCBI Accession: [NP_001122405](#)

UniProt: [Q9UMS6](#)

Application Details

Application Notes: Optimal working dilution should be determined by the investigator.

Restrictions: For Research Use only

Handling

Buffer: PBS containing 0.02 % sodium azide

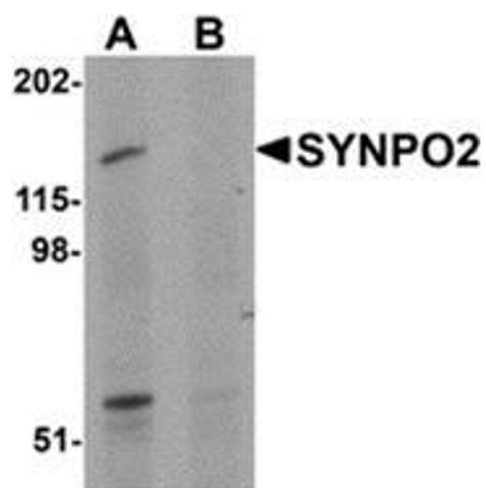
Preservative: Sodium azide

Precaution of Use: This product contains sodium azide: a POISONOUS AND HAZARDOUS SUBSTANCE which should be handled by trained staff only.

Handling Advice: Avoid repeated freezing and thawing.

Storage: 4 °C/-20 °C

Storage Comment: Store at 2 - 8 °C for up to three months or (in aliquots) at -20 °C for longer.



Western Blotting

Image 1. Western blot analysis of SYNPO2 in human skeletal muscle tissue lysate with SYNPO2 antibody at 1 μ g/ml in (A) the absence and (B) the presence of blocking peptide.