

Datasheet for ABIN783789
anti-SYNPO antibody (C-Term)

3 Images

[Go to Product page](#)

Overview

Quantity:	0.1 mg
Target:	SYNPO
Binding Specificity:	C-Term
Reactivity:	Human, Mouse, Rat
Host:	Rabbit
Clonality:	Polyclonal
Conjugate:	This SYNPO antibody is un-conjugated
Application:	Western Blotting (WB), Immunofluorescence (IF), Immunohistochemistry (Paraffin-embedded Sections) (IHC (p)), Enzyme Immunoassay (EIA)

Product Details

Immunogen:	Affinity chromatography purified via peptide column
Specificity:	This antibody detects Synaptopodin / SYNPO at C-term.
Purification:	Affinity chromatography purified via peptide column

Target Details

Target:	SYNPO
Alternative Name:	Synaptopodin / SYNPO (SYNPO Products)
Background:	SYNPO, also known as synaptopodin, is an actin-associated protein in telencephalic dendrites and renal podocytes. SYNPO is tightly associated with the dendritic spine apparatus, and mice lacking the SYNPO gene lack the apparatus. These SYNPO-null mice also demonstrate an

Target Details

impaired ability to express long-term potentiation as well as deficits in spatial memory tasks, indicating that SYNPO is involved in the regulation of synaptic plasticity. Recent studies suggest that SYNPO is linked to neuronal calcium stores and plays a role in the calcium store-associated ability of neurons to undergo long-term plasticity. Synonyms: KIAA1029

Gene ID: 11346

NCBI Accession: [NP_001103444](#)

UniProt: [Q8N3V7](#)

Application Details

Application Notes: Optimal working dilution should be determined by the investigator.

Restrictions: For Research Use only

Handling

Buffer: PBS, 0.02 % Sodium Azide

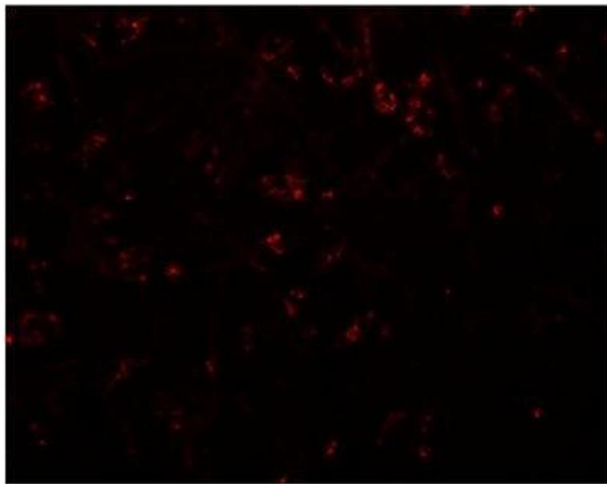
Preservative: Sodium azide

Precaution of Use: This product contains sodium azide: a POISONOUS AND HAZARDOUS SUBSTANCE which should be handled by trained staff only.

Handling Advice: Avoid repeated freezing and thawing.

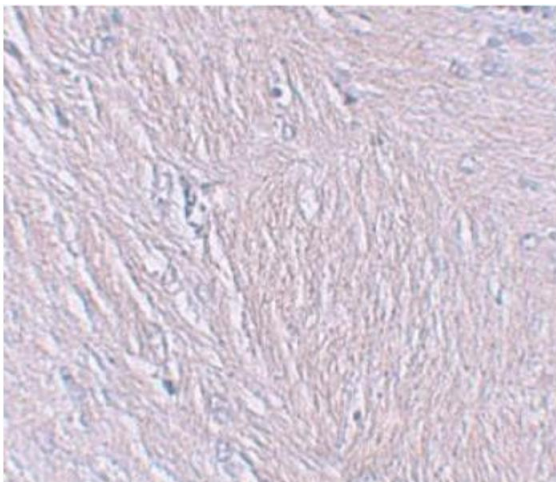
Storage: 4 °C/-20 °C

Storage Comment: Store at 2 - 8 °C for up to three months or (in aliquots) at -20 °C for longer.



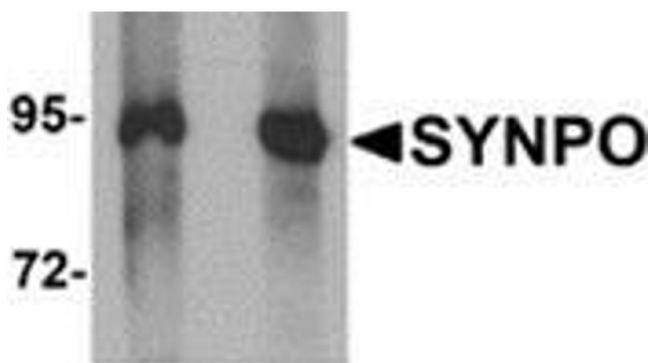
Immunofluorescence

Image 1. Immunofluorescence of SYNPO in human brain tissue with SYNPO Antibody at 20 µg/ml.



Immunohistochemistry (Paraffin-embedded Sections)

Image 2. Immunohistochemistry of SYNPO in human brain tissue with SYNPO Antibody at 2.5 µg/ml.



Western Blotting

Image 3. Western blot analysis of SYNPO in Rat brain tissue lysate with SYNPO antibody at (left) 1 and (right) 2 µg/ml.