

Datasheet for ABIN783803  
**anti-SLC39A5 antibody (Center)**[Go to Product page](#)

## 1 Image

## Overview

Quantity:	0.1 mg
Target:	SLC39A5
Binding Specificity:	Center
Reactivity:	Human, Mouse
Host:	Rabbit
Clonality:	Polyclonal
Conjugate:	This SLC39A5 antibody is un-conjugated
Application:	Western Blotting (WB), Enzyme Immunoassay (EIA)

## Product Details

Immunogen:	17 amino acid peptide near the center of human ZIP5
Specificity:	This antibody detects Zinc transporter ZIP5 / SLC39A5 at Center.
Cross-Reactivity (Details):	Species reactivity (tested): Human, mouse
Purification:	Affinity chromatography purified via peptide column

## Target Details

Target:	SLC39A5
Alternative Name:	Zinc Transporter ZIP5 / SLC39A5 ( <a href="#">SLC39A5 Products</a> )
Background:	The zinc transporter ZIP5, also known as SLC39A5, is a member of a family of divalent ion transporters. Zinc is an essential ion for cells and plays significant roles in the growth,

## Target Details

development, and differentiation. ZIP5 is closely related to ZIP4, and is found in many of the same tissues, including intestine, pancreas, liver, and kidney, but unlike ZIP4, ZIP5 localizes to the basolateral membrane in kidney cells and its activity is not downregulated by zinc repletion. Recent evidence suggests that ZIP4 and ZIP5 are reciprocally regulated, with translation of ZIP5 mRNA decreasing and ZIP5 protein being rapidly internalized and degraded in response to zinc deficiency. Synonyms: Solute carrier family 39 member 5, ZIP-5, ZIP5, Zrt- and Irt-like protein 5

Gene ID: 283375

NCBI Accession: [NP\\_001128667](#)

UniProt: [Q6ZMH5](#)

Pathways: [Transition Metal Ion Homeostasis](#)

## Application Details

Application Notes: Optimal working dilution should be determined by the investigator.

Restrictions: For Research Use only

## Handling

Buffer: PBS containing 0.02 % sodium azide

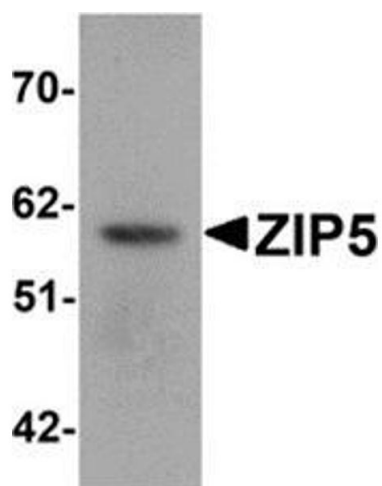
Preservative: Sodium azide

Precaution of Use: This product contains sodium azide: a POISONOUS AND HAZARDOUS SUBSTANCE which should be handled by trained staff only.

Handling Advice: Avoid repeated freezing and thawing.

Storage: 4 °C/-20 °C

Storage Comment: Store at 2 - 8 °C for up to three months or (in aliquots) at -20 °C for longer.



#### Western Blotting

**Image 1.** Western blot analysis of ZIP5 in human spleen tissue lysate with ZIP5 antibody at 1 µg/ml.