



[Go to Product page](#)

Datasheet for ABIN783818

## anti-BCL2L14 antibody (C-Term)

### 2 Images

#### Overview

Quantity:	0.1 mg
Target:	BCL2L14
Binding Specificity:	C-Term
Reactivity:	Human, Mouse, Rat
Host:	Rabbit
Clonality:	Polyclonal
Conjugate:	This BCL2L14 antibody is un-conjugated
Application:	Western Blotting (WB), Immunohistochemistry (Paraffin-embedded Sections) (IHC (p)), Enzyme Immunoassay (EIA)

#### Product Details

Immunogen:	15 amino acids near the C-terminus of human Bcl-G
Specificity:	This antibody detects Bcl-2-like 14 at C-term.
Cross-Reactivity (Details):	Species reactivity (tested):Human, mouse, rat
Purification:	Ion exchange chromatography purified

#### Target Details

Target:	BCL2L14
Alternative Name:	Bcl-2-Like 14 ( <a href="#">BCL2L14 Products</a> )
Background:	Members in the Bcl-2 family are critical regulators of apoptosis by either inhibiting or promoting

## Target Details

---

cell death. Bcl-2 homology 3 (BH3) domain is a potent death domain (reviewed in 1 and 2). BH3 domain containing pro-apoptotic proteins, including Bad, Bax, Bid, Bik, and Hrk, form a growing subclass of the Bcl-2 family. A novel BH3 domain containing protein was recently identified and designated Bcl-G (3). The mRNA of Bcl-G encodes 2 isoforms, Bcl-GL, which is widely expressed in multiple tissues, and Bcl-GS, which is only found in testis. The Bcl-GS protein is predominantly localized to cytoplasmic organelles whereas Bcl-GL was distributed throughout the cytosol. Overexpression of either protein induced apoptosis, although Bcl-GS was far more potent than Bcl-GL. Apoptosis induction was dependent on the BH3 domain and could be suppressed by co-expression with the anti-apoptotic Bcl-XL protein (3).Synonyms: Apoptosis facilitator Bcl-2-like protein 14, BCL2L14, BCLG, Bcl-G, Bcl2-L-14

---

Gene ID: 79370

---

NCBI Accession: [NP\\_110393](#)

---

UniProt: [Q9BZR8](#)

## Application Details

---

Application Notes: Optimal working dilution should be determined by the investigator.

---

Restrictions: For Research Use only

## Handling

---

Buffer: PBS containing 0.02 % sodium azide

---

Preservative: Sodium azide

---

Precaution of Use: This product contains sodium azide: a POISONOUS AND HAZARDOUS SUBSTANCE which should be handled by trained staff only.

---

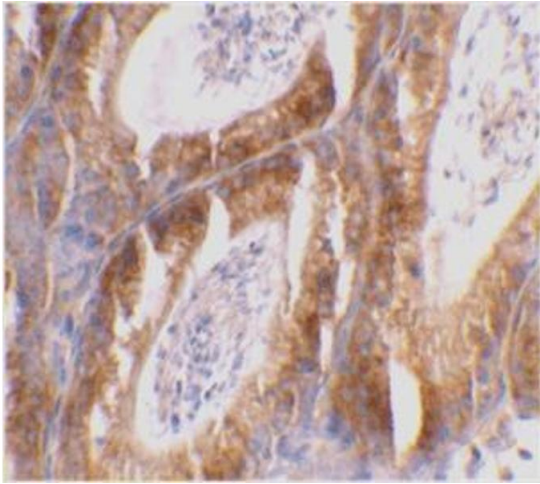
Handling Advice: Avoid repeated freezing and thawing.

---

Storage: 4 °C/-20 °C

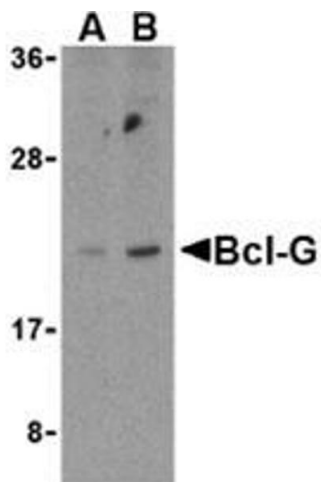
---

Storage Comment: Store at 2 - 8 °C for up to three months or (in aliquots) at -20 °C for longer.



### Immunohistochemistry (Paraffin-embedded Sections)

**Image 1.** Immunohistochemical staining of mouse testis tissue using Bcl-G antibody at 2  $\mu\text{g/ml}$ .



### Western Blotting

**Image 2.** Western blot analysis of Bcl-G in U937 cell lysates with Bcl-G antibody at (A) 2.5 and (B) 5  $\mu\text{g/ml}$ .