

Datasheet for ABIN783820  
**anti-SLC39A10 antibody (Center)**

## 2 Images

[Go to Product page](#)

## Overview

Quantity:	0.1 mg
Target:	SLC39A10
Binding Specificity:	Center
Reactivity:	Human, Mouse, Rat
Host:	Rabbit
Clonality:	Polyclonal
Conjugate:	This SLC39A10 antibody is un-conjugated
Application:	Western Blotting (WB), Immunohistochemistry (Paraffin-embedded Sections) (IHC (p)), Enzyme Immunoassay (EIA)

## Product Details

Immunogen:	17 amino acid peptide near the center of the human ZIP10.
Specificity:	This antibody will not cross-react with the zinc transporter ZIP11.
Purification:	Affinity chromatography

## Target Details

Target:	SLC39A10
Alternative Name:	Zinc Transporter ZIP10 / SLC39A10 ( <a href="#">SLC39A10 Products</a> )
Background:	ZIP10, also known as Slc39A10, is a widely expressed zinc transporter with nine transmembrane domains. Zinc is an essential ion for cells and plays significant roles in the growth, development, and differentiation. ZIP10 mRNA was found to be significantly decreased

## Target Details

in the intestines and kidneys of hypothyroid rats and increased in those of hyperthyroid rats, indicating that ZIP10 is positively regulated by thyroid hormones. ZIP10 mRNA was also found to be upregulated in invasive and metastatic breast cancer and cell lines, suggesting that ZIP10 could serve as a possible marker for the metastatic phenotype and possibly a target for novel treatment strategies. At least three isoforms of ZIP10 are known to exist. This antibody will not cross-react with the zinc transporter ZIP11. Synonyms: KIAA1265, Solute carrier family 39 member 10, ZIP-10, ZIP10, Zrt-and Irt-like protein 10

Gene ID: 57181

NCBI Accession: [NP\\_001120729](#)

UniProt: [Q9ULF5](#)

## Application Details

Application Notes: Optimal working dilution should be determined by the investigator.

Restrictions: For Research Use only

## Handling

Concentration: 1.0 mg/mL

Buffer: PBS containing 0.02 % sodium azide as preservative

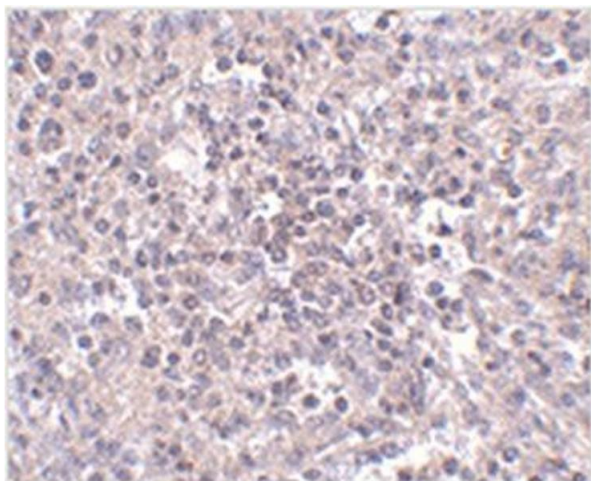
Preservative: Sodium azide

Precaution of Use: This product contains sodium azide: a POISONOUS AND HAZARDOUS SUBSTANCE which should be handled by trained staff only.

Handling Advice: Avoid repeated freezing and thawing.

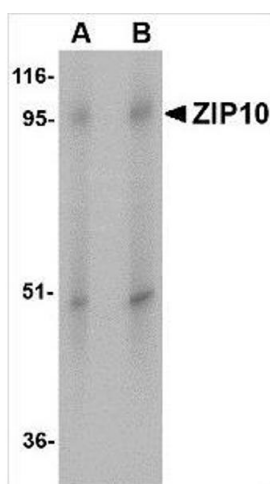
Storage: -20 °C

Storage Comment: Store the antibody (in aliquots) at -20 °C.



#### Immunohistochemistry (Paraffin-embedded Sections)

**Image 1.** Immunohistochemistry of ZIP10 in human spleen tissue with ZIP10 antibody at 2.5 µg/ml.



#### Western Blotting

**Image 2.** Western blot analysis of ZIP10 in human spleen tissue lysate with ZIP10 antibody at (A) 1 and (B) 2 µg/ml.