

Datasheet for ABIN783823
anti-KLRA1 antibody (C-Term)

2 Images

[Go to Product page](#)

Overview

Quantity:	0.1 mg
Target:	KLRA1
Binding Specificity:	C-Term
Reactivity:	Human, Mouse, Rat
Host:	Rabbit
Clonality:	Polyclonal
Conjugate:	This KLRA1 antibody is un-conjugated
Application:	Western Blotting (WB), Enzyme Immunoassay (EIA), Immunohistochemistry (Paraffin-embedded Sections) (IHC (p))

Product Details

Immunogen:	13 amino acid peptide near the carboxy terminus of human KLRA1
Cross-Reactivity (Details):	Species reactivity (tested): Human, mouse, rat
Purification:	Affinity chromatography purified via peptide column

Target Details

Target:	KLRA1
Alternative Name:	KLRA1 (KLRA1 Products)
Background:	KLRA1 (also known as Ly49L) is a member of the LY49 family of receptors. Natural killer (NK) cells that bind to major histocompatibility complex (MHC) class 1. These proteins are classified as either activating or inhibitory receptors based on whether they possess an immunoreceptor

Target Details

tyrosine-based inhibitory motif (ITIM) in their cytoplasmic region (for inhibitory receptors), or an immunoreceptor tyrosine-based activation motif (ITAM) that transmits activating signals resulting in phosphorylation of several substrates. KLRA1 is thought to be an activating receptor, inducing DAP12 phosphorylation in response to antibody-mediated cross-linking of KLRA1 on NK cells. At least three isoforms of KLRA1 are known to exist. Synonyms: KLRA-1, Killer cell lectin-like receptor subfamily A, LY49A, LY49L, Lymphocyte antigen 49a, T lymphocyte antigen A1, member 1

Gene ID: 10090

UniProt: [P20937](#)

Application Details

Application Notes: Optimal working dilution should be determined by the investigator.

Restrictions: For Research Use only

Handling

Buffer: PBS containing 0.02 % sodium azide

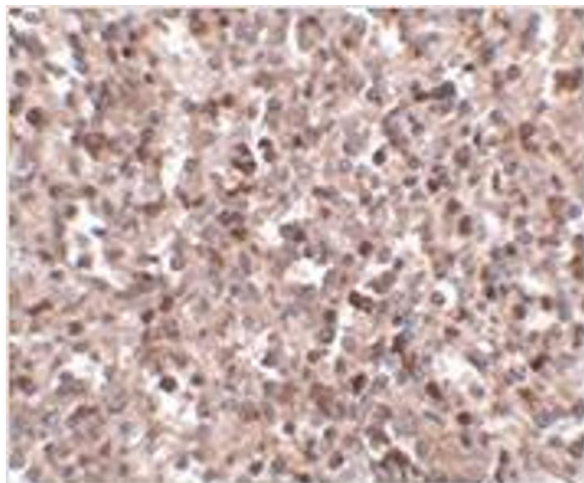
Preservative: Sodium azide

Precaution of Use: This product contains sodium azide: a POISONOUS AND HAZARDOUS SUBSTANCE which should be handled by trained staff only.

Handling Advice: Avoid repeated freezing and thawing.

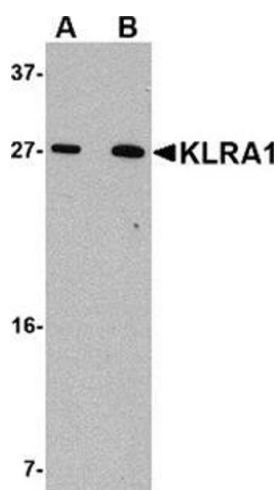
Storage: 4 °C/-20 °C

Storage Comment: Store at 2 - 8 °C for up to three months or (in aliquots) at -20 °C for longer.



Immunohistochemistry (Paraffin-embedded Sections)

Image 1. Immunohistochemistry of KLRA1 in human spleen tissue with KLRA1 antibody at 2.5 µg/ml.



Western Blotting

Image 2. Western blot analysis of KLRA1 in 293 cell lysate with KLRA1 antibody at (A) 1 µg/ml and (B) 2 µg/ml.