

Datasheet for ABIN783830

**anti-RWDD3 antibody (C-Term)**[Go to Product page](#)**1** Image

## Overview

Quantity:	0.1 mg
Target:	RWDD3
Binding Specificity:	C-Term
Reactivity:	Human, Mouse, Rat
Host:	Rabbit
Clonality:	Polyclonal
Conjugate:	This RWDD3 antibody is un-conjugated
Application:	Western Blotting (WB), Enzyme Immunoassay (EIA)

## Product Details

Immunogen:	15 amino acid peptide from near the carboxy terminus of human RWDD3.
Specificity:	This antibody reacts to RWD domain containing 3.
Purification:	Affinity chromatography

## Target Details

Target:	RWDD3
Alternative Name:	RWDD3 ( <a href="#">RWDD3 Products</a> )
Background:	<p>RWDD3 (RSUME), a small RWD-containing protein, has a central role in sumoylation by enhancing SUMO conjugation in the regulatory network of immune inflammatory signals. RWDD3 increases Ikbeta sumoylation and stability. In addition, RWDD3 inhibits TNF-alpha-induced kB-LUC (Luciferase) reporter activity, showing the functional consequence of Ikbeta</p>

## Target Details

increased stability. RSUME-enhanced sumoylation of Ikbeta leads to the inhibition of NF-kbeta activity on two well-known inflammatory genes, IL-8 and cyclooxygenase-2 (Cox-2) and therefore may also favor anti-inflammatory pathways. Expression of RWDD3 was induced under hypoxic conditions and it has a potential role during vascularization. Both BMP-4 and RWDD3 may be interesting targets for inhibiting steps involved in pituitary tumorigenesis.Synonyms: RSUME, RWD domain-containing protein 3, RWD-containing sumoylation enhancer

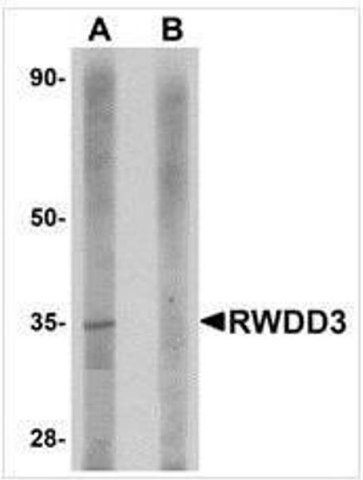
Gene ID:	25950
NCBI Accession:	<a href="#">NP_001121614</a>
UniProt:	<a href="#">Q9Y3V2</a>

## Application Details

Application Notes:	Optimal working dilution should be determined by the investigator.
Restrictions:	For Research Use only

## Handling

Buffer:	PBS containing 0.02 % sodium azide as preservative
Preservative:	Sodium azide
Precaution of Use:	This product contains sodium azide: a POISONOUS AND HAZARDOUS SUBSTANCE which should be handled by trained staff only.
Storage:	4 °C
Storage Comment:	Store the antibody undiluted at 2-8 °C.



Western Blotting

**Image 1.** Western blot analysis of RWDD3 in rat kidney tissue lysate with RWDD3 antibody at 1 µg/ml in (A) the absence and (B) the presence of blocking peptide.