

Datasheet for ABIN783832  
**anti-PPAPDC3 antibody (N-Term)**[Go to Product page](#)

## 1 Image

## Overview

Quantity:	0.1 mg
Target:	PPAPDC3
Binding Specificity:	N-Term
Reactivity:	Human, Mouse, Rat
Host:	Rabbit
Clonality:	Polyclonal
Conjugate:	This PPAPDC3 antibody is un-conjugated
Application:	Western Blotting (WB), Enzyme Immunoassay (EIA)

## Product Details

Immunogen:	19 amino acid peptide from near the amino of terminus human PPAPDC3.
Purification:	Affinity chromatography

## Target Details

Target:	PPAPDC3
Alternative Name:	PPAPDC3 ( <a href="#">PPAPDC3 Products</a> )
Background:	PPAPDC3, also known as nuclear envelope transmembrane protein 39 (NET39), was initially discovered in an in silico screen for secreted or membrane proteins. It is a member of the PAP2 superfamily of phosphatases and haloperoxidases. PPAPDC3 has recently been shown to act as a negative regulator of myoblast differentiation by diminishing the activity of the mammalian target of rapamycin TOR. PPAPDC3 is highly expressed in cardiac and skeletal muscle and



## Target Details

becomes strongly upregulated during cultured myoblast differentiation tissues. Overexpression of PPAPDC3 in myoblasts repressed myogenesis while knockdown by RNA interference promoted differentiation indicating its part in the regulatory mechanism for myogenesis. Synonyms: C9orf67, Phosphatidic acid phosphatase type 2 domain-containing protein 3, Probable lipid phosphate phosphatase PPAPDC3

Gene ID: 84814

NCBI Accession: [NP\\_116117](#)

UniProt: [Q8NBV4](#)

Pathways: [Regulation of Muscle Cell Differentiation, Skeletal Muscle Fiber Development](#)

## Application Details

Application Notes: Optimal working dilution should be determined by the investigator.

Restrictions: For Research Use only

## Handling

Concentration: 1.0 mg/mL

Buffer: PBS containing 0.02 % sodium azide

Preservative: Sodium azide

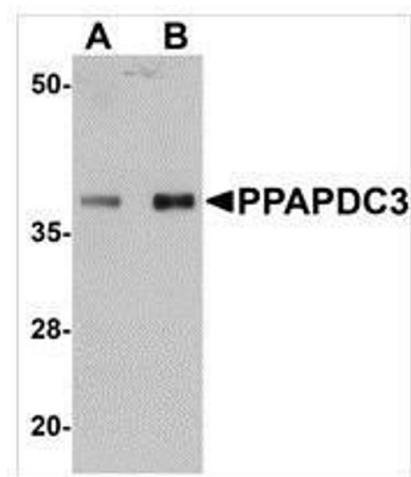
Precaution of Use: This product contains sodium azide: a POISONOUS AND HAZARDOUS SUBSTANCE which should be handled by trained staff only.

Handling Advice: Avoid repeated freezing and thawing.

Storage: -20 °C

Storage Comment: Store the antibody (in aliquots) at -20 °C.





#### Western Blotting

**Image 1.** Western blot analysis of PPAPDC3 in mouse heart tissue lysate with PPAPDC3 antibody at (A) 1 and (B) 2 µg/ml.