

Datasheet for ABIN784000  
**anti-RGS14 antibody (AA 504-516)**

## 2 Images

[Go to Product page](#)

## Overview

Quantity:	0.1 mL
Target:	RGS14
Binding Specificity:	AA 504-516
Reactivity:	Human
Host:	Rabbit
Clonality:	Polyclonal
Conjugate:	This RGS14 antibody is un-conjugated
Application:	Western Blotting (WB), Immunohistochemistry (Paraffin-embedded Sections) (IHC (p))

## Product Details

Immunogen:	Synthetic peptide contain a sequence corresponding to a region within amino acids 504 and 516 of Human RGS14
Isotype:	IgG
Specificity:	Recognizes RGS14. Cellular Localization: Membrane
Cross-Reactivity (Details):	Species reactivity (tested):Human.
Purification:	Antigen-Affinity Chromatography.

## Target Details

Target:	RGS14
---------	-------

## Target Details

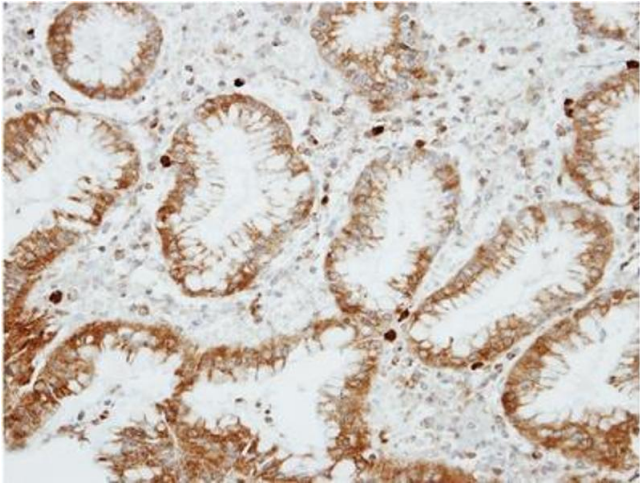
Alternative Name:	RGS14 ( <a href="#">RGS14 Products</a> )
Background:	<p>This gene encodes a member of the regulator of G-protein signaling family. This protein contains one RGS domain, two Raf-like Ras-binding domains (RBDs), and one GoLoco domain. The protein attenuates the signaling activity of G-proteins by binding, through its GoLoco domain, to specific types of activated, GTP-bound G alpha subunits. Acting as a GTPase activating protein (GAP), the protein increases the rate of conversion of the GTP to GDP. This hydrolysis allows the G alpha subunits to bind G beta/gamma subunit heterodimers, forming inactive G-protein heterotrimers, thereby terminating the signal. Alternate transcriptional splice variants of this gene have been observed but have not been thoroughly characterized. Synonyms: Regulator of G-protein signaling 14</p>
Gene ID:	10636, 9606
Pathways:	<a href="#">Myometrial Relaxation and Contraction</a> , <a href="#">Regulation of G-Protein Coupled Receptor Protein Signaling</a> , <a href="#">Platelet-derived growth Factor Receptor Signaling</a>

## Application Details

Application Notes:	Optimal working dilution should be determined by the investigator.
Restrictions:	For Research Use only

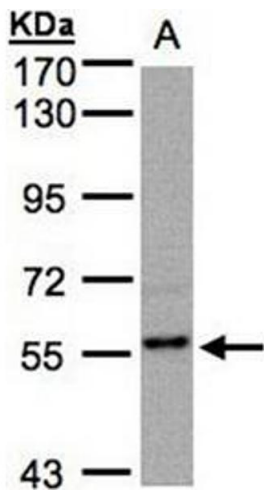
## Handling

Format:	Liquid
Concentration:	0.93 mg/mL
Buffer:	0.1 M Tris, 0.1 M Glycine, 10 % Glycerol ( pH 7) containing 0.01 % Thimerosal as a preservative.
Preservative:	Thimerosal (Merthiolate)
Precaution of Use:	This product contains thimerosal (merthiolate): a POISONOUS AND HAZARDOUS SUBSTANCE which should be handled by trained staff only.
Handling Advice:	Avoid repeated freezing and thawing.
Storage:	-20 °C
Storage Comment:	Store the antibody undiluted (in aliquots) at -20 °C.



**Immunohistochemistry (Paraffin-embedded Sections)**

**Image 1.** Immunohistochemical analysis of Paraffin-Embedded GASTRIC CA, using AP31129PU-N RGS14 antibody at 1/100 dilution.



**Western Blotting**

**Image 2.** AP31129PU-N RGS14 antibody staining of MOLT4 (Lane A) whole cell lysate (30 µg) at 1/500 dilution, 7.5% SDS PAGE.