

Datasheet for ABIN784042  
**anti-CD51 antibody (C-Term)**



[Go to Product page](#)

3 Images

## Overview

Quantity:	50 µg
Target:	CD51 (ITGAV)
Binding Specificity:	C-Term
Reactivity:	Human
Host:	Rabbit
Clonality:	Polyclonal
Conjugate:	This CD51 antibody is un-conjugated
Application:	Western Blotting (WB), Immunofluorescence (IF), Immunohistochemistry (Paraffin-embedded Sections) (IHC (p)), Enzyme Immunoassay (EIA)

## Product Details

Immunogen:	ITGAV antibody was raised against synthetic peptide
Isotype:	IgG
Specificity:	This antibody reacts to ITGAV / CD51.
Purification:	Immunoaffinity chromatography

## Target Details

Target:	CD51 (ITGAV)
Alternative Name:	CD51 / ITGAV ( <a href="#">ITGAV Products</a> )
Background:	ITAGV encodes integrin alpha chain V. Integrins are heterodimeric integral membrane proteins

## Target Details

composed of an alpha chain and a beta chain. The I-domain containing integrin alpha V undergoes post-translational cleavage to yield disulfide-linked heavy and light chains, that combine with multiple integrin beta chains to form different integrins. Among the known associating beta chains (beta chains 1,3,5,6, and 8, 'ITGB1', 'ITGB3', 'ITGB5', 'ITGB6', and 'ITGB8'), each can interact with extracellular matrix ligands, the alpha V beta 3 integrin, perhaps the most studied of these, is referred to as the Vitronectin receptor (VNR). In addition to adhesion, many integrins are known to facilitate signal transduction. Synonyms: Integrin alpha-V, MSK8, VNRA, Vitronectin receptor subunit alpha

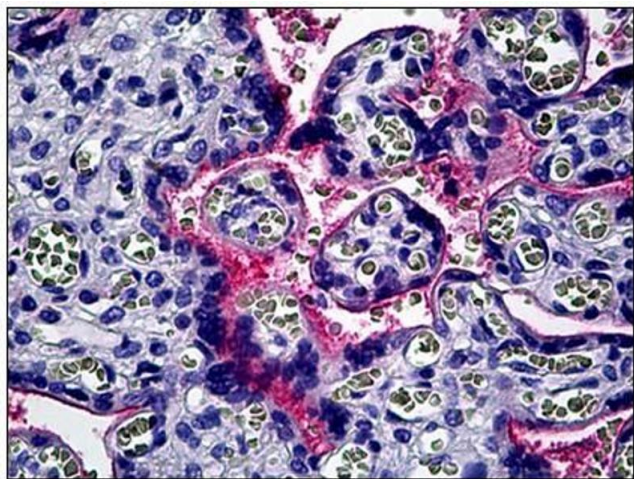
Gene ID:	3685
NCBI Accession:	<a href="#">NP_001138472</a>
Pathways:	<a href="#">Cell-Cell Junction Organization</a> , <a href="#">Signaling Events mediated by VEGFR1 and VEGFR2</a> , <a href="#">Growth Factor Binding</a> , <a href="#">Integrin Complex</a>

## Application Details

Application Notes:	Optimal working dilution should be determined by the investigator.
Restrictions:	For Research Use only

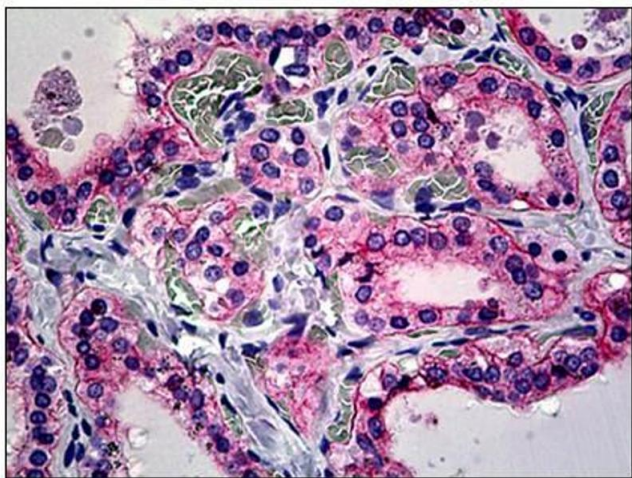
## Handling

Concentration:	1,0 mg/mL
Buffer:	PBS (without Mg2+, Ca2+), pH 7.4, 150 mM sodium chloride, 0.02 % sodium azide, 50 % glycerol
Preservative:	Sodium azide
Precaution of Use:	This product contains sodium azide: a POISONOUS AND HAZARDOUS SUBSTANCE which should be handled by trained staff only.
Handling Advice:	Avoid repeated freezing and thawing.
Storage:	-20 °C



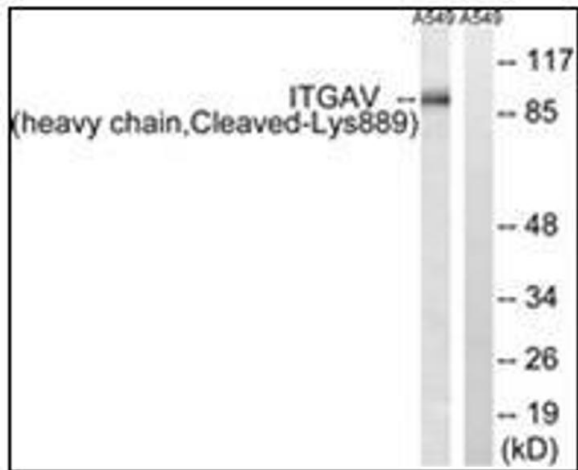
**Immunohistochemistry (Paraffin-embedded Sections)**

**Image 1.** Human Placenta: Formalin-Fixed, Paraffin-Embedded (FFPE)



**Immunohistochemistry (Paraffin-embedded Sections)**

**Image 2.** Human Thyroid: Formalin-Fixed, Paraffin-Embedded (FFPE)



**Western Blotting**

**Image 3.** Western blot analysis of extracts from A549 cells, treated with etoposide 25uM 1h, using ITGAV (heavy chain,Cleaved-Lys889) Antibody. The lane on the right is treated with the synthesized peptide.