



[Go to Product page](#)

Datasheet for ABIN784136
anti-FREM1 antibody (C-Term)

1 Image

Overview

Quantity:	50 µg
Target:	FREM1
Binding Specificity:	C-Term
Reactivity:	Human, Mouse
Host:	Rabbit
Clonality:	Polyclonal
Conjugate:	This FREM1 antibody is un-conjugated
Application:	Western Blotting (WB), Immunohistochemistry (Paraffin-embedded Sections) (IHC (p)), Immunofluorescence (IF), Enzyme Immunoassay (EIA)

Product Details

Immunogen:	Synthetic peptide - KLH conjugated
Isotype:	IgG
Specificity:	This antibody reacts to the internal region of FREM1.
Cross-Reactivity (Details):	Species reactivity (expected):Mouse and Rat. Species reactivity (tested):Human.
Purification:	Immunoaffinity chromatography

Target Details

Target:	FREM1
---------	-------

Target Details

Alternative Name:	FREM1 (FREM1 Products)
Background:	Synonyms: C9orf143, C9orf145, C9orf154, FRAS1-related extracellular matrix protein 1, Protein QBRICK
Gene ID:	158326
NCBI Accession:	NP_001171175

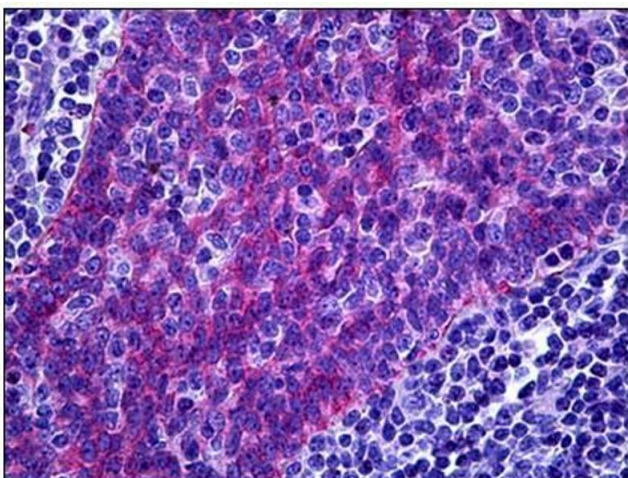
Application Details

Application Notes:	Optimal working dilution should be determined by the investigator.
Restrictions:	For Research Use only

Handling

Concentration:	1,0 mg/mL
Buffer:	PBS containing 0.02 % sodium azide as preservative
Preservative:	Sodium azide
Precaution of Use:	This product contains sodium azide: a POISONOUS AND HAZARDOUS SUBSTANCE which should be handled by trained staff only.
Storage:	4 °C
Storage Comment:	Store the antibody undiluted at 2-8 °C.

Images



Immunohistochemistry (Paraffin-embedded Sections)

Image 1. Human Tonsil: Formalin-Fixed, Paraffin-Embedded (FFPE)