

Datasheet for ABIN784201
anti-DPYSL2 antibody (C-Term)

5 Images

[Go to Product page](#)

Overview

Quantity:	50 µg
Target:	DPYSL2
Binding Specificity:	C-Term
Reactivity:	Human, Mouse, Rat
Host:	Rabbit
Clonality:	Polyclonal
Conjugate:	This DPYSL2 antibody is un-conjugated
Application:	Western Blotting (WB), Immunofluorescence (IF), Immunohistochemistry (Paraffin-embedded Sections) (IHC (p)), Enzyme Immunoassay (EIA)

Product Details

Immunogen:	Synthetic peptide - KLH conjugated Remarks: Antigen Modification: C-Terminus
Isotype:	IgG
Specificity:	This antibody detects endogenous levels of total DPYSL2 protein.
Cross-Reactivity (Details):	Species reactivity (expected):Mouse and Rat. Species reactivity (tested):Human.
Purification:	Immunoaffinity Chromatography.

Target Details

Target:	DPYSL2
---------	--------

Target Details

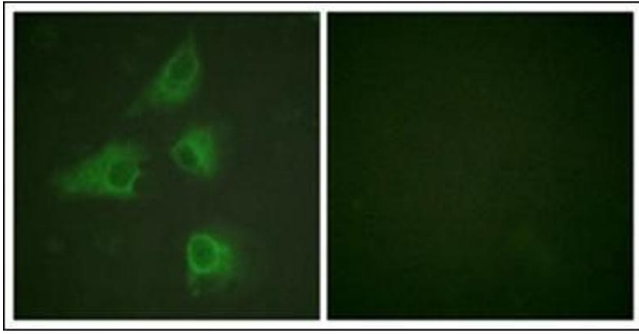
Alternative Name:	DPYSL2 / CRMP2 (DPYSL2 Products)
Background:	<p>DRP-2, also known as Collapsin Response Mediator Protein-2 (CRMP-2), is expressed at high levels in the developing nervous system and plays a critical role in axonal outgrowth by specifying axon/dendrite fate and establishing neuronal polarity. CRMP-2 enhances axon elongation and branching by binding to tubulin heterodimers to promote microtubule assembly. GSK-3b inactivates CRMP-2 by phosphorylating it at Thr514. CRMP-2 is primed following phosphorylation at Ser522 by CDK5 and at Thr518 by GSK-3b. Phosphorylation of CRMP-2, which decreases tubulin binding ability, can be inhibited by NT-3 and BDNF through the PI3 kinase/Akt pathway. CRMP-2 also mediates semaphorin-induced growth cone collapse. Hyperphosphorylation of CRMP-2 and is found in Alzheimer disease plaques with concurrent elevated GSK-3b activity in these patients. Synonyms: Collapsin response mediator protein 2, DRP-2, Dihydropyrimidinase-related protein 2, N2A3</p>
Gene ID:	1808
NCBI Accession:	NP_001184222
Pathways:	Regulation of Cell Size

Application Details

Application Notes:	Optimal working dilution should be determined by the investigator.
Restrictions:	For Research Use only

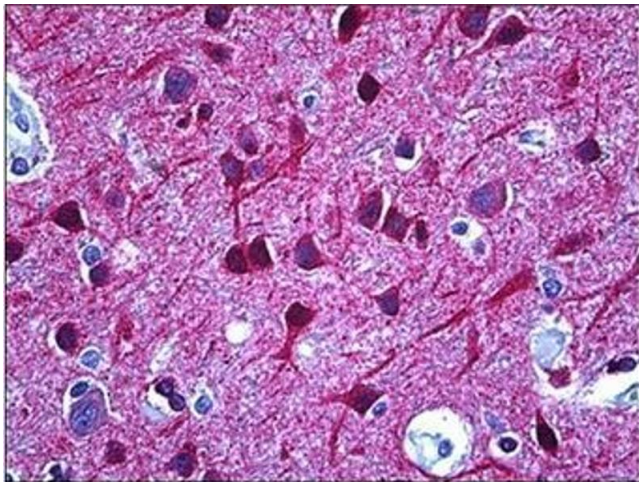
Handling

Concentration:	1.0 mg/mL
Buffer:	PBS (without Mg ²⁺ , Ca ²⁺), pH 7.4 containing 150 mM Sodium Chloride, 0.02 % Sodium Azide and 50 % Glycerol.
Preservative:	Sodium azide
Precaution of Use:	This product contains sodium azide: a POISONOUS AND HAZARDOUS SUBSTANCE which should be handled by trained staff only.
Handling Advice:	Avoid repeated freezing and thawing.
Storage:	4 °C/-20 °C
Storage Comment:	Store the antibody undiluted at 2-8 °C for one month or (in aliquots) at -20 °C for longer.



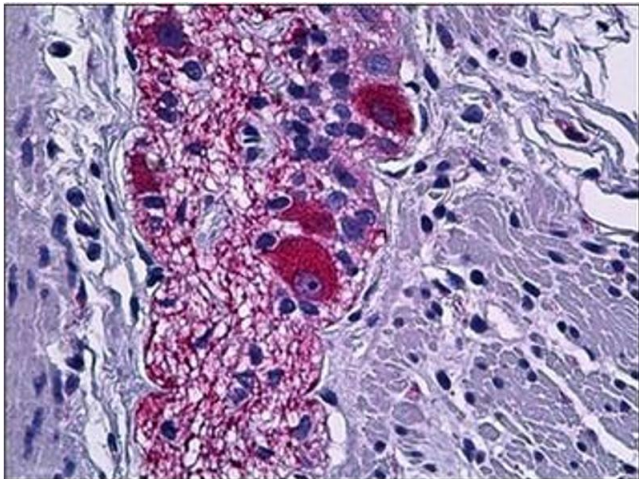
Immunofluorescence

Image 1. Immunofluorescence analysis of HeLa cells, using DPYSL2 Antibody. The picture on the right is treated with the synthesized peptide.



Immunohistochemistry (Paraffin-embedded Sections)

Image 2. Human Brain, Cortex: Formalin-Fixed, Paraffin-Embedded (FFPE)



Immunohistochemistry (Paraffin-embedded Sections)

Image 3. Human Colon, Peripheral Nerve: Formalin-Fixed, Paraffin-Embedded (FFPE)

Please check the [product details page](#) for more images. Overall 5 images are available for ABIN784201.