

Datasheet for ABIN784208

anti-MT-ATP6 antibody (Subunit alpha)

3 Images

[Go to Product page](#)

Overview

Quantity:	50 µg
Target:	MT-ATP6
Binding Specificity:	Subunit alpha
Reactivity:	Human, Mouse, Rat
Host:	Rabbit
Clonality:	Polyclonal
Conjugate:	This MT-ATP6 antibody is un-conjugated
Application:	Western Blotting (WB), Enzyme Immunoassay (EIA), Immunohistochemistry (Paraffin-embedded Sections) (IHC (p))

Product Details

Immunogen:	Synthetic peptide - KLH conjugated
Sequence:	Antigen Modification: Internal
Isotype:	IgG
Specificity:	This antibody detects endogenous levels of ATP5A1 protein.
Cross-Reactivity (Details):	Species reactivity (expected): Mouse and Rat. Species reactivity (tested): Human.
Purification:	Immunoaffinity Chromatography.

Target Details

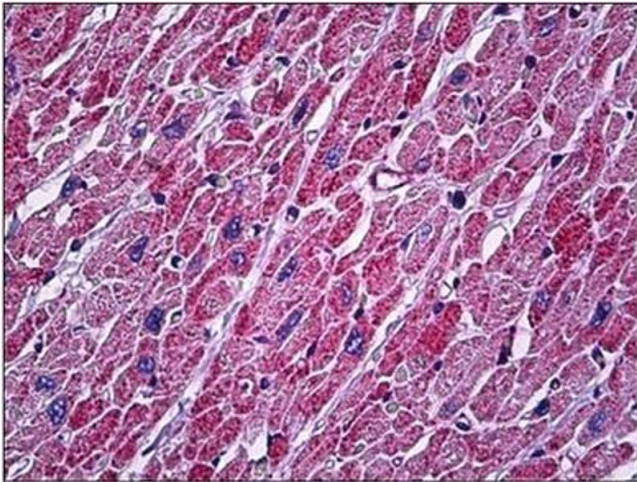
Target:	MT-ATP6
Alternative Name:	ATP Synthase Subunit alpha (MT-ATP6 Products)
Background:	Synonyms: ATP5A, ATP5A1, ATP5AL2, ATPM, Complex V alpha subunit, F1F0 ATP synthase alpha subunit, mitochondrial ATP synthase subunit alpha
Gene ID:	498
NCBI Accession:	NP_001001937
Pathways:	Proton Transport , Ribonucleoside Biosynthetic Process

Application Details

Application Notes:	Optimal working dilution should be determined by the investigator.
Restrictions:	For Research Use only

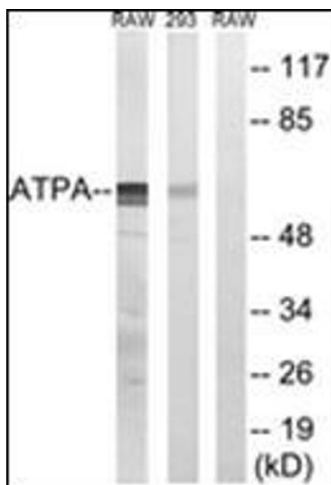
Handling

Concentration:	1.0 mg/mL
Buffer:	PBS (without Mg ²⁺ , Ca ²⁺), pH 7.4 containing 150 mM Sodium Chloride, 0.02 % Sodium Azide and 50 % Glycerol.
Preservative:	Sodium azide
Precaution of Use:	This product contains sodium azide: a POISONOUS AND HAZARDOUS SUBSTANCE which should be handled by trained staff only.
Handling Advice:	Avoid repeated freezing and thawing.
Storage:	4 °C/-20 °C
Storage Comment:	Store the antibody undiluted at 2-8 °C for one month or (in aliquots) at -20 °C for longer.



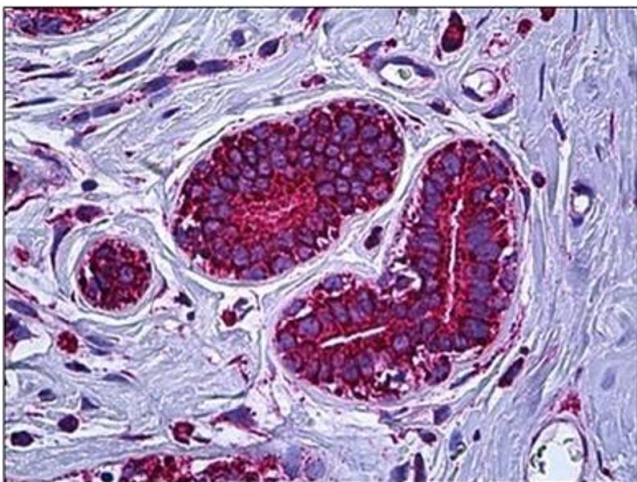
Immunohistochemistry (Paraffin-embedded Sections)

Image 1. Human Heart: Formalin-Fixed, Paraffin-Embedded (FFPE)



Western Blotting

Image 2. Western blot analysis of extracts from 293/RAW264.7 cells, using ATP5A1 Antibody. The lane on the right is treated with the synthesized peptide.



Immunohistochemistry (Paraffin-embedded Sections)

Image 3. Human Breast: Formalin-Fixed, Paraffin-Embedded (FFPE)