

Datasheet for ABIN784216  
**anti-MMP11 antibody (Internal Region)**[Go to Product page](#)

## 4 Images

## Overview

Quantity:	50 µg
Target:	MMP11
Binding Specificity:	Internal Region
Reactivity:	Human, Mouse, Rat
Host:	Rabbit
Clonality:	Polyclonal
Conjugate:	This MMP11 antibody is un-conjugated
Application:	Western Blotting (WB), Immunofluorescence (IF), Immunohistochemistry (Paraffin-embedded Sections) (IHC (p)), Enzyme Immunoassay (EIA)

## Product Details

Immunogen:	Synthetic peptide - KLH conjugated Remarks: Antigen Modification: Internal
Isotype:	IgG
Specificity:	This antibody detects endogenous levels of total MMP-11 protein.
Cross-Reactivity (Details):	Species reactivity (expected):Mouse and Rat. Species reactivity (tested):Human.
Purification:	Immunoaffinity Chromatography.

## Target Details

Target:	MMP11
---------	-------

## Target Details

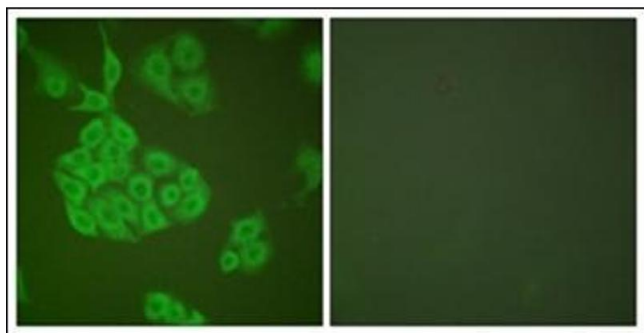
Alternative Name:	MMP-11 ( <a href="#">MMP11 Products</a> )
Background:	MMP11, also known as stromelysin 3, is overexpressed in the stromal cells of invasive breast carcinomas but not in the stromal cells surrounding benign breast fibroadenomas. MMP11 is secreted in its proenzyme form and the zymogen has a mass of 64 kDa. The enzyme is rapidly activated to a 58 kDa form, a 45-47 kDa size, then to a 28 kDa final active form. MMP11 is not constitutively produced by most cell types. It has been found in lung fibroblasts and gingival fibroblasts when stimulated with EGF, as well as breast tumor and osteocarcinoma cell lines. Synonyms: MMP11, Matrix metalloproteinase-11, SL-3, ST3, STMY3, Stromelysin-3
Gene ID:	4320
NCBI Accession:	<a href="#">NP_005931</a>

## Application Details

Application Notes:	Optimal working dilution should be determined by the investigator.
Restrictions:	For Research Use only

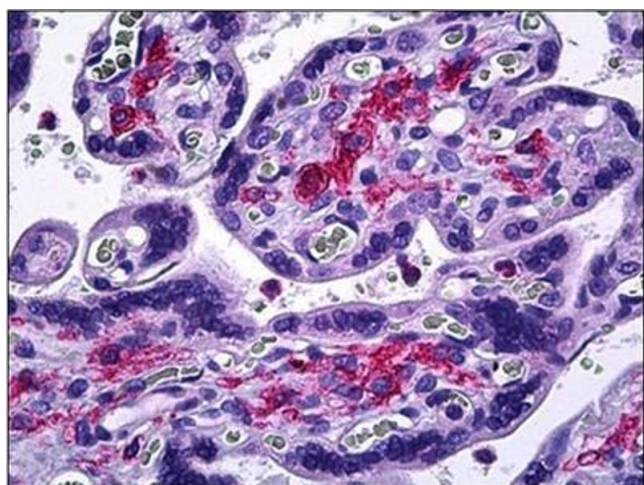
## Handling

Concentration:	1.0 mg/mL
Buffer:	PBS (without Mg <sup>2+</sup> , Ca <sup>2+</sup> ), pH 7.4 containing 150 mM Sodium Chloride, 0.02 % Sodium Azide and 50 % Glycerol.
Preservative:	Sodium azide
Precaution of Use:	This product contains sodium azide: a POISONOUS AND HAZARDOUS SUBSTANCE which should be handled by trained staff only.
Handling Advice:	Avoid repeated freezing and thawing.
Storage:	4 °C/-20 °C
Storage Comment:	Store the antibody undiluted at 2-8 °C for one month or (in aliquots) at -20 °C for longer.



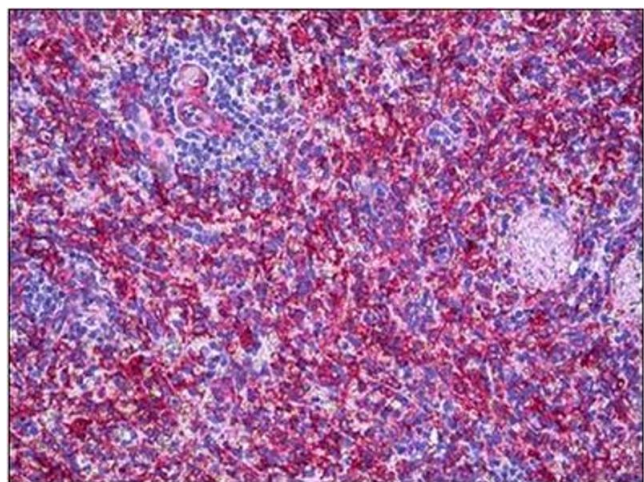
#### Immunofluorescence

**Image 1.** Immunofluorescence analysis of A549 cells, using MMP-11 Antibody. The picture on the right is treated with the synthesized peptide.



#### Immunohistochemistry (Paraffin-embedded Sections)

**Image 2.** Human Placenta: Formalin-Fixed, Paraffin-Embedded (FFPE)



#### Immunohistochemistry (Paraffin-embedded Sections)

**Image 3.** Human Spleen: Formalin-Fixed, Paraffin-Embedded (FFPE)

Please check the [product details page](#) for more images. Overall 4 images are available for ABIN784216.