



[Go to Product page](#)

Datasheet for ABIN784231

## anti-TPX2 antibody (Internal Region)

### 3 Images

#### Overview

Quantity:	50 µg
Target:	TPX2
Binding Specificity:	Internal Region
Reactivity:	Human, Mouse
Host:	Rabbit
Clonality:	Polyclonal
Conjugate:	This TPX2 antibody is un-conjugated
Application:	Western Blotting (WB), Immunohistochemistry (Paraffin-embedded Sections) (IHC (p)), Enzyme Immunoassay (EIA)

#### Product Details

Immunogen:	Synthetic peptide - KLH conjugated Remarks: Antigen Modification: Internal
Isotype:	IgG
Specificity:	This antibody detects endogenous levels of total TPX2 protein.
Cross-Reactivity (Details):	Species reactivity (expected): Mouse. Species reactivity (tested): Human.
Purification:	Immunoaffinity Chromatography.

#### Target Details

Target:	TPX2
---------	------

## Target Details

---

Alternative Name:	TPX2 / DIL2 ( <a href="#">TPX2 Products</a> )
Background:	TPX2 is a spindle assembly factor, required for normal assembly of mitotic spindles, for normal assembly of microtubules during apoptosis, and for chromatin and/or kinetochore dependent microtubule nucleation. TPX2 mediates AURKA localization to spindle microtubules, activates AURKA by promoting its autophosphorylation at 'Thr-288', and protects this residue against dephosphorylation. Synonyms: C20orf1, C20orf2, DIL-2, Differentially expressed in cancerous and non-cancerous lung cells 2, HCA519, Hepatocellular carcinoma-associated antigen 519, Restricted expression proliferation-associated protein 100, Targeting protein for Xklp2
Gene ID:	22974
NCBI Accession:	<a href="#">NP_036244</a>

## Application Details

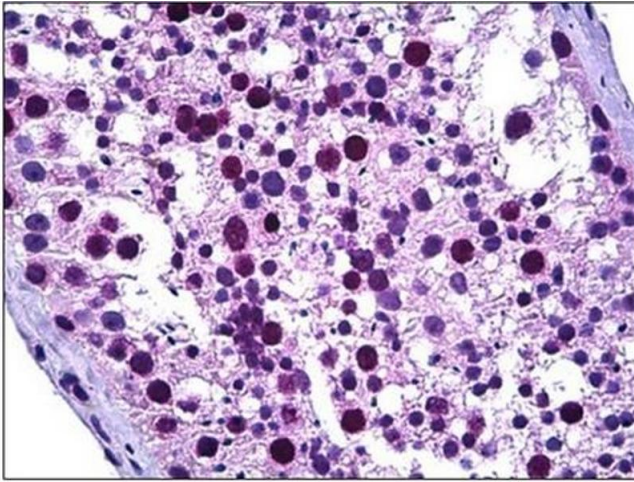
---

Application Notes:	Optimal working dilution should be determined by the investigator.
Restrictions:	For Research Use only

## Handling

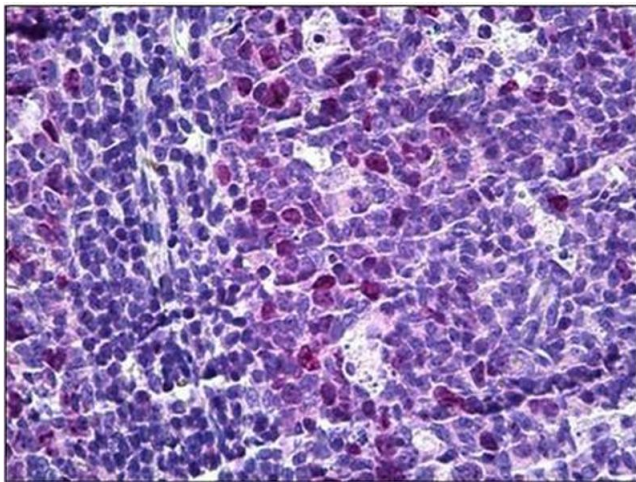
---

Concentration:	1.0 mg/mL
Buffer:	PBS (without Mg <sup>2+</sup> , Ca <sup>2+</sup> ), pH 7.4, 150 mM Sodium Chloride, 0.02 % Sodium Azide and 50 % Glycerol.
Preservative:	Sodium azide
Precaution of Use:	This product contains sodium azide: a POISONOUS AND HAZARDOUS SUBSTANCE which should be handled by trained staff only.
Handling Advice:	Avoid repeated freezing and thawing.
Storage:	4 °C/-20 °C
Storage Comment:	Store the antibody undiluted at 2-8 °C for one month or (in aliquots) at -20 °C for longer.



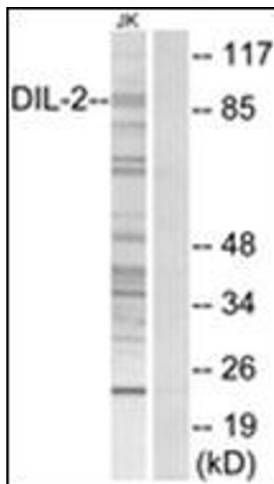
### Immunohistochemistry (Paraffin-embedded Sections)

**Image 1.** Human Testis: Formalin-Fixed, Paraffin-Embedded (FFPE)



### Immunohistochemistry (Paraffin-embedded Sections)

**Image 2.** Human Tonsil: Formalin-Fixed, Paraffin-Embedded (FFPE)



### Western Blotting

**Image 3.** Western blot analysis of extracts from Jurkat cells, using TPX2 Antibody. The lane on the right is treated with the synthesized peptide.