



[Go to Product page](#)

Datasheet for ABIN784580

## anti-MARK4 antibody (Internal Region)

### 2 Images

#### Overview

Quantity:	50 µg
Target:	MARK4
Binding Specificity:	Internal Region
Reactivity:	Human, Mouse
Host:	Rabbit
Clonality:	Polyclonal
Conjugate:	This MARK4 antibody is un-conjugated
Application:	Immunofluorescence (IF), Immunohistochemistry (Paraffin-embedded Sections) (IHC (p)), Enzyme Immunoassay (EIA)

#### Product Details

Immunogen:	Synthetic peptide Remarks: Antigen Modification: Internal
Isotype:	IgG
Specificity:	This antibody detects endogenous levels of total MARK4 protein.
Cross-Reactivity (Details):	Species reactivity (expected):Mouse. Species reactivity (tested):Human.
Purification:	Immunoaffinity Chromatography

#### Target Details

Target:	MARK4
---------	-------

## Target Details

---

Alternative Name:	MARK4 ( <a href="#">MARK4 Products</a> )
Background:	MARKL1, a MARK type protein kinase, contains a N-terminal serine/threonine kinase domain, a central ubiquitin-associated domain and a C-terminal KA1-associated kinase domain. A smaller mRNA transcript, lacking exon 16 containing the KA1-associated kinase domain, also has been reported. Synonyms: MAP microtubule affinity-regulating kinase 4, MARKL1
Gene ID:	57787
NCBI Accession:	<a href="#">NP_001186796</a>

## Application Details

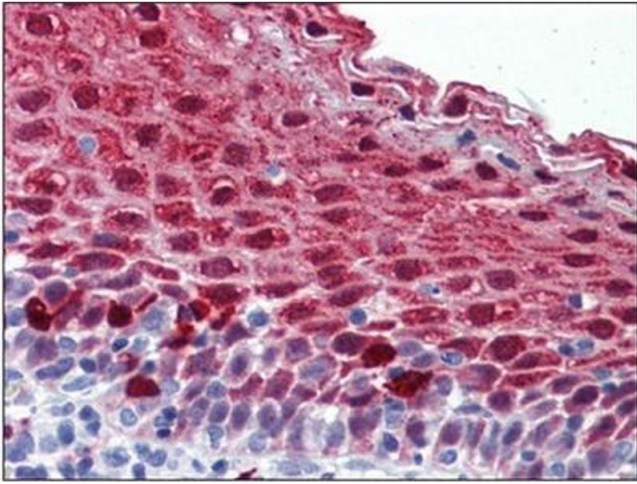
---

Application Notes:	Optimal working dilution should be determined by the investigator.
Restrictions:	For Research Use only

## Handling

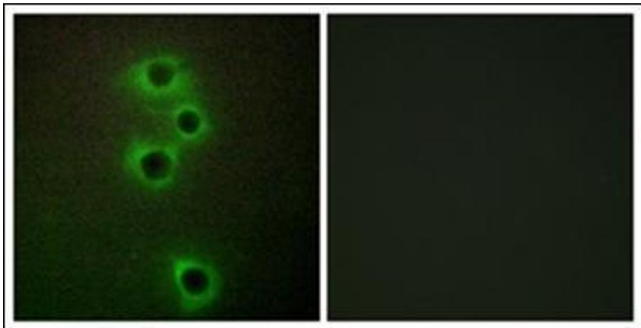
---

Concentration:	1.0 mg/mL
Buffer:	PBS (without Mg <sup>2+</sup> , Ca <sup>2+</sup> ), pH 7.4, 150 mM Sodium Chloride, 0.02 % Sodium Azide and 50 % Glycerol
Preservative:	Sodium azide
Precaution of Use:	This product contains sodium azide: a POISONOUS AND HAZARDOUS SUBSTANCE which should be handled by trained staff only.
Storage:	-20 °C
Storage Comment:	Store the antibody (in aliquots) at -20 °C. Avoid freeze-thaw cycles.



### Immunohistochemistry (Paraffin-embedded Sections)

**Image 1.** Human Tonsil: Formalin-Fixed, Paraffin-Embedded (FFPE)



### Immunofluorescence

**Image 2.** Immunofluorescence analysis of A549 cells, using MARK4 Antibody. The picture on the right is treated with the synthesized peptide.