

Datasheet for ABIN784587

**anti-ST6GAL1 antibody (Internal Region)**[Go to Product page](#)**2** Images

## Overview

Quantity:	50 µg
Target:	ST6GAL1
Binding Specificity:	Internal Region
Reactivity:	Human, Mouse, Rat
Host:	Rabbit
Clonality:	Polyclonal
Conjugate:	This ST6GAL1 antibody is un-conjugated
Application:	Western Blotting (WB), Immunohistochemistry (Paraffin-embedded Sections) (IHC (p)), Enzyme Immunoassay (EIA)

## Product Details

Immunogen:	Synthetic peptide corresponding to the Internal region of Human ST6GAL1. Remarks: Antigen Modification: Internal
Isotype:	IgG
Specificity:	This antibody detects endogenous levels of total ST6GAL1 protein.
Cross-Reactivity (Details):	Species reactivity (expected): Mouse and Rat. Species reactivity (tested): Human.
Purification:	Immunoaffinity Chromatography

## Target Details

Target:	ST6GAL1
---------	---------

### Target Details

Alternative Name:	CD75 / ST6GAL1 ( <a href="#">ST6GAL1 Products</a> )
Background:	<p>The protein encoded by this gene is a type II membrane protein that catalyzes the transfer of sialic acid from CMP-sialic acid to galactose-containing substrates. The encoded protein, which is normally found in the Golgi but which can be proteolytically processed to a soluble form, is involved in the generation of the cell-surface carbohydrate determinants and differentiation antigens HB-6, CDw75, and CD76. This protein is a member of glycosyltransferase family 29. Three transcript variants encoding two different isoforms have been found for this gene.</p> <p>Synonyms: 6-sialyltransferase 1, B-Cell marker, Beta-galactoside alpha-2, CMP-N-acetylneuraminate-beta-galactosamide-alpha-2, SIAT1</p>

Gene ID: 6480

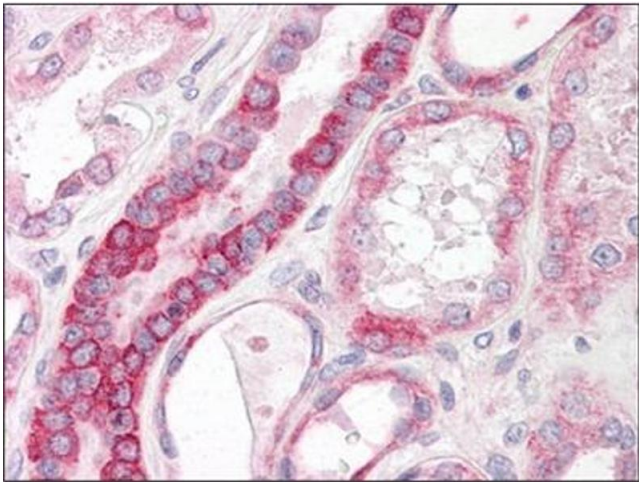
NCBI Accession: [NP\\_003023](#)

### Application Details

Application Notes:	Optimal working dilution should be determined by the investigator.
Restrictions:	For Research Use only

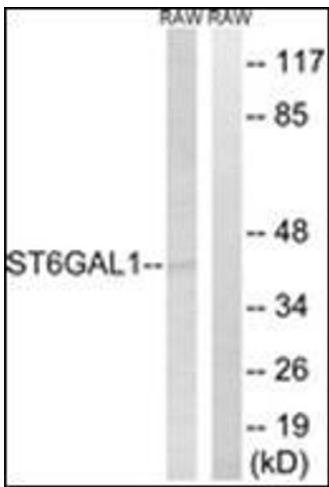
### Handling

Concentration:	1.0 mg/mL
Buffer:	PBS (without Mg2+, Ca2+), pH 7.4, 150 mM Sodium Chloride, 0.02 % Sodium Azide and 50 % Glycerol
Preservative:	Sodium azide
Precaution of Use:	This product contains sodium azide: a POISONOUS AND HAZARDOUS SUBSTANCE which should be handled by trained staff only.
Storage:	-20 °C
Storage Comment:	Store the antibody (in aliquots) at -20 °C or lower. Avoid freeze-thaw cycles.



**Immunohistochemistry (Paraffin-embedded Sections)**

**Image 1.** Human Kidney: Formalin-Fixed, Paraffin-Embedded (FFPE)



**Western Blotting**

**Image 2.** Western blot analysis of extracts from RAW264.7 cells, using ST6GAL1 Antibody. The lane on the right is treated with the synthesized peptide.