

Datasheet for ABIN784590
anti-PTGER2 antibody (C-Term)



[Go to Product page](#)

2 Images

Overview

Quantity:	50 µg
Target:	PTGER2
Binding Specificity:	C-Term
Reactivity:	Human, Mouse, Rat
Host:	Rabbit
Clonality:	Polyclonal
Conjugate:	This PTGER2 antibody is un-conjugated
Application:	Western Blotting (WB), Immunohistochemistry (Paraffin-embedded Sections) (IHC (p)), Enzyme Immunoassay (EIA)

Product Details

Immunogen:	Synthetic peptide from Human PE2R2. Remarks: Antigen Modification: C-Terminus.
Isotype:	IgG
Specificity:	This antibody detects endogenous levels of total PE2R2 protein.
Cross-Reactivity (Details):	Species reactivity (expected):Mouse and Rat. Species reactivity (tested):Human.
Purification:	Immunoaffinity Chromatography

Target Details

Target:	PTGER2
---------	--------

Target Details

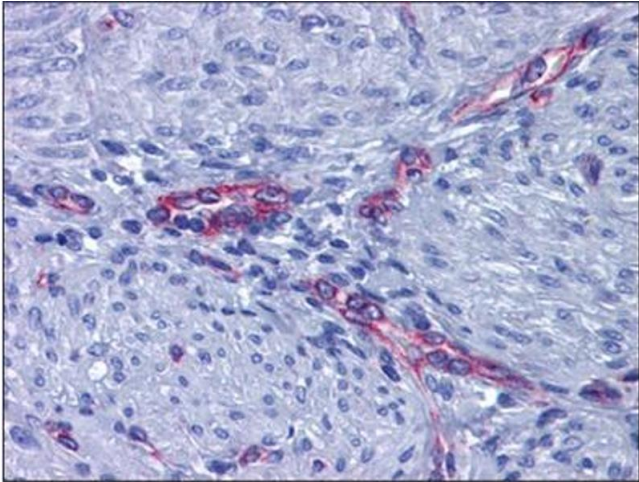
Alternative Name:	PTGER2 (PTGER2 Products)
Background:	Prostaglandin E Receptor EP2 is a member of the Prostanoid Receptor subfamily. Along with several other receptor subtypes (EP1, EP3, and EP4), it mediates the diverse biological effects of Prostaglandin E2 (PGE2). PGE2 has been implicated in numerous processes, including immune response modulation, male erectile function, induction of labor, cervical cancer, control of blood pressure, asthma, and more recently, Alzheimer's Disease.Synonyms: EP2, PGE receptor EP2, PGE2 receptor EP2 subtype, Prostaglandin E receptor 2, Prostaglandin E2 receptor EP2, Prostanoid EP2 receptor
Gene ID:	5732
NCBI Accession:	NP_000947

Application Details

Application Notes:	Optimal working dilution should be determined by the investigator.
Restrictions:	For Research Use only

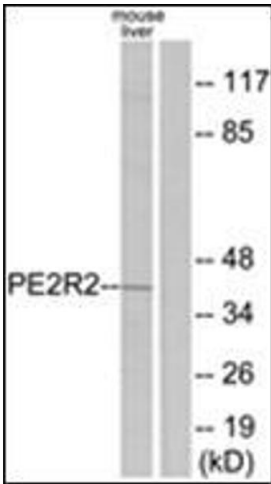
Handling

Concentration:	1.0 mg/mL
Buffer:	PBS (without Mg2+, Ca2+), pH 7.4, 150 mM Sodium Chloride, 0.02 % Sodium Azide and 50 % Glycerol
Preservative:	Sodium azide
Precaution of Use:	This product contains sodium azide: a POISONOUS AND HAZARDOUS SUBSTANCE which should be handled by trained staff only.
Storage:	-20 °C
Storage Comment:	Store the antibody (in aliquots) at -20 °C or lower. Avoid freeze-thaw cycles.



Immunohistochemistry (Paraffin-embedded Sections)

Image 1. Human Uterus, Myometrium: Formalin-Fixed, Paraffin-Embedded (FFPE)



Western Blotting

Image 2. Western blot analysis of extracts from mouse liver cells, using PE2R2 Antibody. The lane on the right is treated with the synthesized peptide.