



Datasheet for ABIN784595

anti-Cathepsin L2 antibody (Internal Region)



[Go to Product page](#)

2 Images

Overview

Quantity:	50 µg
Target:	Cathepsin L2 (CTSL2)
Binding Specificity:	Internal Region
Reactivity:	Human
Host:	Rabbit
Clonality:	Polyclonal
Conjugate:	This Cathepsin L2 antibody is un-conjugated
Application:	Western Blotting (WB), Immunohistochemistry (Paraffin-embedded Sections) (IHC (p)), Enzyme Immunoassay (EIA)

Product Details

Immunogen:	Synthetic peptide from human CATL2. Remarks: Antigen Modification: Internal
Isotype:	IgG
Specificity:	This antibody detects endogenous levels of of fragment of activated CATL2 resulting from cleavage adjacent to Leu114.
Purification:	Immunoaffinity Chromatography

Target Details

Target:	Cathepsin L2 (CTSL2)
Alternative Name:	Cathepsin L2 (CTSL2 Products)

Target Details

Background: Cathepsin V, also known as Cathepsin L2 and Cathepsin U, is a cysteine protease of the papain family. It is expressed as a proenzyme in lysosomes, which can be autocatalytically converted to the mature form at pH 4.0. Cathepsin V is specifically expressed in the thymus, testis, and corneal epithelium. Synonyms: CATL2, CTSL2, CTSU, CTSV, Cathepsin U, Cathepsin V

Gene ID: 1515

NCBI Accession: [NP_001188504](#)

Pathways: [Toll-Like Receptors Cascades](#)

Application Details

Application Notes: Optimal working dilution should be determined by the investigator.

Restrictions: For Research Use only

Handling

Concentration: 1.0 mg/mL

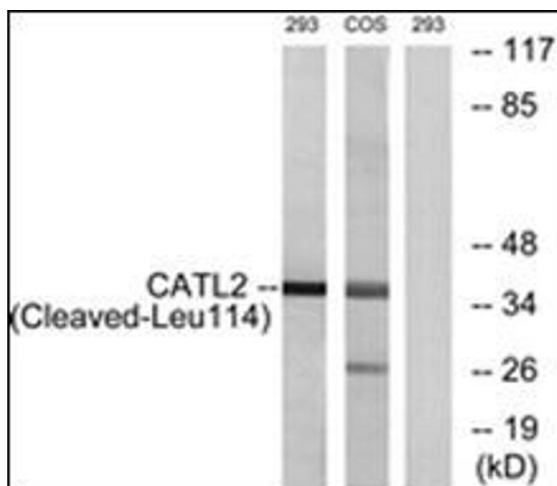
Buffer: PBS (without Mg²⁺, Ca²⁺), pH 7.4, 150 mM Sodium Chloride, 0.02 % Sodium Azide and 50 % Glycerol

Preservative: Sodium azide

Precaution of Use: This product contains sodium azide: a POISONOUS AND HAZARDOUS SUBSTANCE which should be handled by trained staff only.

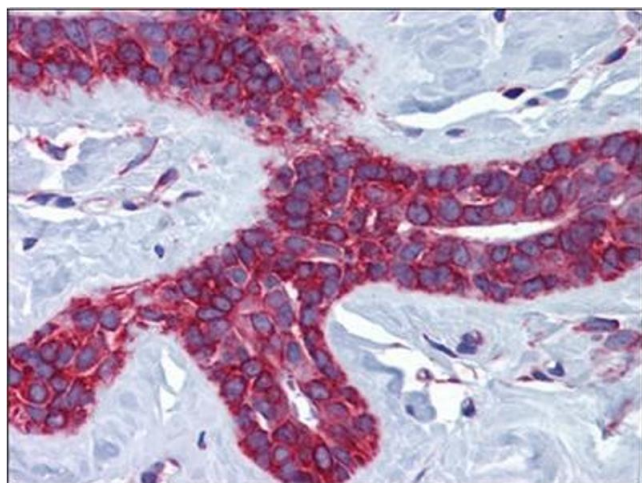
Storage: -20 °C

Storage Comment: Store the antibody (in aliquots) at -20 °C or lower. Avoid freeze-thaw cycles.



Western Blotting

Image 1. Western blot analysis of extracts from 293/COS cells, treated with etoposide 25uM 1h, using CATL2 (Cleaved-Leu114) Antibody. The lane on the right is treated with the synthesized peptide.



Immunohistochemistry (Paraffin-embedded Sections)

Image 2. Human Breast: Formalin-Fixed, Paraffin-Embedded (FFPE)