



[Go to Product page](#)

Datasheet for ABIN790293

anti-XPC antibody

2 Images

Overview

Quantity:	100 µL
Target:	XPC
Reactivity:	Human
Host:	Rabbit
Clonality:	Polyclonal
Conjugate:	This XPC antibody is un-conjugated
Application:	Western Blotting (WB), Immunohistochemistry (IHC), Immunohistochemistry (Paraffin-embedded Sections) (IHC (p))

Product Details

Brand:	IHC-plus™
Immunogen:	Synthetic peptide from human XPC. Type of Immunogen: Synthetic peptide
Isotype:	IgG
Specificity:	Peptide conjugated to a carrier protein
Purification:	Affinity purified

Target Details

Target:	XPC
Alternative Name:	XPC (XPC Products)

Target Details

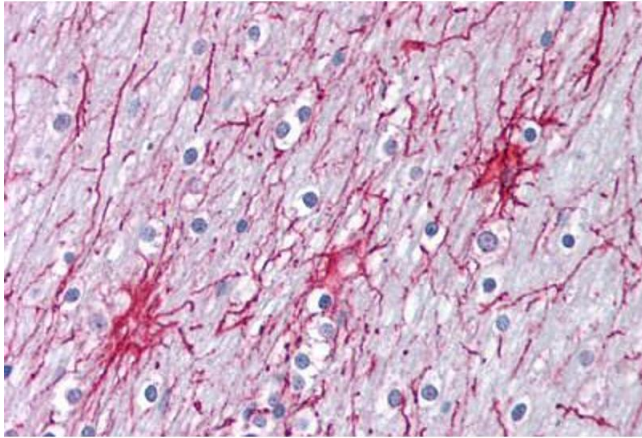
Background:	Name/Gene ID: XPC Synonyms: XPC, RAD4, XPCC, p125, XP3
Gene ID:	7508
UniProt:	Q01831
Pathways:	p53 Signaling , DNA Damage Repair

Application Details

Application Notes:	Approved: IHC, IHC-P (5 µg/mL), WB Usage: Immunohistochemistry: This antibody was validated for use in immunohistochemistry on a panel of 21 formalin-fixed, paraffin-embedded (FFPE) human tissues after heat induced antigen retrieval in pH 6.0 citrate buffer. After incubation with the primary antibody, slides were incubated with biotinylated secondary antibody, followed by alkaline phosphatase-streptavidin and chromogen. The stained slides were evaluated by a pathologist to confirm staining specificity. The optimal working concentration for this antibody was determined to be 5 µg/mL.
Comment:	Target Species of Antibody: Human
Restrictions:	For Research Use only

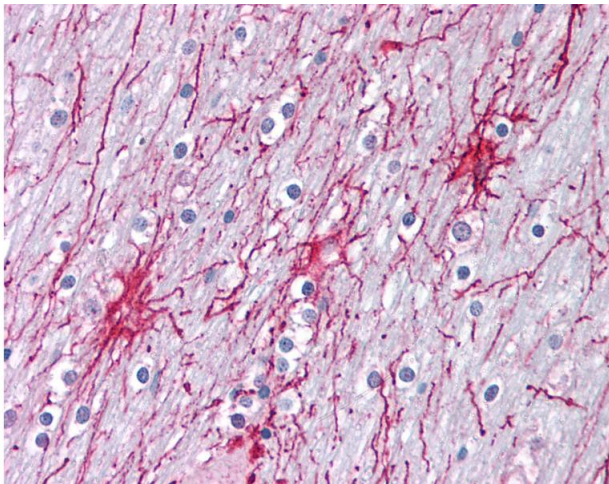
Handling

Format:	Liquid
Concentration:	Lot specific
Buffer:	PBS, pH 7.2. No preservative added.
Preservative:	Without preservative
Handling Advice:	Avoid repeat freeze-thaw cycles.
Storage:	4 °C, -20 °C
Storage Comment:	Short term: 4°C. Long term: Store at -20°C. Avoid freeze-thaw cycles.



Immunohistochemistry (Paraffin-embedded Sections)

Image 1. Human Brain, Cortex (formalin-fixed, paraffin-embedded) stained with XPC antibody ABIN790293 at 5 ug/ml followed by biotinylated goat anti-rabbit IgG secondary antibody ABIN481713, alkaline phosphatase-streptavidin and chromogen.



Immunohistochemistry

Image 2. Anti-XPC antibody IHC of human brain, cortex. Immunohistochemistry of formalin-fixed, paraffin-embedded tissue after heat-induced antigen retrieval. Antibody concentration 5 ug/ml.