



[Go to Product page](#)

Datasheet for ABIN790458  
**anti-CASQ2 antibody (AA 20-400)**

3 Images

### Overview

Quantity:	50 µg
Target:	CASQ2
Binding Specificity:	AA 20-400
Reactivity:	Human
Host:	Mouse
Clonality:	Monoclonal
Conjugate:	This CASQ2 antibody is un-conjugated
Application:	Western Blotting (WB), ELISA, Immunohistochemistry (IHC), Immunohistochemistry (Paraffin-embedded Sections) (IHC (p))

### Product Details

Brand:	IHC-plus™
Immunogen:	CASQ2 (AAH22288, 20 a.a. ~ 400 a.a) full-length recombinant protein with GST tag. MW of the GST tag alone is 26 KDa.  Type of Immunogen: Recombinant protein
Clone:	1C6
Isotype:	IgG2b kappa
Specificity:	Human Calsequestrin
Purification:	Purified from ascites by Protein A

## Target Details

---

Target:	CASQ2
Alternative Name:	CASQ2 / Calsequestrin 2 ( <a href="#">CASQ2 Products</a> )
Background:	Name/Gene ID: CASQ2  Synonyms: CASQ2, Calsequestrin-2, PDIB2, Calsequestrin 2
Gene ID:	845
UniProt:	<a href="#">O14958</a>
Pathways:	<a href="#">Negative Regulation of Transporter Activity</a>

## Application Details

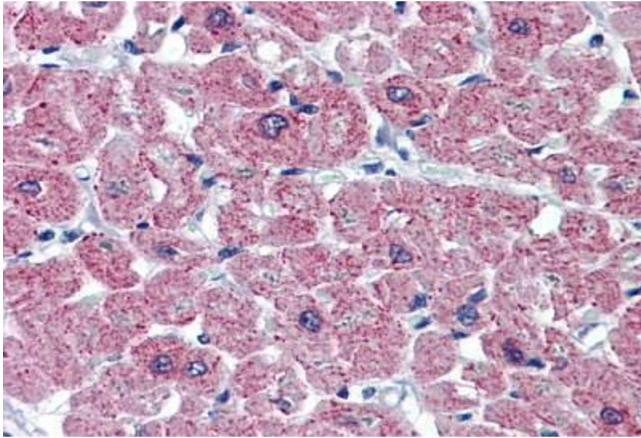
---

Application Notes:	Approved: ELISA, IHC, IHC-P (5 µg/mL), WB (1:500 - 1:1000)  Usage: Immunohistochemistry: Formalin-fixed paraffin-embedded sections. Sandwich ELISA: Recombinant protein. Western Blot: Recombinant protein.
Comment:	Target Species of Antibody: Human
Restrictions:	For Research Use only

## Handling

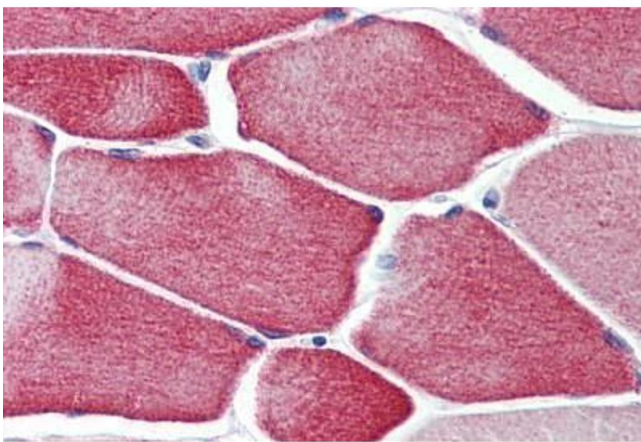
---

Format:	Liquid
Concentration:	Lot specific
Buffer:	PBS, pH 7.4
Handling Advice:	Avoid freeze-thaw cycles.
Storage:	-20 °C,-80 °C
Storage Comment:	Aliquot and store at -20°C or -80°C. Avoid freeze-thaw cycles.



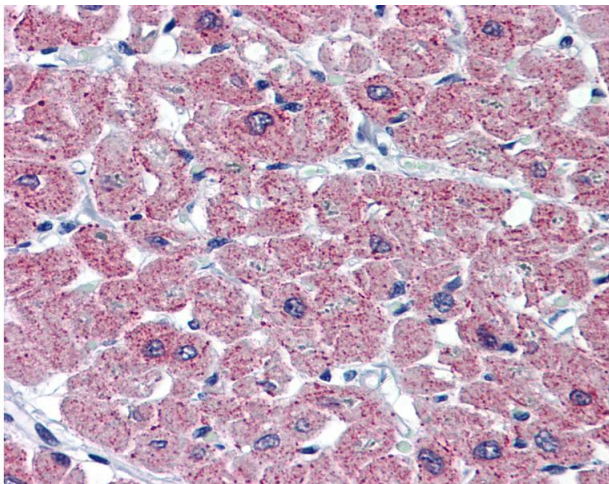
### Immunohistochemistry (Formalin-fixed Paraffin-embedded Sections)

**Image 1.** Human Heart: Formalin-Fixed, Paraffin-Embedded (FFPE)



### Immunohistochemistry (Formalin-fixed Paraffin-embedded Sections)

**Image 2.** Human Skeletal Muscle: Formalin-Fixed, Paraffin-Embedded (FFPE)



### Immunohistochemistry

**Image 3.** Anti-CASQ2 / Calsequestrin antibody IHC of human heart. Immunohistochemistry of formalin-fixed, paraffin-embedded tissue after heat-induced antigen retrieval. Antibody concentration 5 ug/ml.