



[Go to Product page](#)

Datasheet for ABIN790464
anti-CD247 antibody (AA 1-165)

3 Images

Overview

Quantity:	50 µg
Target:	CD247
Binding Specificity:	AA 1-165
Reactivity:	Human
Host:	Mouse
Clonality:	Monoclonal
Conjugate:	This CD247 antibody is un-conjugated
Application:	Western Blotting (WB), ELISA, Immunohistochemistry (IHC), Immunoprecipitation (IP), Immunohistochemistry (Paraffin-embedded Sections) (IHC (p))

Product Details

Brand:	IHC-plus™
Immunogen:	CD3Z (AAH25703, 1 a.a. ~ 165 a.a) full length recombinant protein with GST tag. MW of the GST tag alone is 26 KDa. Type of Immunogen: Recombinant protein
Clone:	4A12-F6
Isotype:	IgG1 kappa
Specificity:	Human CD247
Purification:	Purified from ascites by Protein A

Target Details

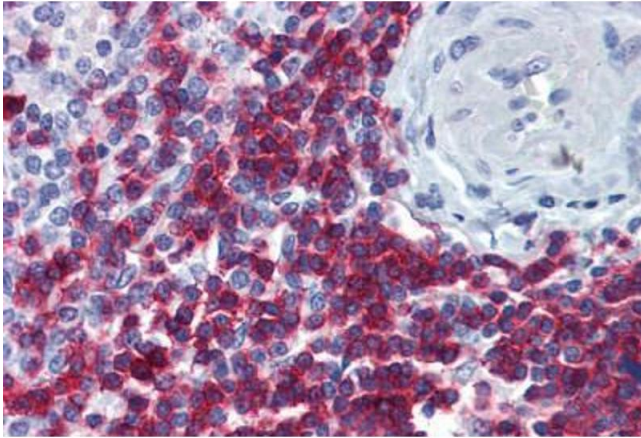
Target:	CD247
Alternative Name:	CD247 / CD3 Zeta (CD247 Products)
Background:	Name/Gene ID: CD247 Synonyms: CD247, CD3 Zeta, CD3H, CD3Z, CD247 antigen, zeta subunit, CD247 Molecule, CD3zeta chain, T3Z, TCR zeta chain, TCRZ, T-cell receptor T3 zeta chain, CD247 antigen, CD3-ZETA, CD3Q
Gene ID:	919
UniProt:	P20963
Pathways:	TCR Signaling , CXCR4-mediated Signaling Events , Ubiquitin Proteasome Pathway

Application Details

Application Notes:	Approved: ELISA, IHC, IHC-P (5 µg/mL), IP, WB (1:500 - 1:1000) Usage: Immunohistochemistry: Formalin-fixed paraffin-embedded sections. Sandwich ELISA: Recombinant protein. Western Blot: Cell lysate, Transfected lysate, Recombinant protein.
Comment:	Target Species of Antibody: Human
Restrictions:	For Research Use only

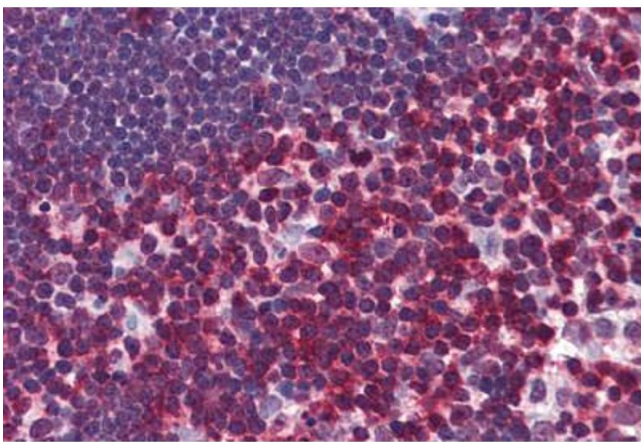
Handling

Format:	Liquid
Concentration:	Lot specific
Buffer:	PBS, pH 7.4.
Handling Advice:	Avoid freeze-thaw cycles.
Storage:	-20 °C,-80 °C
Storage Comment:	Aliquot and store at -20°C or -80°C. Avoid freeze-thaw cycles.



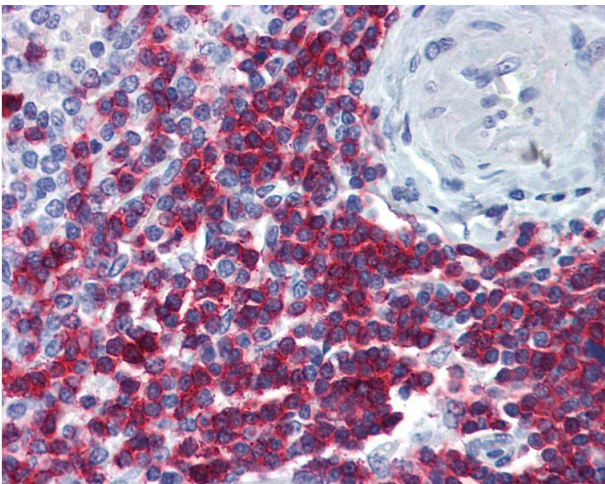
Immunohistochemistry (Formalin-fixed Paraffin-embedded Sections)

Image 1. Human Spleen: Formalin-Fixed, Paraffin-Embedded (FFPE)



Immunohistochemistry (Formalin-fixed Paraffin-embedded Sections)

Image 2. Human Thymus: Formalin-Fixed, Paraffin-Embedded (FFPE)



Immunohistochemistry

Image 3. Anti-CD247 / CD3-Zeta antibody IHC of human spleen. Immunohistochemistry of formalin-fixed, paraffin-embedded tissue after heat-induced antigen retrieval. Antibody concentration 5 ug/ml.