



[Go to Product page](#)

Datasheet for ABIN790465

anti-LI Cadherin antibody (AA 24-132)

2 Images

Overview

| | |
|----------------------|---|
| Quantity: | 50 µg |
| Target: | LI Cadherin |
| Binding Specificity: | AA 24-132 |
| Reactivity: | Human |
| Host: | Mouse |
| Clonality: | Monoclonal |
| Conjugate: | This LI Cadherin antibody is un-conjugated |
| Application: | Western Blotting (WB), ELISA, Immunohistochemistry (IHC), Immunohistochemistry (Paraffin-embedded Sections) (IHC (p)) |

Product Details

| | |
|---------------|---|
| Brand: | IHC-plus™ |
| Immunogen: | CDH17 (NP_004054, 24 a.a. ~ 132 a.a) partial recombinant protein with GST tag. MW of the GST tag alone is 26 KDa. Type of Immunogen: Recombinant protein |
| Clone: | 1H3 |
| Isotype: | IgG1 kappa |
| Specificity: | Human CDH17 |
| Purification: | Purified from ascites by Protein A |

Target Details

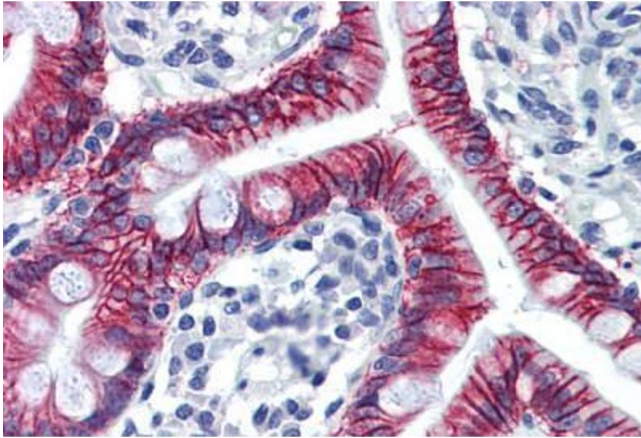
| | |
|-------------------|--|
| Target: | LI Cadherin |
| Alternative Name: | CDH17 / Cadherin 17 (LI Cadherin Products) |
| Background: | Name/Gene ID: CDH17 Family: Cadherin Synonyms: CDH17, Cadherin 16, Cadherin-16, HPT1, Human peptide transporter 1, LI cadherin, HPT-1, HPT-1 cadherin, BILL-cadherin, Cadherin, Cadherin-17, LI-cadherin, Liver-intestine cadherin |
| Gene ID: | 1015 |
| NCBI Accession: | NP_004054 |
| UniProt: | Q12864 |

Application Details

| | |
|--------------------|--|
| Application Notes: | Approved: ELISA, IHC, IHC-P (5 µg/mL), WB (1:500 - 1:1000) Usage: Immunohistochemistry: Formalin-fixed paraffin-embedded sections. Sandwich ELISA: Recombinant protein. Western Blot: Tissue lysate, Recombinant protein. |
| Comment: | Target Species of Antibody: Human |
| Restrictions: | For Research Use only |

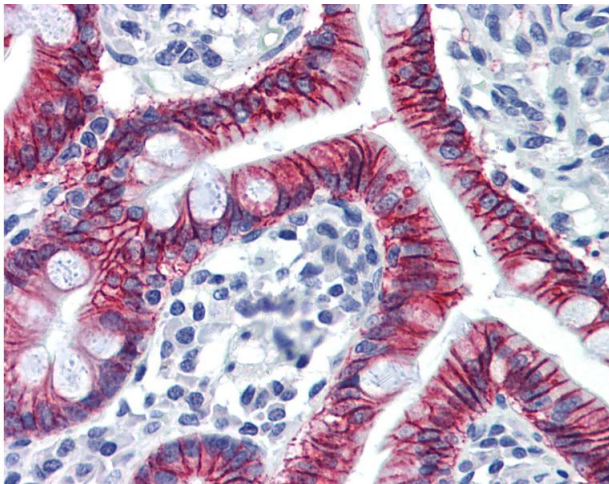
Handling

| | |
|------------------|--|
| Format: | Liquid |
| Concentration: | Lot specific |
| Buffer: | PBS, pH 7.4. |
| Handling Advice: | Avoid freeze-thaw cycles. |
| Storage: | -20 °C, -80 °C |
| Storage Comment: | Aliquot and store at -20°C or -80°C. Avoid freeze-thaw cycles. |



Immunohistochemistry (Formalin-fixed Paraffin-embedded Sections)

Image 1. Human Small Intestine: Formalin-Fixed, Paraffin-Embedded (FFPE)



Immunohistochemistry

Image 2. Anti-CDH17 / LI Cadherin antibody IHC of human small intestine. Immunohistochemistry of formalin-fixed, paraffin-embedded tissue after heat-induced antigen retrieval. Antibody concentration 5 ug/ml.