

Datasheet for ABIN790468
anti-CREB1 antibody (AA 1-342)



[Go to Product page](#)

3 Images

Overview

Quantity:	50 µg
Target:	CREB1
Binding Specificity:	AA 1-342
Reactivity:	Human
Host:	Mouse
Clonality:	Monoclonal
Conjugate:	This CREB1 antibody is un-conjugated
Application:	Western Blotting (WB), Immunohistochemistry (IHC), ELISA, Immunofluorescence (IF), Immunohistochemistry (Paraffin-embedded Sections) (IHC (p))

Product Details

Brand:	IHC-plus™
Immunogen:	CREB1 (AAH10636, 1 a.a. ~ 342 a.a) full length recombinant protein with GST tag. MW of the GST tag alone is 26 KDa. Type of Immunogen: Recombinant protein
Clone:	3F1-1B2
Isotype:	IgG1 kappa
Specificity:	Human CREB1
Purification:	Purified from ascites by Protein A

Target Details

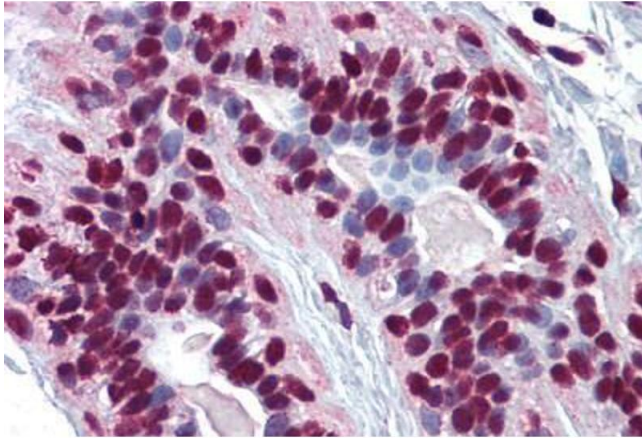
Target:	CREB1
Alternative Name:	CREB1 / CREB (CREB1 Products)
Background:	Name/Gene ID: CREB1 Family: Transcription factor Synonyms: CREB1, CREB-1, Transactivator protein, CREB
Gene ID:	1385
UniProt:	P16220
Pathways:	TLR Signaling , Fc-epsilon Receptor Signaling Pathway , EGFR Signaling Pathway , Neurotrophin Signaling Pathway , Thyroid Hormone Synthesis , Activation of Innate immune Response , Myometrial Relaxation and Contraction , Regulation of Cell Size , Toll-Like Receptors Cascades , G-protein mediated Events , Interaction of EGFR with phospholipase C-gamma , Positive Regulation of fat Cell Differentiation

Application Details

Application Notes:	Approved: ELISA, IF (10 µg/mL), IHC, IHC-P (5 µg/mL), WB (1:500 - 1:1000) Usage: Immunohistochemistry: Formalin-fixed paraffin-embedded sections. Sandwich ELISA: Recombinant protein. Western Blot: Transfected lysate, Recombinant protein.
Comment:	Target Species of Antibody: Human
Restrictions:	For Research Use only

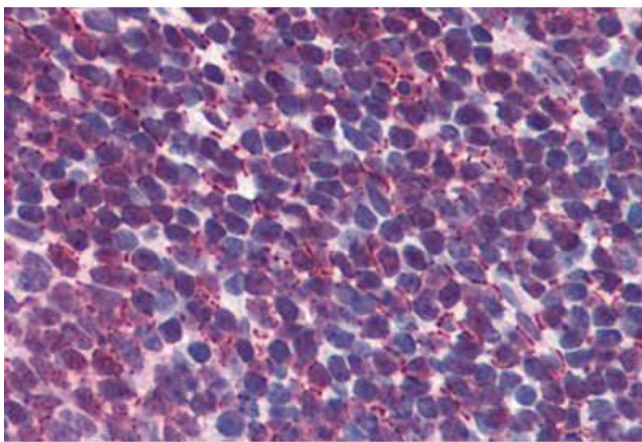
Handling

Format:	Liquid
Concentration:	Lot specific
Buffer:	PBS, pH 7.4
Handling Advice:	Avoid freeze-thaw cycles.
Storage:	-20 °C, -80 °C
Storage Comment:	Aliquot and store at -20°C or -80°C. Avoid freeze-thaw cycles.



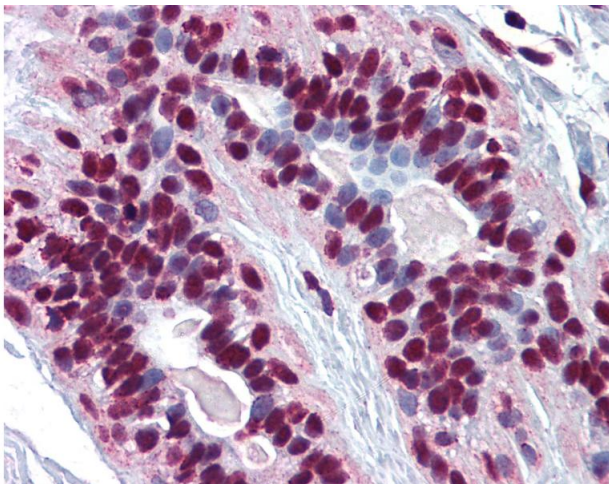
Immunohistochemistry (Formalin-fixed Paraffin-embedded Sections)

Image 1. Human Breast: Formalin-Fixed, Paraffin-Embedded (FFPE)



Immunohistochemistry (Formalin-fixed Paraffin-embedded Sections)

Image 2. Human Tonsil: Formalin-Fixed, Paraffin-Embedded (FFPE)



Immunohistochemistry

Image 3. Anti-CREB1 / CREB antibody IHC of human breast. Immunohistochemistry of formalin-fixed, paraffin-embedded tissue after heat-induced antigen retrieval. Antibody concentration 5 ug/ml.