



[Go to Product page](#)

Datasheet for ABIN790475

anti-ATF6 antibody (AA 91-194)

2 Images

Overview

Quantity:	50 µg
Target:	ATF6
Binding Specificity:	AA 91-194
Reactivity:	Human
Host:	Mouse
Clonality:	Monoclonal
Conjugate:	This ATF6 antibody is un-conjugated
Application:	Western Blotting (WB), Immunohistochemistry (IHC), ELISA, Immunohistochemistry (Paraffin-embedded Sections) (IHC (p))

Product Details

Brand:	IHC-plus™
Immunogen:	ATF6 (AAH14969, 91 a.a. ~ 194 a.a) partial recombinant protein with GST tag. MW of the GST tag alone is 26 KDa. Type of Immunogen: Recombinant protein
Clone:	3D5
Isotype:	IgG2a kappa
Specificity:	Human ATF6
Purification:	Purified from ascites by Protein A

Target Details

Target: ATF6

Alternative Name: ATF6 ([ATF6 Products](#))

Background: Name/Gene ID: ATF6

Synonyms: ATF6, ATF6-alpha, ATF6A

Gene ID: 22926

UniProt: [P18850](#)

Pathways: [ER-Nucleus Signaling](#), [Unfolded Protein Response](#)

Application Details

Application Notes: Approved: ELISA, IHC, IHC-P (10 µg/mL), WB (1:500 - 1:1000)

Usage: Immunohistochemistry: Formalin-fixed paraffin-embedded sections. Western Blot with the recombinant protein used as the immunogen.

Comment: Target Species of Antibody: Human

Restrictions: For Research Use only

Handling

Format: Liquid

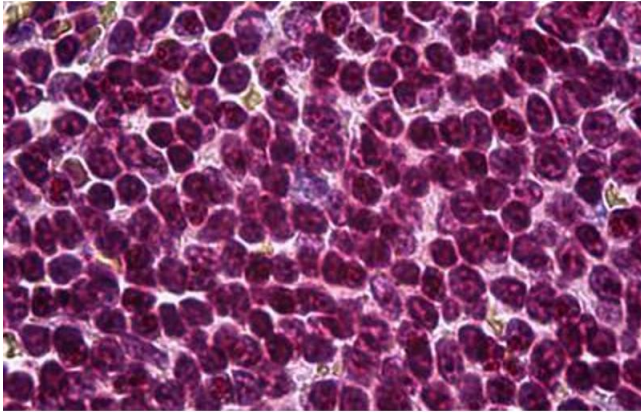
Concentration: Lot specific

Buffer: PBS, pH 7.4.

Handling Advice: avoid freeze thaw cycles.

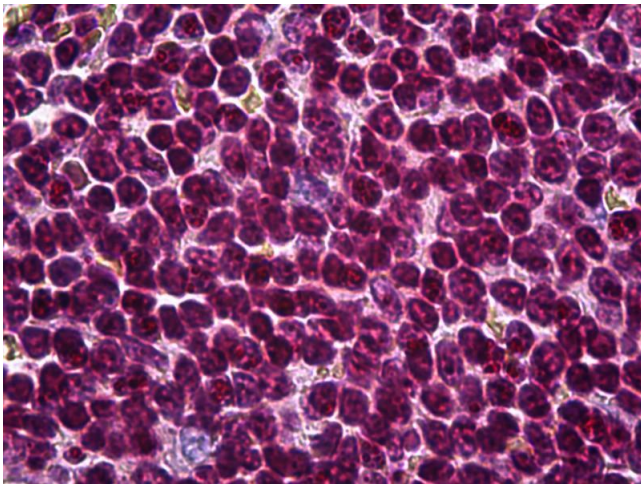
Storage: 4 °C, -20 °C

Storage Comment: Short term 4°C, long term aliquot and store at -20°C, avoid freeze-thaw cycles.



Immunohistochemistry (Formalin-fixed Paraffin-embedded Sections)

Image 1. Human Spleen: Formalin-Fixed, Paraffin-Embedded (FFPE)



Immunohistochemistry

Image 2. Anti-ATF6 antibody IHC of human spleen. Immunohistochemistry of formalin-fixed, paraffin-embedded tissue after heat-induced antigen retrieval. Antibody concentration 10 ug/ml.