



[Go to Product page](#)

Datasheet for ABIN790478

anti-ERBB3 antibody (AA 1-131)

3 Images

Overview

Quantity:	50 µg
Target:	ERBB3
Binding Specificity:	AA 1-131
Reactivity:	Human
Host:	Mouse
Clonality:	Monoclonal
Conjugate:	This ERBB3 antibody is un-conjugated
Application:	Western Blotting (WB), ELISA, Immunohistochemistry (IHC), Immunohistochemistry (Paraffin-embedded Sections) (IHC (p))

Product Details

Brand:	IHC-plus™
Immunogen:	ERBB3 (AAH02706, 1 a.a. ~ 131 a.a) partial recombinant protein with GST tag. MW of the GST tag alone is 26 KDa. Type of Immunogen: Recombinant protein
Clone:	2E9
Isotype:	IgG1 kappa
Specificity:	Human ERBB3
Purification:	Purified from ascites by Protein A

Target Details

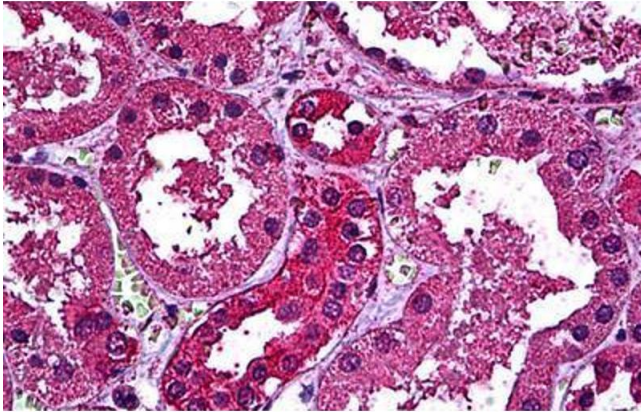
Target:	ERBB3
Alternative Name:	HER3 / ERBB3 (ERBB3 Products)
Background:	Name/Gene ID: ERBB3 Subfamily: EGF Receptor Family: Protein Kinase Synonyms: ERBB3, C-erbB-3, C-erbB3, ErbB-3, HER3, p85-sErbB3, p45-sErbB3, MDA-BF-1, ErbB3-S, LCCS2, p180-ErbB3
Gene ID:	2065
UniProt:	P21860
Pathways:	RTK Signaling , Fc-epsilon Receptor Signaling Pathway , EGFR Signaling Pathway , Neurotrophin Signaling Pathway

Application Details

Application Notes:	Approved: ELISA, IHC, IHC-P (5 µg/mL), WB (1:500 - 1:1000) Usage: Immunohistochemistry: Formalin-fixed paraffin-embedded sections. Sandwich ELISA: Recombinant protein. Western Blot with the recombinant protein used as the immunogen.
Comment:	Target Species of Antibody: Human
Restrictions:	For Research Use only

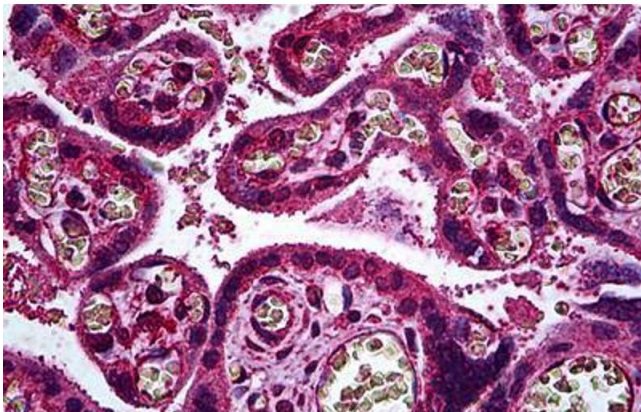
Handling

Format:	Liquid
Concentration:	Lot specific
Buffer:	PBS, pH 7.4.
Handling Advice:	avoid freeze thaw cycles.
Storage:	4 °C, -20 °C
Storage Comment:	Short term 4°C, long term aliquot and store at -20°C, avoid freeze-thaw cycles.



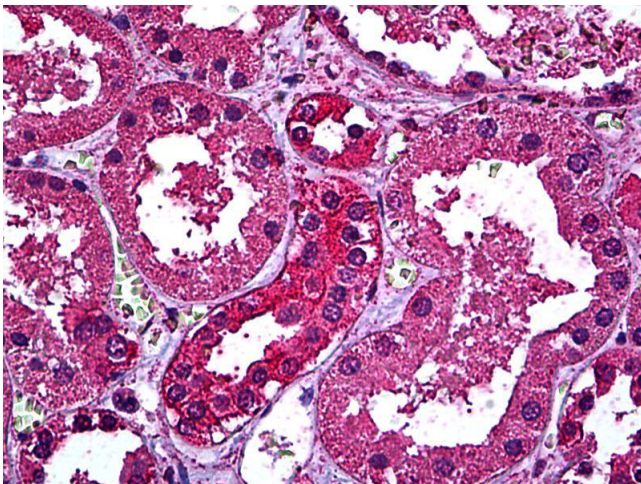
Immunohistochemistry (Formalin-fixed Paraffin-embedded Sections)

Image 1. Human Kidney: Formalin-Fixed, Paraffin-Embedded (FFPE)



Immunohistochemistry (Formalin-fixed Paraffin-embedded Sections)

Image 2. Human Placenta, Trophoblast: Formalin-Fixed, Paraffin-Embedded (FFPE)



Immunohistochemistry

Image 3. Anti-HER3 antibody IHC of human kidney. Immunohistochemistry of formalin-fixed, paraffin-embedded tissue after heat-induced antigen retrieval. Antibody concentration 5 ug/ml.