

Datasheet for ABIN790499  
**anti-PDGFRA antibody (AA 1035-1053)**



[Go to Product page](#)

2 Images

1 Publication

Overview

Quantity:	50 µL
Target:	PDGFRA
Binding Specificity:	AA 1035-1053
Reactivity:	Human, Mouse, Rat, Dog, Chicken, Cow, Monkey, Pig, Xenopus laevis, Horse, Rabbit, Bat, Hamster
Host:	Rabbit
Clonality:	Polyclonal
Conjugate:	This PDGFRA antibody is un-conjugated
Application:	Western Blotting (WB), Immunohistochemistry (IHC), Immunohistochemistry (Paraffin-embedded Sections) (IHC (p)), Immunoprecipitation (IP)

Product Details

Brand:	IHC-plus™
Immunogen:	Synthetic peptide corresponding to amino acids 1035-1053 (C-GKRRNHSSQTSEESAIETG) of human PDGF (KLH-conjugated). Receptor alpha. Percent identity by BLAST analysis: Human, Gorilla, Gibbon, Monkey, Marmoset, Mouse, Rat, Hamster, Elephant, Panda, Bovine, Bat, Dog, Horse, Rabbit, Pig, Opossum, Turkey, Chicken, Lizard, Xenopus, Pufferfish (100%), Stickleback (95%), Zebrafish (89%).  Type of Immunogen: Synthetic peptide - KLH conjugated
Isotype:	IgG

## Product Details

---

Specificity: Recognizes human PDGF Receptor Type A, doublet, Mr 150/170kD. Species Crossreactivity: mouse. Species Sequence Homology: frog, chicken and zebra fish.

---

Predicted Reactivity: Percent identity by BLAST analysis: Human, Gorilla, Gibbon, Monkey, Marmoset, Mouse, Rat, Hamster, Elephant, Panda, Bovine, Bat, Dog, Horse, Rabbit, Pig, Opossum, Turkey, Chicken, Lizard, Xenopus, Pufferfish (100%) Stickleback (95%) Zebrafish (89%).

---

Purification: Immunoaffinity purified

---

## Target Details

---

Target: PDGFRA

---

Alternative Name: PDGFRA / PDGFR Alpha ([PDGFRA Products](#))

---

Background: Name/Gene ID: PDGFRA  
Subfamily: PDGF Receptor  
Family: Protein Kinase

Synonyms: PDGFRA, CD140A, CD140a antigen, PDGFalphaR, PDGFR2, PDGFRalpha, AlphaPDGFR, RHEPDGFRA, PDGF receptor alpha, PDGFR-2, PDGFRA/BCR fusion, APDGFR, Pdgf alpha-receptor, PDGF-R-alpha, PDGFR-alpha

---

Gene ID: 5156

---

UniProt: [P16234](#)

---

Pathways: [RTK Signaling](#), [Fc-epsilon Receptor Signaling Pathway](#), [EGFR Signaling Pathway](#), [Neurotrophin Signaling Pathway](#), [Platelet-derived growth Factor Receptor Signaling](#)

---

## Application Details

---

Application Notes: Approved: IHC, IHC-P (1:100), IP, WB (1:250 - 1:1000)

Usage: Suitable for use in Western Blot and Immunoprecipitation. Western Blot: 1:250-1:1000 dilution detected PDGF Receptor a doublet (150/170kD) in 3T3/NIH cell lysate. 3T3/NIH cell lysate was resolved by electrophoresis, transferred to nitrocellulose and probed with anti-PDGF Receptor a (1:500 dilution). Proteins were visualized using a goat anti-rabbit secondary antibody conjugated to HRP and a chemiluminescence detection system. Immunoprecipitation: 5-10 µL immunoprecipitates PDGF Receptor a from 500 µg of 3T3/NIH RIPA lysate.

---

Comment: Target Species of Antibody: Human

---

## Application Details

---

Restrictions: For Research Use only

## Handling

---

Format: Liquid

Concentration: Lot specific

Buffer: 0.1 M Tris-glycine, pH 7.4, 150 mM sodium chloride, 0.05 % sodium azide.

Preservative: Sodium azide

Precaution of Use: This product contains Sodium azide: a POISONOUS AND HAZARDOUS SUBSTANCE which should be handled by trained staff only.

Handling Advice: Avoid repeat freeze-thaw cycles.

Storage: 4 °C

Storage Comment: May be stored at 4°C before opening. DO NOT FREEZE! Stable at 4°C as an undiluted liquid. Dilute only prior to immediate use.

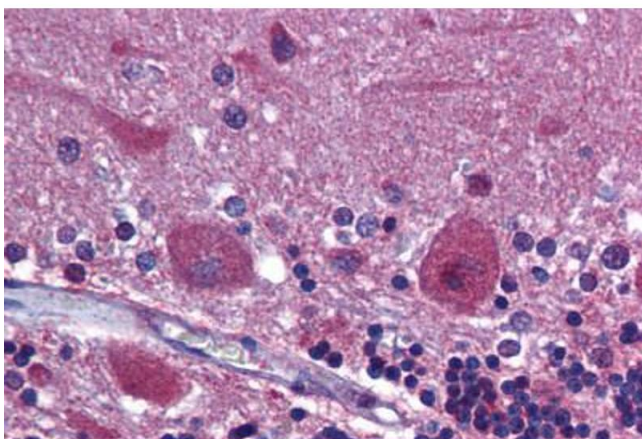
## Publications

---

Product cited in: Nance, Shi, Hakim, Wasala, Yue, Pan, Zhang, Robinson, Duan, Yao, Yang, Chen, Wagner, Gersbach, Duan: "AAV9 Edits Muscle Stem Cells in Normal and Dystrophic Adult Mice." in: **Molecular therapy : the journal of the American Society of Gene Therapy**, Vol. 27, Issue 9, pp. 1568-1585, (2019) ([PubMed](#)).

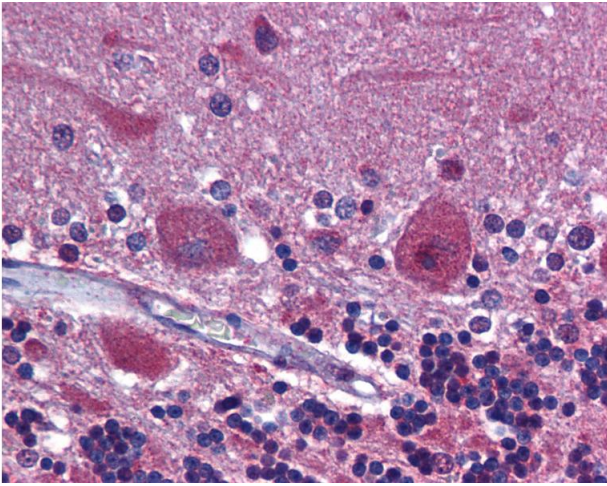
## Images

---



### Immunohistochemistry (Formalin-fixed Paraffin-embedded Sections)

**Image 1.** Human Brain, Cerebellum: Formalin-Fixed, Paraffin-Embedded (FFPE)



### Immunohistochemistry

**Image 2.** Anti-PDGFR $\alpha$  antibody IHC of human brain, cerebellum. Immunohistochemistry of formalin-fixed, paraffin-embedded tissue after heat-induced antigen retrieval. Antibody dilution 1:100.