



[Go to Product page](#)

Datasheet for ABIN790522

## anti-p300 antibody (AA 731-831)

### 2 Images

#### Overview

Quantity:	50 µg
Target:	p300 (EP300)
Binding Specificity:	AA 731-831
Reactivity:	Human
Host:	Mouse
Clonality:	Monoclonal
Conjugate:	This p300 antibody is un-conjugated
Application:	Western Blotting (WB), Immunohistochemistry (IHC), ELISA, Immunohistochemistry (Paraffin-embedded Sections) (IHC (p)), Immunofluorescence (IF)

#### Product Details

Brand:	IHC-plus™
Immunogen:	EP300 (NP_001420, 731 a.a. ~ 831 a.a) partial recombinant protein with GST tag. MW of the GST tag alone is 26 KDa.  Type of Immunogen: Recombinant protein
Clone:	1B1
Isotype:	IgG1
Specificity:	Human p300
Purification:	Purified from ascites by Protein A

## Target Details

---

Target:	p300 (EP300)
Alternative Name:	EP300 / p300 ( <a href="#">EP300 Products</a> )
Background:	Name/Gene ID: EP300  Synonyms: EP300, E1A binding protein p300, Histone acetyltransferase p300, KAT3B, p300 HAT, E1A-associated protein p300, E1A-binding protein, 300kD, p300, RSTS2
Gene ID:	2033
NCBI Accession:	<a href="#">NP_001420</a>
UniProt:	<a href="#">Q09472</a>
Pathways:	<a href="#">p53 Signaling</a> , <a href="#">Notch Signaling</a> , <a href="#">Interferon-gamma Pathway</a> , <a href="#">Intracellular Steroid Hormone Receptor Signaling Pathway</a> , <a href="#">Regulation of Intracellular Steroid Hormone Receptor Signaling</a> , <a href="#">Regulation of Lipid Metabolism by PPARalpha</a> , <a href="#">Regulation of Muscle Cell Differentiation</a> , <a href="#">Regulation of Cell Size</a>

## Application Details

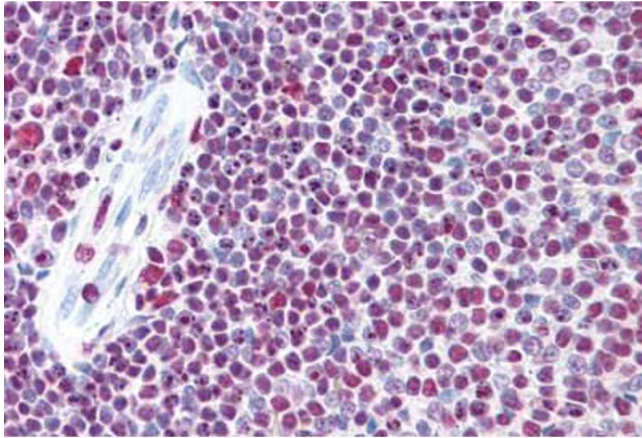
---

Application Notes:	Approved: ELISA, IF (10 µg/mL), IHC, IHC-P (5 µg/mL), WB (1:500 - 1:1000)  Usage: Immunohistochemistry: Formalin-fixed paraffin-embedded sections. Western Blot: Recombinant protein.
Comment:	Target Species of Antibody: Human
Restrictions:	For Research Use only

## Handling

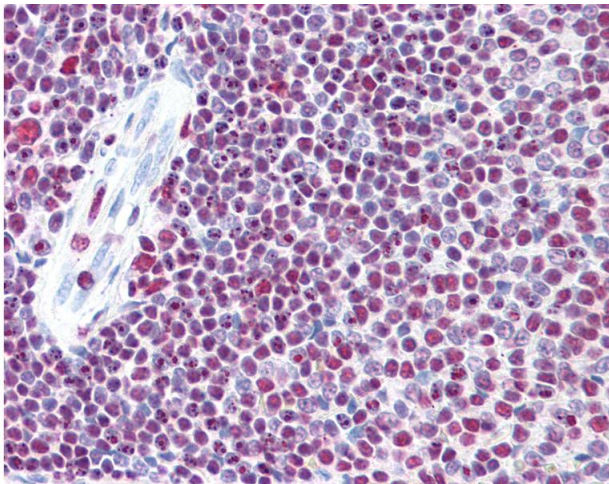
---

Format:	Liquid
Concentration:	Lot specific
Buffer:	PBS, pH 7.4
Handling Advice:	Avoid freeze-thaw cycles.
Storage:	-20 °C, -80 °C
Storage Comment:	Aliquot and store at -20°C or -80°C. Avoid freeze-thaw cycles.



### Immunohistochemistry (Formalin-fixed Paraffin-embedded Sections)

**Image 1.** Human Spleen: Formalin-Fixed, Paraffin-Embedded (FFPE)



### Immunohistochemistry

**Image 2.** Anti-EP300 / p300 antibody IHC of human spleen. Immunohistochemistry of formalin-fixed, paraffin-embedded tissue after heat-induced antigen retrieval. Antibody concentration 5 ug/ml.