

Datasheet for ABIN790546
anti-NME1 antibody (AA 43-153)



[Go to Product page](#)

2 Images

Overview

Quantity:	50 µg
Target:	NME1
Binding Specificity:	AA 43-153
Reactivity:	Human
Host:	Mouse
Clonality:	Monoclonal
Conjugate:	This NME1 antibody is un-conjugated
Application:	Western Blotting (WB), ELISA, Immunohistochemistry (IHC), Immunohistochemistry (Paraffin-embedded Sections) (IHC (p)), Immunofluorescence (IF), Immunoprecipitation (IP)

Product Details

Brand:	IHC-plus™
Immunogen:	NME1 (NP_000260, 43 a.a. ~ 153 a.a) partial recombinant protein with GST tag. MW of the GST tag alone is 26 KDa. Type of Immunogen: Recombinant protein
Clone:	1D7
Isotype:	IgG1 kappa
Specificity:	Human NME1
Purification:	Purified from ascites by Protein A

Target Details

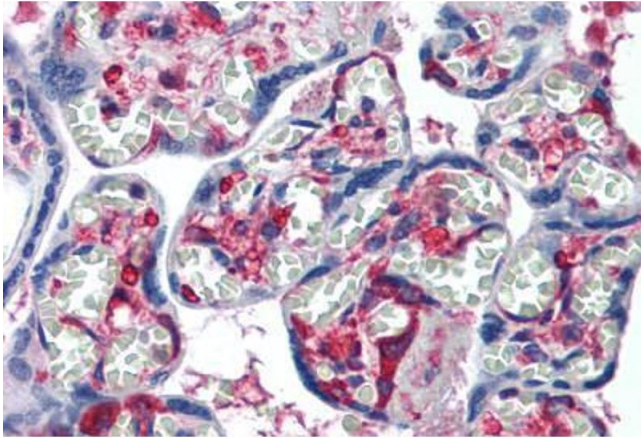
Target:	NME1
Alternative Name:	NME1 / NM23 (NME1 Products)
Background:	Name/Gene ID: NME1 Synonyms: NME1, AWD, NDKA, NB, NDK A, NM23-H1, NDP kinase A, NDPK-A, NDPKA, GAAD, Granzyme A-activated DNase, NBS, NM23
Gene ID:	4830
NCBI Accession:	NP_000260
UniProt:	P15531
Pathways:	Apoptosis , Nucleotide Phosphorylation , Carbohydrate Homeostasis , Ribonucleoside Biosynthetic Process

Application Details

Application Notes:	Approved: ELISA, IF (10 µg/mL), IHC, IHC-P (5 µg/mL), IP, WB (1:500 - 1:1000) Usage: Immunohistochemistry: Formalin-fixed paraffin-embedded sections. Sandwich ELISA: Recombinant protein. Western Blot using transfected cell lysates, cell line lysates and the recombinant protein used as the immunogen..
Comment:	Target Species of Antibody: Human
Restrictions:	For Research Use only

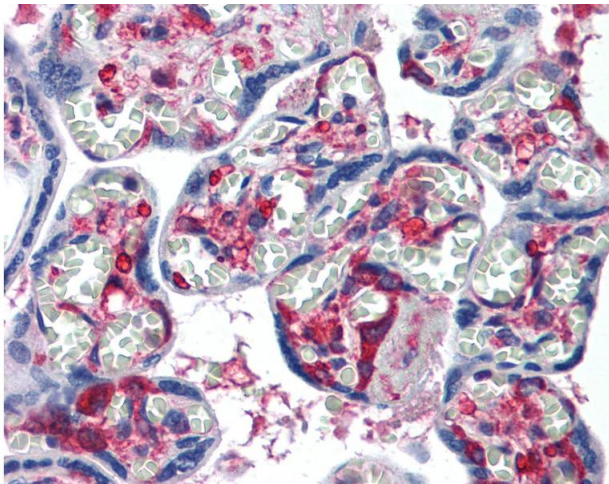
Handling

Format:	Liquid
Concentration:	Lot specific
Buffer:	PBS, pH 7.4. Sourced in Ascites.
Handling Advice:	Aliquot to Avoid repeated freezing and thawing.
Storage:	-20 °C
Storage Comment:	Store at -20°C or lower. Aliquot to avoid freeze-thaw cycles.



Immunohistochemistry (Formalin-fixed Paraffin-embedded Sections)

Image 1. Human Placenta: Formalin-Fixed, Paraffin-Embedded (FFPE)



Immunohistochemistry

Image 2. Anti-NME1 antibody IHC of human placenta. Immunohistochemistry of formalin-fixed, paraffin-embedded tissue after heat-induced antigen retrieval. Antibody concentration 5 ug/ml.