



[Go to Product page](#)

Datasheet for ABIN790612

## anti-PHAP1 antibody (AA 1-250)

### 3 Images

#### Overview

Quantity:	50 µg
Target:	PHAP1 (ANP32A)
Binding Specificity:	AA 1-250
Reactivity:	Human
Host:	Mouse
Clonality:	Monoclonal
Conjugate:	This PHAP1 antibody is un-conjugated
Application:	Western Blotting (WB), Immunohistochemistry (IHC), ELISA, Immunofluorescence (IF), Immunohistochemistry (Paraffin-embedded Sections) (IHC (p))

#### Product Details

Brand:	IHC-plus™
Immunogen:	ANP32A (AAH07200, 1 a.a. ~ 250 a.a) full length recombinant protein with GST tag. MW of the GST tag alone is 26 KDa.  Type of Immunogen: Recombinant protein
Clone:	2G11-4A5
Isotype:	IgG1 kappa
Specificity:	Human PHAP1
Purification:	Purified from ascites by Protein A

## Target Details

---

Target:	PHAP1 (ANP32A)
Alternative Name:	PHAP1 / ANP32A ( <a href="#">ANP32A Products</a> )
Background:	Name/Gene ID: ANP32A  Synonyms: ANP32A, Hepatopoietin Cn, I1PP2A, LANP, HPPCn, PHAP1, PHAPI, MAPM, PP32, C15orf1, Mapmodulin
Gene ID:	8125
UniProt:	<a href="#">P39687</a>

## Application Details

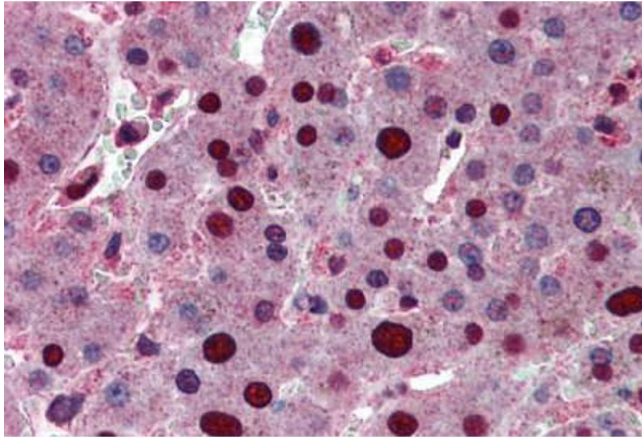
---

Application Notes:	Approved: ELISA, IF (10 µg/mL), IHC, IHC-P (5 µg/mL), WB (1:500 - 1:1000)  Usage: Immunohistochemistry: Formalin-fixed paraffin-embedded sections. Western Blot using cell line lysates and the recombinant protein used as the immunogen.
Comment:	Target Species of Antibody: Human
Restrictions:	For Research Use only

## Handling

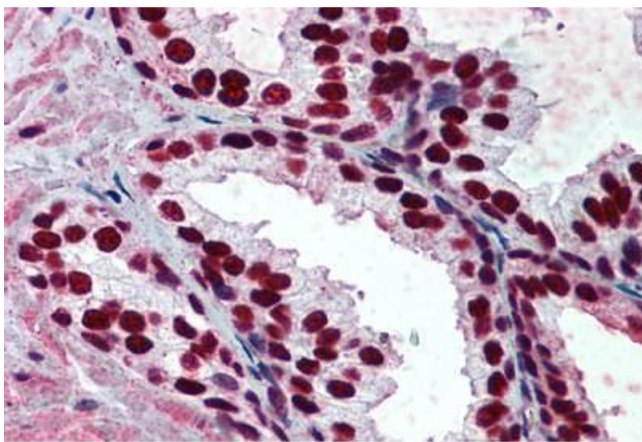
---

Format:	Liquid
Concentration:	Lot specific
Buffer:	PBS, pH 7.4
Handling Advice:	Aliquot to Avoid repeated freezing and thawing.
Storage:	-20 °C
Storage Comment:	Store at -20°C or lower. Aliquot to avoid freeze-thaw cycles.



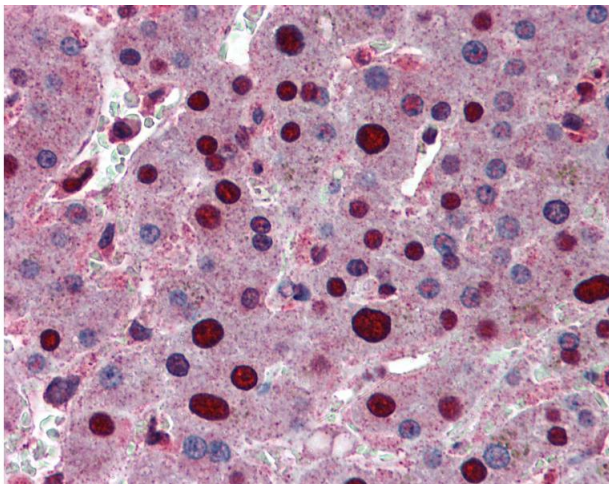
### Immunohistochemistry (Formalin-fixed Paraffin-embedded Sections)

**Image 1.** Human Liver: Formalin-Fixed, Paraffin-Embedded (FFPE)



### Immunohistochemistry (Formalin-fixed Paraffin-embedded Sections)

**Image 2.** Human Prostate: Formalin-Fixed, Paraffin-Embedded (FFPE)



### Immunohistochemistry

**Image 3.** Anti-ANP32A antibody IHC of human liver. Immunohistochemistry of formalin-fixed, paraffin-embedded tissue after heat-induced antigen retrieval. Antibody concentration 5 ug/ml.