



[Go to Product page](#)

Datasheet for ABIN790636

## anti-BAZ1B antibody (AA 1384-1484)

### 3 Images

#### Overview

Quantity:	50 µg
Target:	BAZ1B
Binding Specificity:	AA 1384-1484
Reactivity:	Human
Host:	Mouse
Clonality:	Monoclonal
Conjugate:	This BAZ1B antibody is un-conjugated
Application:	ELISA, Immunohistochemistry (IHC), Immunohistochemistry (Paraffin-embedded Sections) (IHC (p))

#### Product Details

Brand:	IHC-plus™
Immunogen:	BAZ1B (NP_075381, 1384 a.a. ~ 1484 a.a) partial recombinant protein with GST tag. MW of the GST tag alone is 26 KDa.  Type of Immunogen: Recombinant protein
Clone:	5E9
Isotype:	IgG2a kappa
Specificity:	Human BAZ1B
Purification:	Purified from ascites by Protein A

## Target Details

---

Target:	BAZ1B
Alternative Name:	BAZ1B / WSTF ( <a href="#">BAZ1B Products</a> )
Background:	Name/Gene ID: BAZ1B  Synonyms: BAZ1B, HWALp2, WBSCR10, WSTF, Transcription factor WSTF, WBSCR10, WBSCR9, Tyrosine-protein kinase BAZ1B
Gene ID:	9031
NCBI Accession:	<a href="#">NP_075381</a>
UniProt:	<a href="#">Q9UIG0</a>
Pathways:	<a href="#">Nuclear Hormone Receptor Binding</a> , <a href="#">Chromatin Binding</a>

## Application Details

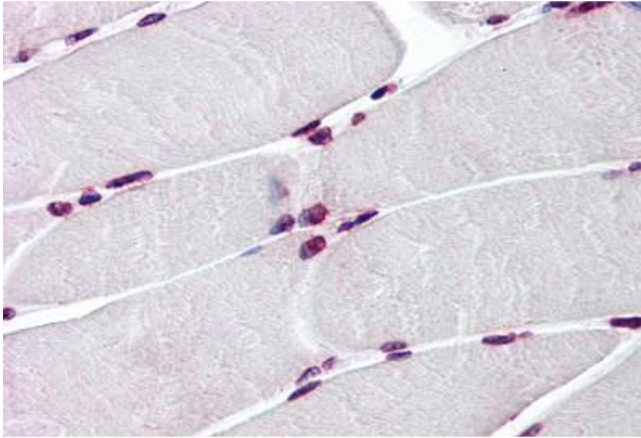
---

Application Notes:	Approved: ELISA, IHC, IHC-P (3 - 5 µg/mL)  Usage: Immunohistochemistry: Formalin-fixed paraffin-embedded sections.
Comment:	Target Species of Antibody: Human
Restrictions:	For Research Use only

## Handling

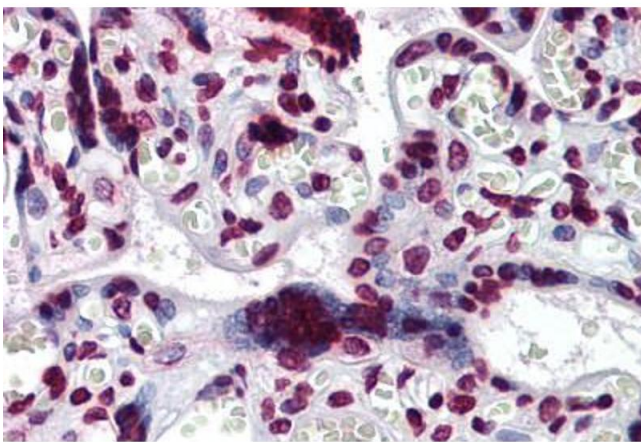
---

Format:	Liquid
Concentration:	Lot specific
Buffer:	PBS, pH 7.4
Handling Advice:	Aliquot to Avoid repeated freezing and thawing.
Storage:	-20 °C
Storage Comment:	Store at -20°C or lower. Aliquot to avoid freeze-thaw cycles.



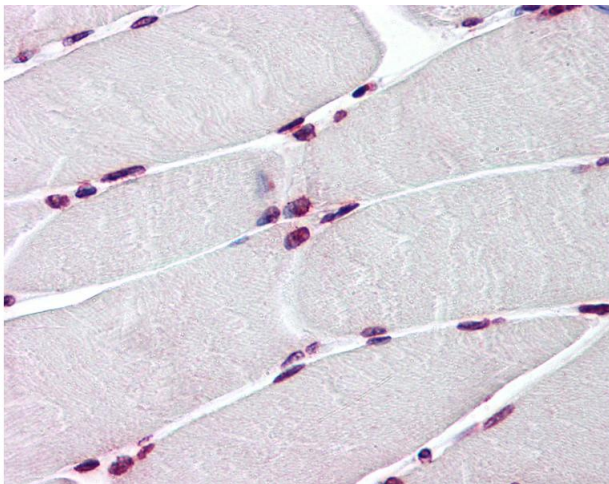
**Immunohistochemistry (Formalin-fixed Paraffin-embedded Sections)**

**Image 1.** Human Skeletal Muscle: Formalin-Fixed, Paraffin-Embedded (FFPE)



**Immunohistochemistry (Formalin-fixed Paraffin-embedded Sections)**

**Image 2.** Human Placenta: Formalin-Fixed, Paraffin-Embedded (FFPE)



**Immunohistochemistry**

**Image 3.** Anti-BAZ1B / WSTF antibody IHC of human skeletal muscle. Immunohistochemistry of formalin-fixed, paraffin-embedded tissue after heat-induced antigen retrieval. Antibody concentration 3 ug/ml.