



[Go to Product page](#)

Datasheet for ABIN790667

anti-CLEC2D antibody (AA 1-155)

2 Images

Overview

Quantity:	50 µg
Target:	CLEC2D
Binding Specificity:	AA 1-155
Reactivity:	Human
Host:	Mouse
Clonality:	Monoclonal
Conjugate:	This CLEC2D antibody is un-conjugated
Application:	ELISA, Western Blotting (WB), Immunohistochemistry (IHC), Immunohistochemistry (Paraffin-embedded Sections) (IHC (p))

Product Details

Brand:	IHC-plus™
Immunogen:	CLEC2D (AAH19883, 1 a.a. ~ 155 a.a) full length recombinant protein with GST tag. MW of the GST tag alone is 26 KDa. Type of Immunogen: Recombinant protein
Clone:	4C7
Isotype:	IgG1 kappa
Specificity:	Human CLEC2D
Purification:	Purified from ascites by Protein A

Target Details

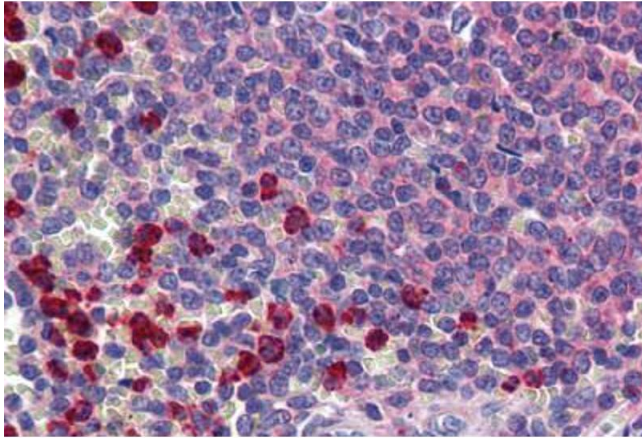
Target:	CLEC2D
Alternative Name:	CLEC2D / OCIL / LLT1 (CLEC2D Products)
Background:	Name/Gene ID: CLEC2D Synonyms: CLEC2D, C-type lectin related f, CLAX, LLT-1, LLT1, OCIL, Osteoclast inhibitory lectin, Lectin-like NK cell receptor, Lectin-like transcript 1
Gene ID:	29121
UniProt:	Q9UHP7
Pathways:	Regulation of Leukocyte Mediated Immunity

Application Details

Application Notes:	Approved: ELISA, IHC, IHC-P (3 - 5 µg/mL), WB (1:500 - 1:1000) Usage: Immunohistochemistry: Formalin-fixed paraffin-embedded sections. Western Blot using transfected cell lysates and the recombinant protein used as the immunogen.
Comment:	Target Species of Antibody: Human
Restrictions:	For Research Use only

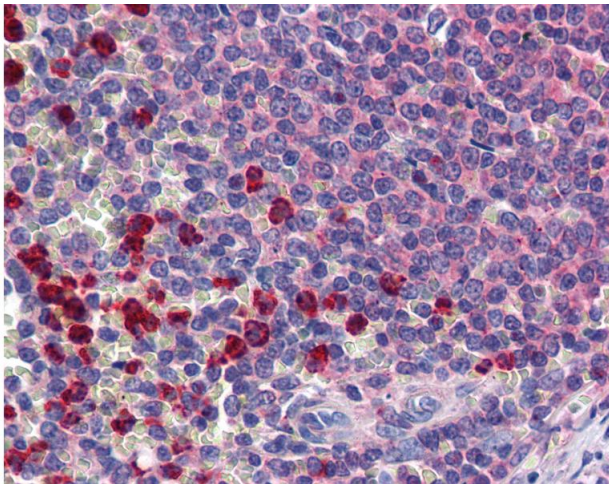
Handling

Format:	Liquid
Concentration:	Lot specific
Buffer:	PBS, pH 7.4.
Handling Advice:	Aliquot to Avoid repeated freezing and thawing.
Storage:	-20 °C
Storage Comment:	Store at -20°C or lower. Aliquot to avoid freeze-thaw cycles.



Immunohistochemistry (Formalin-fixed Paraffin-embedded Sections)

Image 1. Human Spleen: Formalin-Fixed, Paraffin-Embedded (FFPE)



Immunohistochemistry

Image 2. Anti-CLEC2D antibody IHC of human spleen. Immunohistochemistry of formalin-fixed, paraffin-embedded tissue after heat-induced antigen retrieval. Antibody concentration 3 ug/ml.