

Datasheet for ABIN790676

anti-Glutamate Receptor 3 antibody (N-Term)**2** Images[Go to Product page](#)

Overview

Quantity:	50 µg
Target:	Glutamate Receptor 3 (GRIA3)
Binding Specificity:	N-Term
Reactivity:	Human, Rat
Host:	Mouse
Clonality:	Monoclonal
Conjugate:	This Glutamate Receptor 3 antibody is un-conjugated
Application:	Western Blotting (WB), Immunohistochemistry (IHC), Immunofluorescence (IF), Immunohistochemistry (Paraffin-embedded Sections) (IHC (p)), Immunocytochemistry (ICC)

Product Details

Brand:	IHC-plus™
Immunogen:	Fusion protein encompassing the N-terminal region of rat GluR3. Type of Immunogen: Fusion protein
Isotype:	IgG1
Specificity:	Recognizes the ~98kD Glutamate Receptor 3 (GluR3), and demonstrates no reactivity with cells transfected with GluR1, GluR2, or GluR4. Reactivity has been confirmed with HEK293 cells transfected with AMPA GluR cDNAs as well as human, rat, and macaque monkey brain extracts by Western Blot and rat hippocampus by immunofluorescence, immunocytochemistry, and immunogold labeling/electron microscopy.

Product Details

Purification: Protein A purified

Target Details

Target: Glutamate Receptor 3 (GRIA3)

Alternative Name: GRIA3 / GLUR3 ([GRIA3 Products](#))

Background: Name/Gene ID: GRIA3
Subfamily: Glutamate receptor - ionotropic (NMDA receptor)
Family: Ion Channel

Synonyms: GRIA3, AMPA 3, Glutamate receptor 3, Glutamate receptor C, GLUR-C, GLUR3, GLURC, Glutamate receptor subunit 3, DJ1171F9.1, GluA3, GluR-3, GLUR-K3, MRX94

Gene ID: 2892

UniProt: [P42263](#)

Pathways: [PI3K-Akt Signaling](#), [cAMP Metabolic Process](#), [Synaptic Membrane](#)

Application Details

Application Notes: Approved: ICC (1 - 3 µg/mL), IF (1 - 3 µg/mL), IHC, IHC-P (20 µg/mL), WB (5 µg/mL)

Usage: Suitable for use in Western Blot, Immunocytochemistry, Immunohistochemistry (human FFPE), Immunofluorescence and Electron Microscopy. Recommended Dilution: Western Blot: 5 µg/mL. Immunocytochemistry: 1-3 µg/mL. Immunofluorescence with rat brains: 1-3 µg/mL. Immunogold labeling/Electron Microscopy: 1-3 µg/mL.

Comment: Target Species of Antibody: Rat

Restrictions: For Research Use only

Handling

Format: Liquid

Concentration: Lot specific

Buffer: PBS, pH 7.4, 0.1 % sodium azide.

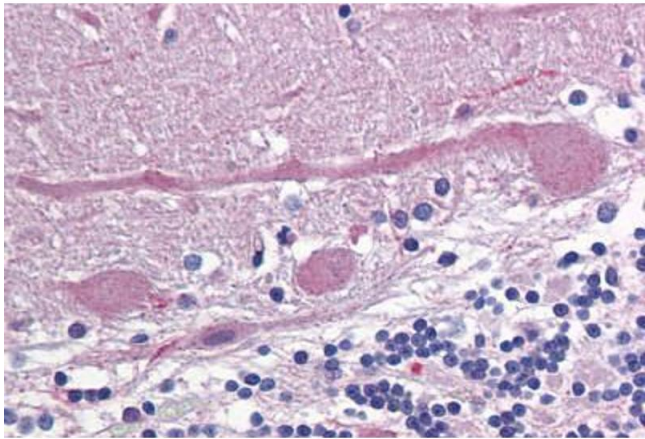
Preservative: Sodium azide

Precaution of Use: This product contains Sodium azide: a POISONOUS AND HAZARDOUS SUBSTANCE which

Handling

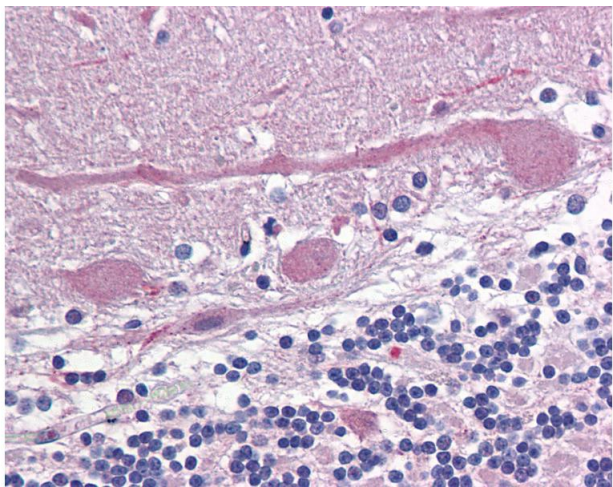
	should be handled by trained staff only.
Handling Advice:	avoid freeze thaw cycles.
Storage:	4 °C,-20 °C
Storage Comment:	Short term 4°C, long term aliquot and store at -20°C, avoid freeze-thaw cycles.

Images



Immunohistochemistry (Formalin-fixed Paraffin-embedded Sections)

Image 1. Human Brain, Cerebellum: Formalin-Fixed, Paraffin-Embedded (FFPE)



Immunohistochemistry

Image 2. Anti-GRIA3 / GLUR3 antibody IHC of human brain, cerebellum. Immunohistochemistry of formalin-fixed, paraffin-embedded tissue after heat-induced antigen retrieval. Antibody concentration 20 ug/ml.